

# Clearstory

Networking since 1979

## Letter from our President

AUID experienced another educational and fun conference this year at The Ohio State University campus in Columbus, Ohio. The conference was well attended with roughly half of the membership taking advantage of the educational and peer networking opportunity. As you will see in these newsletter articles we visited a range of venues, spoke with end users to hear what worked and what they would do differently, interacted with very informative speakers, and enjoyed the fun factor with our Germantown visit. This conference saw the first time a manufacturer/vendor show that by all accounts was a huge success! Thank you to this year's AUID Committee Members at OSU, Carlos Lugo, Denise

Beard, Joyce Strait, Lynnetta Knotts and their OSU staff for all of their hard work and time commitment in continuing the AUID tradition of producing a quality conference!

When you read the already distributed conference meeting minutes you will see what the board has been working on and accomplishing this year. Thank you to all the board and committee members for their work, dedication, time and creativity. Good ideas suggested for the benefit of the organization will be addressed throughout the coming year to grow membership, continue to increase national recognition, and to enhance our website. The board concluded the enhancement of the website would be time intensive

and best served by hiring a web master. Cindy Howe, current past president, volunteered to research companies that provide that service.

AUID had a good year and a good conference in 2008. Next year is our 30 year anniversary and the conference is being held at one of the founding institutions of the organization, Michigan State University. I look forward to seeing you all there for another great conference.

Anne Adesso

AUID President

Cornell University



How do you spell OHIO?

### Inside this issue:

1st Ever Product Exposition	2
Campus Tours — ZERO EMISSIONS	3
Value of having Interior Designers on staff	7
Design Competition Results	8
2009 Conference— Save the date	12



## National Conference 2008 at the Ohio State

Highlights are inside this issue of the Clearstory. Events included the first ever Opening Night Product Exposition at the Blackwell Hotel Ballroom on the Ohio State's campus, tours of the Archer House living quarters, Knowlton School of Architecture, the Ohio 4-H Center (first newly constructed LEED project on campus),

the Value City Arena at the Jerome Schottenstein Center, the Woody Hayes Athletic Center, the Longaberger Alumni House, the Ohio Stadium suites, the Recreation & Physical Activity Center, the William H. Hall Student Resident Complex and the Market-Place at Neil. Our special tours included an Andy Warhol Exhibit at the Wex-

ner Center for the Arts and a Chihuly Glassworks Exhibit & Collection at the Franklin Park Conservatory. The keynote speakers were **Bernie Costantino**, University Architect-OSU, **Aparna Dial**, Director of Energy & Sustainability-OSU and **Denise Guerin**, Ph.D, FIDEC, ASID, IIDA Morse-Alumni Distinguished Professor, Interior

### 2008 Conference Opening Night and 1st ever Product Exposition



AUID Conference Attendees had the chance to view over 20 product booths with new and exciting furniture or finish materials specialized to the higher education market. While moving from booth to booth, each attendee had a BINGO card to fill up with stamps from the vendors and at the end of the evening there were door prizes drawn from all the completed BINGO cards. A Spinneybeck bag and Herman Miller chair were the coveted door prizes.

Vendors included many manufacturers of products that University Interior Designers already know and

specify like Allermuir, Spinneybeck, Transformations Furniture, Carnegie Textiles, Forbo, Allsteel, OM Workspace, Coral Fabrics, InterfaceFLOR, Foliot, Sherwin-Williams, Mechoshade, Constatine Carpets, MTS Seating, Blueridge Carpets, KI International, Haworth, E & I Cooperative and Herman Miller.

Attendees who were tired from traveling all day got the opportunity to relax with old friends while enjoying appetizers and refreshments or sign up for 10 minute chair massages. This was a HUGE hit and probably could have kept three masseuse's busy

all night!

The Ohio State hosts had this year's Design Competition submittals on display for all to view and compare notes but we had to wait until Wednesday night to see the results.

As conference opening nights go, this one was not to much different but everyone agreed that having the product exposition geared towards the higher education market was almost as good as going to NEOCON!





## 2008 Conference – Tours of Campus – ZERO CARBON EMISSIONS!

After our kick off welcome and inspirational message by **Bernie Costantino**, University Architect to “Do Something Great” the attendees enjoyed tipping the chairs over and touring the Archer House. This building was originally constructed as a resident hall but turned into offices then in 2007 transformed back into upper-class undergraduate living quarters once again.

From there we walked to the **Knowlton School of Architecture** led by Scott Conlon. The interior is a mix of concrete and glass with circulation via a ramp system, home to 42 classic designed furniture pieces and a small rooftop garden.

Our lunchtime destination was the spectacular newly constructed first LEED building on campus, the **Ohio 4-**

**H Center**. After a brief tour detailing this facility’s green features—a geothermal HVAC system, a reflective roof and use of many recycled or sustainable materials, we were invited to lunch on the terrace and innovation room. Our lunchtime speaker, **Aparna Dial**, Director of Energy & Sustainability gave attendees many reasons why we should choose sustainable in our designs. Design professionals need to switch from focusing on the first cost to a product/materials life cycle cost. Ask yourself—how long can a particular product specified last?

No tour of OSU would be complete without a visit to their athletic facilities. AUID was lucky enough to tour the largest Big Ten arena—the **Value City Arena at the Jerome Schottenstein Cen-**

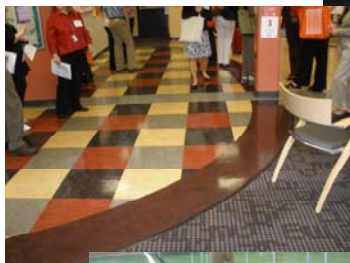
**ter**. This arena seats 17,500 for hockey, 19,500 for basketball and 21,000 for concerts. Over \$40 M of the \$116 M multipurpose facilities costs came from naming rights, 4,500 personal seat licenses and leases for the 52 luxury box seats. Nationwide Insurance contributed \$1.5M towards the venue’s extraordinary terrazzo floors.

Our last campus stop of the day was the **Woody Hayes Athletic Center**. AUID co-hart, **Joyce Strait**, led our tour which included the new home of the 2002 National Championship trophy, as well as trophies from past Rose and Sugar Bowl games. The lobby displays all the Heisman trophies won by past Ohio State Buckeye football players including Archie Griffin and Eddie George.



One of the Schottenstein Center’s extraordinary terrazzo floors

**What 1961  
National Golf  
Champion knew  
from the age of  
six that he  
wanted to go to  
Ohio State?**



Our Archer House tour guides



Vote for your favorite Brutus Buckeye:

1



2



Hint: One of these three is really a Spartan—boo hiss!

3



TOURS & SHOPPING AT VALUE CITY ARENA at the JEROME SCHOTTENSTEIN CENTER



What Interior Designer isn't always searching for just the right thing or that great deal? While at the Schottenstein Center, we had time to find some real bargains at the OSU Store!



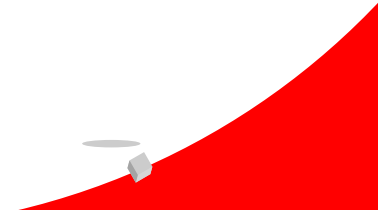




Can you name the columns outside Knowlton School of Architecture?



Value City Arena Suites & Lounges



### 2008 Conference – Recreation and Resident Hall Facilities

After a wonderful dinner & design competition awards at the Longaberger Alumni House on Wednesday night, AUID Conference attendees were ready for some walking and stretching. Our Ohio State hosts started our campus tour at one of the most recognized landmarks in college sports...Ohio Stadium! Located on the banks of the Olentangy River, it was built in 1922 and is listed in the National Registry of Historic places. Prior to the 1999 renovation, there were

living quarters underneath the stadium seats and the residents worked in the stadium to pay for a portion of their housing costs. In addition to touring the suites, AUID got to go on the sacred football turf and inside the HUGE pressbox!!

After leaving the 102,329 seat stadium the group walked across to the Recreation & Physical Activity Center. It houses an aquatic pavilion, racquetball courts, 4-lane running track, 4-court

gymnasium, a simulated golf room, the Courtside Café, multipurpose meeting rooms, a demonstration kitchen and over 20,000 square feet of cardio and fitness equipment. By late afternoon, the group was ready for some coffee at the MarketPlace at Neil which is housed in the William H. Hall Student Residential Complex. This four building complex includes two apartment style buildings for upper-class and graduate students and two scholar's houses for living/learning



Which new AUID member was in a design competition picture last year as a student employee?



What river runs through OSU's Campus?



**2008 Conference - Health, Safety and Welfare: What is it really?**

Guest speaker — Denise A. Guerin, Ph.D, FIDEC, ASID, IIDA Morse-Alumni Distinguished Professor - Interior Design, Department of Design, Housing & Apparel, University of Minnesota; gave us an inspiring message regarding the value of having Interior Designers on our university's staff. First, we have been educated, we have the experience and we demonstrate our ability to prevent harm from coming to people in the way we design an environment on campus. Interior Designers use their specialized knowledge to specify furniture & products that prevent harm and protect people's health. As Interior Designers, we must not only design well, we must be able to talk and educate people about their health, safety and welfare. Interior Designers can significantly reduce greenhouse emissions and dependence while improving the health and productivity of the building's occupants. Green buildings are healthier and more comfortable, improve energy efficiency and indoor environmental quality while providing their occupants a healthier place to live, work and play. Harm is prevented by planning interior spaces to afford safe exiting and egress that comply with codes, allowing people to escape during a fire emergency, thus providing for their safety. People's welfare is protected by Interior Designers' knowledge of human social, psychological, and physical needs to design spaces that are benign, supportive and healing. *We have to know all cultures, all ages and what makes them comfortable.*

*“Interior Designers practice prevention through thoughtful design”  
- Denise Guerin*

**Andy Warhol Exhibit at the Wexner Center for the Arts**

The Wexner Center for the Arts hosts gallery art exhibits, performances, film screenings and public programming and is the only American exhibit for “Andy Warhol: Other Voices, Other Rooms” which filled four galleries with 700 films, videos, paintings and prints by the celebrated pop artist. Our OSU hosts knew this stop would be a memorable and relaxing end to our busy day on campus!



**Tour – Franklin Park Conservatory including Chihuly Glasswork**

The Franklin Park Conservatory features several attractions. There are more than 400 species of plants, huge model railroad track on display as well as a fabulous glass art collection and a perfect location for the AUID 2008 Conference final day's lunch!



2008 Design Competition Awards

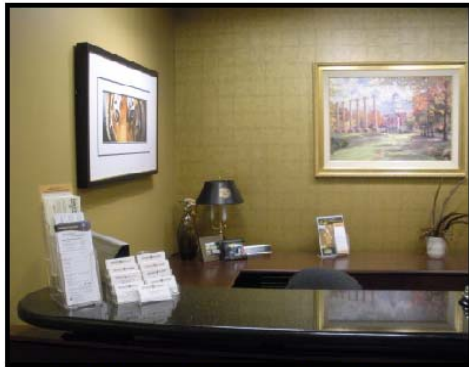
**RENOVATIONS UNDER \$50,000 (four entries)**

1st Place—Cyndi Curnette, University of Missouri—Columbia; Reynolds Alumni Center

2nd Place—Amparu Barrera, CUNY—Kiely Hall, room 200

3rd Place—Cyndi Curnette, University of Missouri-Columbia

Cornell Hall, Trulaske College of Business



1st Place - Renovation Project under \$50,000



**2008 AUID Design Competition**

*Project Information:*  
 Category: Renovation - under \$50,000  
 Name of Space: Reynolds Alumni Center - Alumni Association Office Lobby  
 Use: Administration and staff offices for Alumni  
 Design Intent: Provide a warm and welcoming entrance to the alumni offices. Integrate school colors, showcase historical memorabilia and provide additional concealed storage for event materials.  
 Square Footage: 226 sf  
 Percent of University Designer's Involvement: 100%

**Project Statement:**  
 The Alumni Association wanted to create a warm, welcoming and nostalgic space for alumni to visit. The existing space had previously been a meeting room and had become the lobby/reception area by utilizing the space the best they could with existing systems furniture.  
 We created a layout that placed the support staff in a prominent location, but not in front of the door. The existing location caused traffic flow problems for staff entering the space if a patron was at the reception desk. The new location would also provide additional space for storage of event items that frequently would fill the area behind the reception desk, making the area look distracting to visitors.  
 A bust of the Alumni's founding father, Oden Gutar is highlighted in the corner with the guest waiting seats. Now alumni can recognize his contributions that he and his faculty have made to the campus and community. The existing guest waiting chairs were utilized to keep the project within budget, but will in the future be reupholstered in a tiger print. Track lighting has been installed to help highlight some of the prized donations and artwork from alumni. Warm gold hues were used to brighten the space in the carpet, paint and vinyl walkcovering. A black granite transaction top of the reception desk was a new addition to the reception desk that just received replacement panels to the existing system furniture.  
 Items including lamps and artwork are some of the items displayed in this space that alumni can purchase. The space has been transformed with this renovation work.

JUDGES COMMENTS: Minimal costs but a large impact. Space is welcoming.

**SPECIALTY CONSTRUCTION (six entries)**

1st Place—Laurie Brubaker, Michigan State University—Hubbard Public Bathrooms

2nd Place—Christine Lockwood, Michigan State University—Munn Ice Arena

3rd Place—Elenora Philopoulus, Western Michigan University

Resident Hall Lobby & Corridor



2008 Design Competition Awards

**RENOVATIONS \$50,000—\$150,000 (eight entries)**

1st Place—Elenora Philopoulos, Western Michigan University—Student Recreation Center

2nd Place—Sheri Harper, Western Michigan University—Schneider Hall, Student Lounge

3rd Place—Elsbeth Brown, Oklahoma State University—Leadership Lounge

**2008 AUID DESIGN COMPETITION**

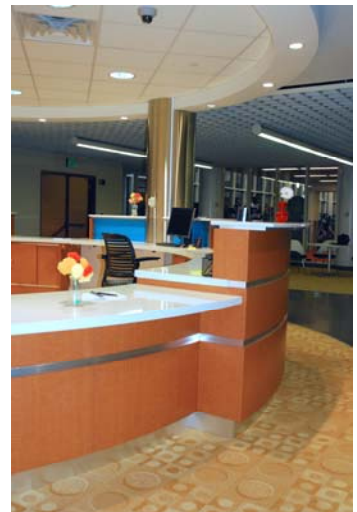
**Project Information**

**Category:** Renovation—\$50,000 - \$150,000  
**Name of Space:** Student Recreational Center  
**Use:** Service Desk and Student Lounge  
**Design Intent:** To create a new service desk that would give a professional and 'stream line' look with a new lounge area for students to enjoy.  
**Square Footage:** Approx. 1,650 sq. ft.  
**Percent of University Designer's Involvement:** 100% The design concept, custom millwork design, construction documents and project management were all performed in-house.

**Project Statement:**  
 Prior to the remodel, the space was unprofessional, outdated, underutilized and in general did not function or satisfy the needs of the department. A newly designed space was desperately needed so that to define the area with professionalism as well as entice students to use the space to its fullest potential.

- Project requirements for the remodel were as follows:
1. Space planning for the desk and lounge area so that to accommodate 4 merging circulation paths.
  2. Design a new functioning service desk that would state professionalism with a 'wow' effect.
  3. Several special requirements for the service desk were needed, such as: a versatile space beneath the work surface for mobile athletic gear, a cash register, 3 computers, 2 lighted display cases with storage, mobile storage units, ADA access, a separate door entrance, security camera reconfigurations, 11" tack board, and a vending machine location.
  4. Service desk lighting was poorly lit before and required new lighting that would accentuate the space.
  5. New carpeting and new rubber flooring patching.

This service/lounge area is centrally located in the building where multiple circulation paths merge. The challenge was to create a smooth traffic flow that would allow the building users to move freely in all directions and yet attract them to the service desk or the lounge. This was achieved by having the circular service desk with a standing zone separate from the main walk areas and a serpentine shaped carpeted seating area to complement the service desk layout. The geometric shapes used both in the design layout and in the selected materials were intended to 'extend' from the existing architectural features prominent in the building.



**JUDGES COMMENTS:** Space is lively, youthful, modern and playful. High tech as well as highly textural.

2008 Design Competition Awards

**RENOVATIONS OVER \$150,000 (six entries)**

1st Place—Sheri Harper, Western Michigan University—College of Business Career Center

2nd Place—Linda Louma, Michigan State University—Union Food Court

3rd Place—Amparo Barrera, CUNY—Campbell Dome

**Category:** Renovation over \$150,000

**Name of Space:** College of Business Career Center

**Use:** Career Center – Interview rooms, Office, Reception

**Design Intent:** To create an area that would appeal to both students and employers. To provide a space that would give the students a chance to visually leave the academic world and step into the corporate arena as well as creating a space where employers would enjoy spending a day interviewing students for potential job opportunities within their corporation.

**Percent of University Designer’s Involvement:** 100%. This was an in-house project. It was a collaborative effort between my design Interns and me. This project could not have been done without their invaluable help.

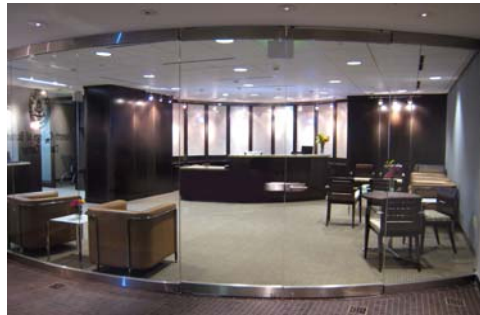
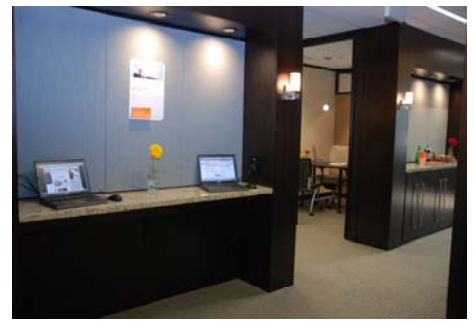
**Project Statement:**

To design a Career Center within the College of Business where employers would come to the university to meet and interview students. The creation of the career center would give opportunities for the College of Business students to interview with corporations without having to travel for interviews.

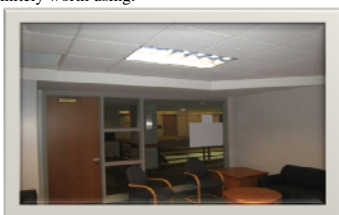
The following were some of the requirements agreed upon by both the client and our office as things we wanted to incorporate into their new space.

- To create a space that would entice employers to come and interview students at the university.
- To create 8 interview rooms, 4 offices, an employer’s kitchen/lounge, large reception area and an application area for students to fill out applications while waiting for their interviews, and a display area for employers to put their company materials all within a 3,500 sq ft. space.
- To create an open and spacious atmosphere by utilizing the window wall as a circulation path and clerestory windows in the panel system. This would help bring in outdoor lighting to the entire office area.
- To use only Haworth furniture. Funds were donated by Haworth and our directive was to use as much Haworth product as possible. It was determined early in the project that we would use Haworth’s LifeSPACE system in lieu of drywall construction.

To help sell the project to the client we utilized Google Sketch-Up. This tool enabled us to better communicate visually what the space would look like in the end. It gave the client a virtual tour of the space which only added to their excitement. Sketch-Up is a tool definitely worth using.



**JUDGES COMMENTS:** Dramatic space. Furniture works *with* the environment, not overpowering it.





2008 Design Competition Awards

**NEW CONSTRUCTION (four entries)**

1st Place—Anne Adesso, Cornell University—Weill Hall

2nd Place—Deanna Whitbeck, Michigan State University—Residential College for Arts & Humanities

3rd Place—Cyndi Curnette, University of Missouri, Columbia—Schweitzer Addition

Weill Hall houses a variety of disciplines for Life Sciences Technology. There are faculty offices, laboratories, graduate student offices, conference rooms, atria lounge areas, classrooms and a café. The design intent for the interiors came from the building’s architect, Richard Meier, and is iconic mid century design. The color scheme of white and black with an accent of red is carried throughout the interior. As the Interiors Project Manager I worked as a liaison with the outside interior designer, the architectural firm and the faculty of the building.

I worked with the outside designer to maintain the iconic design intent but with consideration for the long term use and maintenance of furnishings and carpet selections in the non-laboratory spaces. As you would imagine everyone had an opinion on every detail of the design from fabrics to carpeting. One particular aspect of the architecture, the toe window, caused great concern for the designers and the clients. Since the window was a significant part of the architecture, from the interior as well as the exterior, it needed to be clear of furniture and future “piles of stuff”. The problem to solve was how to make the space useful to the client while maintaining clear floor space in front of the window. I resolved this issue through the selection of Herman Miller’s Abak Environments. Abak is light scale furniture leg base style used to span the toe window. It was designed to match up with the window mullions without encroaching on the toe window space allowing it to remain free of furniture. Spanning the window the worksurface gives useful layoff space to the clients while discouraging clutter at the toe window. It was interesting design collaboration on a wonderful building.



**JUDGES COMMENTS:** Clean, classic design. Furniture complementary and respects Architecture.

Anne Adesso, MA, AUID, ASID, NYCID, NCIDQ  
Interior Design Project Manager  
Planning Design and Construction  
Cornell University

**2008 Design Competition Awards  
BEST OF SHOW  
Anne Adesso**



Farewell to Anne Adesso -

It is with deep regret that AUID has accepted the resignation of an extremely valuable asset to our organization. Earlier this year, due to the economic conditions we all are facing, Cornell University put all construction projects on pause. Consequently, Anne 's position with CU has been eliminated. Cornell offered and Anne accepted a retirement package, her last day at Cornell will be June 30th.

Anne joined AUID in 1990, in 2001 she was elected as a Board Member and hosted the group at Ithaca in 2002. Over the years of her membership, Anne has submitted and won places in several design competitions, including the 2008 Best of Show! In 2003 she was elected and served two terms as our First Vice President.

In 2007, Anne was elected President and has given AUID much in the way of dedication not only to the profession but as a supporter of our further education.

We would like to wish her well!

Julie Lenczycki, 1st Vice President and Clearstory Editor

