

AUIID

Association of University Interior Designers

Clearstory

Volume 31

Winter 2010-Spring 2011



Featuring:
The 2010 Conference
At Georgia Institute of Technology

Is | Competitions | Scholarships | Tours | Reminders

1

3

6

7

37



Back row from left: Alicia Kelly Stryker, Molly O'Donnell, Julie Lenczycki, Cindy Howe, Lorraine Malone, Sheri Harper
 Front row from left: Jessica Brownfield, Maggie Talmage, Elspeth Brown, Elaine Bradner

A Letter From the President -

Welcome to a new year for the Association of University Interior Designers! We have made some huge strides to better serve the membership - dues can now be paid using Paypal and our website is fast becoming a valuable tool to recruit or inform members! Since the conference, the board has been looking at better, more efficient ways for members to communicate or post questions to the group. The website's forum has had many challenges and identity problems with alias names. Consequently, we have formed a group within the professional network called LinkedIn which is similar to the popular Facebook only easier to use than our current website's forum page and easier to manage the security settings. You use your name and not an alias to network not only with AUID members but other design professionals. LinkedIn is easy to use, allows you to subscribe or unsubscribe to discussions, allows you to search by topics/discussions and allows you to see all relative conversations of one topic's discussions in one setting not having to sort through a zillion email messages. We have tested the security of non-AUID friends trying to view the topics and so far nobody has been able to gain access to any sensitive topic.

US



is month, current AUID members will receive an invitation to join so e board would like the membership to begin using this means to pose estions of other members **and not use email messages to pose estions**. Thanks to Kris Willis, we have a member profile that will need be filled out when you renew this year's membership. The questions ll aid everyone in knowing what area a person specializes in, how long ey have been at their university and other professional information lbits.

stly, I want to thank Alicia and Polly for hosting the group at Georgia ch! As you will see inside this Clearstory, everyone who attended joyed touring their campus, listening to the various speakers and aring the Interface story & touring their facilities.

we move into another hectic summer on our campuses, we can look rward to our annual conference at the University of Illinois at bana-Champaign. Remember to take a deep breath and go online to serve your spot at Illinois-

<http://www.regonline.com/builder/site/Default.aspx?EventID=950568!>

ulie Lenczycki, President, Association of University Interior Designers.

COMPETITIONS

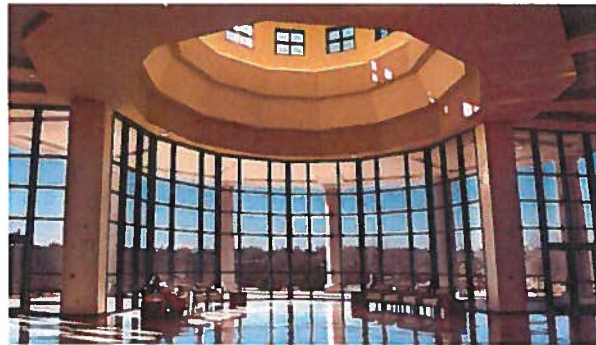
Presenting the 2010 AUID Design Competition Winners

New Construction

1st Place: Lannetta Knotts
The Ohio State University
For The Ohio Union



2nd Place: Elspeth Brown
University of Central Oklahoma
For The Forensic Science Institute



3rd Place: Elspeth Brown
University of Central Oklahoma
For The Center for
Transformative Learning



COMPETITIONS

Presenting the 2010 AUID Design Competition Winners

Renovation over \$150,000

1st Place: Kat Marian
San Diego University
For SDSU Peterson Gym
Empire Lounge



2nd Place: Adelina Jaha
University of Central Oklahoma
For The Academy of
Contemporary Music@UCO



3rd Place: Tina Mann
University of Missouri - Columbia
For Lee Hills Photojournalism
Gallery and Lab



COMPETITIONS

Presenting the 2010 AUID Design Competition Winners

Renovation \$50,000-\$150,000

1st Place: Sheila Gassner
And **Best of Show**
Lincoln University
For MLK Hall 4th Floor
Student Lounge

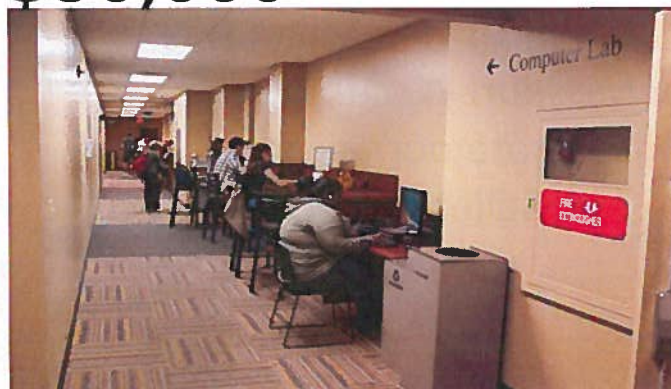


2nd Place: Alicia Kelly Stryker
Georgia Institute of Technology
For CPSM Planning Studio



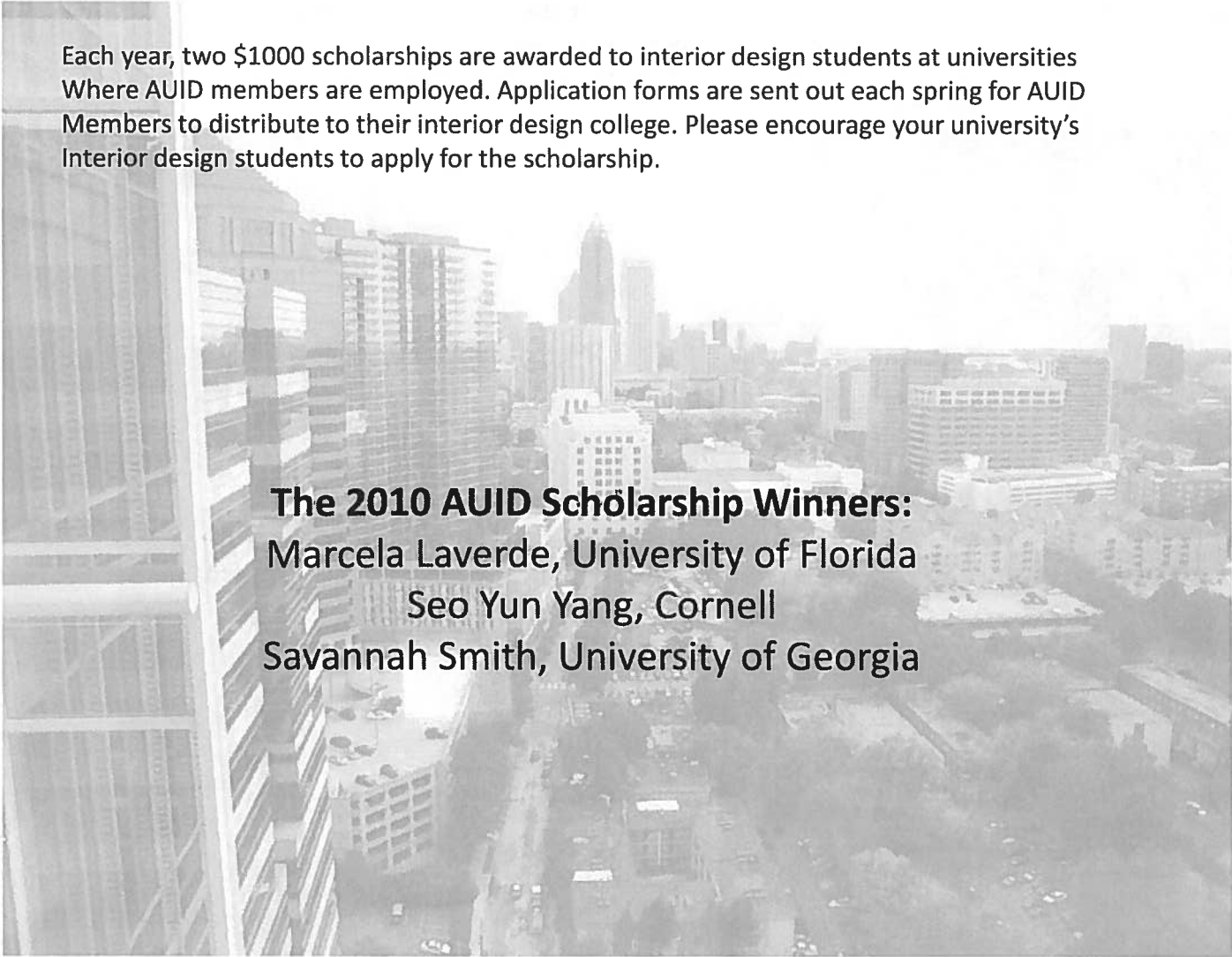
Renovation under \$50,000

1st Place: Tracy Shultz
University of Missouri - Columbia
For Memorial Union
Surfing Stations



SCHOLARSHIPS

Each year, two \$1000 scholarships are awarded to interior design students at universities Where AUID members are employed. Application forms are sent out each spring for AUID Members to distribute to their interior design college. Please encourage your university's Interior design students to apply for the scholarship.



The 2010 AUID Scholarship Winners:
Marcela Laverde, University of Florida
Seo Yun Yang, Cornell
Savannah Smith, University of Georgia

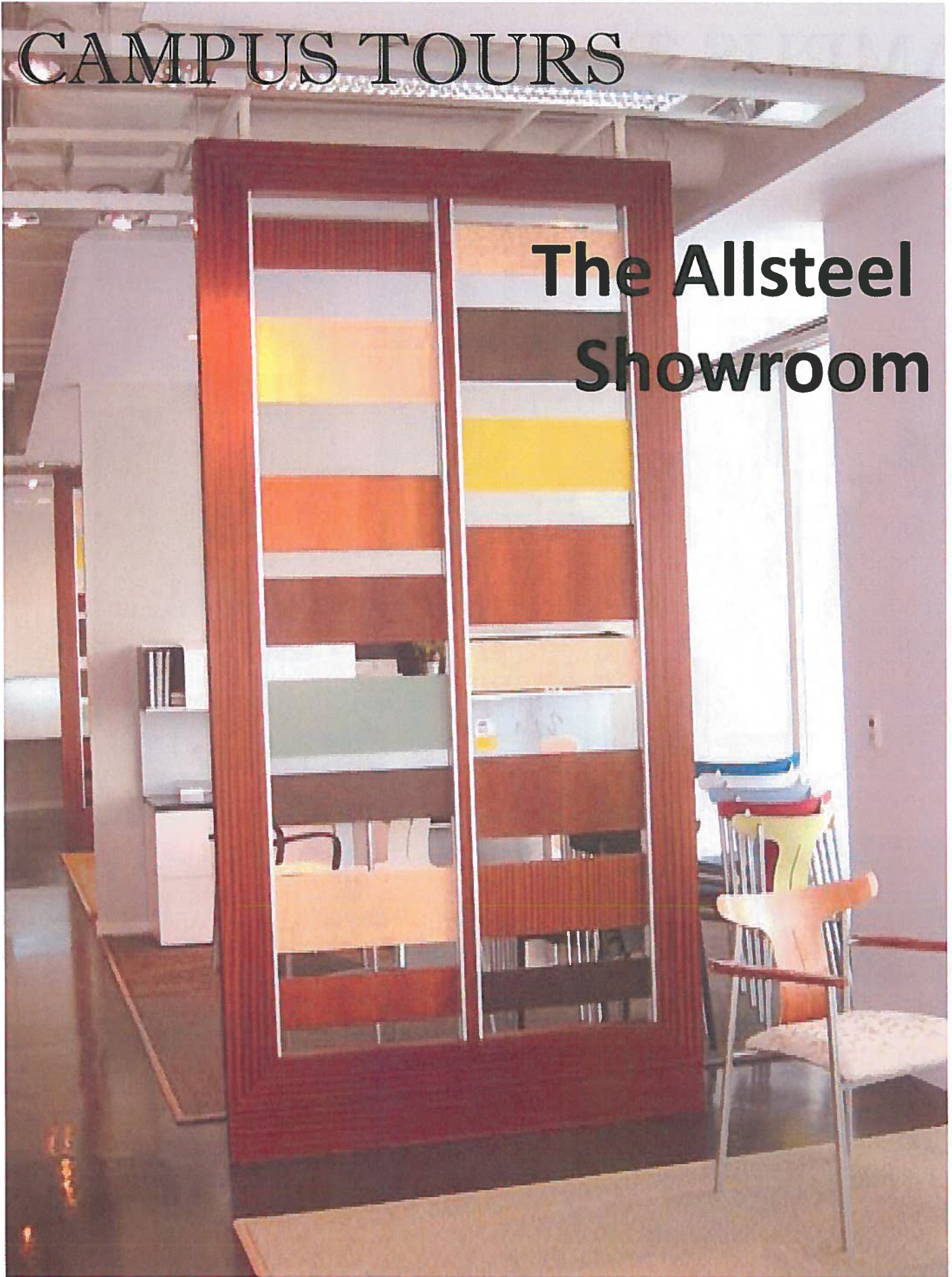
CAMPUS TOURS

This past October, AUID members met at Georgia Institute of Technology in Atlanta, GA for AUID's 31st Annual Conference. Included in this conference were tours of campus buildings including the university Library, College of Management, and Campus Recreation Center (site of the 1996 Summer Olympic Games,) sessions from the keynote speaker, Melissa Galt (great grand-daughter of architect Frank Lloyd Wright,) tours of showrooms including Alsteel and Knoll, and tours of the Interface Carpet Mills.



CAMPUS TOURS

The Allsteel Showroom



CAMPUS TOURS



Images: The Allsteel lounge and desks in the showroom

CAMPUS TOURS



Images: Evening Reception at the Allsteel Showroom

CAMPUS TOURS



Left: Melissa Galt with poster of great grand-Father, Frank Lloyd Wright. Top: Sheri Harper With Melissa Galt

S.E.E. the M.A.G.I.C.

by Elspeth Brown—The University of Central Oklahoma

The guest speaker for the 2010 AUID conference was Melissa Galt, motivational speaker, interior Designer, daughter of actress Anne Baxter and great-granddaughter of architect Frank Lloyd Wright. During our two sessions with Melissa, she shared the importance of embracing our life and living to Our fullest potential. She spoke of creating experiences that would be remembered in the heart and The head for a lifetime. She taught two acronyms to stress the importance of “bringing the whole of You into your life.”

M – Making it a celebration
A – Absolutely Memorable
G – Genuinely Creative
I – Interestingly Expressive
C – Consciously Generous

S – Set your intention
E – Eliminate your doubt
E – Embrace Focus

CAMPUS TOURS

Scale-Up Classroom

by Lisa Vanderloo – Emory University

The GA Tech model of a Scale-Up Classroom features small groupings of tables and chairs; all centered on individual projection screens. This enables all students to have an unobstructed view of a screen. The classroom eliminates the traditional “front of the room” and allows students to work in small groups with improved visual access to information. Each group can log in to Ga Tech’s software and project information from their laptop onto the screen. Some benefits of the space include expansive whiteboarding surface, the ability to easily reconfigure the furniture to suit the needs of the class, and the ability to control the amount of natural light coming into the space. Many instructors like the fact that it allows for small-group study, and encourages project-based learning. They also like the fact that they can move from group to group to check progress and answer questions. There were a few negatives, in that there was not time to test the technology before the classroom opened, and they are still determining the best way to secure the room, with over \$250,000 of equipment inside. Some professors still prefer to teach in a more traditional learning environment, but it seems this type of collaborative classroom is more conducive to the way students naturally want to learn. The term “Scale-Up” was coined by North Carolina State University. <http://scaleup.ncsu.edu/>



The Swann Building Tour

by Elaine Vastardis – Baruch College

On Tuesday morning after our historic preservation tour of “Old Campus,” we entered the Swann Building on North Ave. This classical three story symmetrical red-brick and limestone façade opened in late 1901 as a dorm. The interior is a beautiful restoration of wood, glass and details to currently house the dept. of Modern Languages.

Sustainability plays a visible part from the hardwood floors to the details of reusing slate boards as a decorative division in the corridors to separate faculty offices. This design also allows light to flow through the space and incorporating the history of the building such as old architectural floor plans, as well as language quotes to adding a decorative and interesting element. All the aspects of this renovation were well thought out down to the flexible and sophisticated furnishings.



CAMPUS TOURS



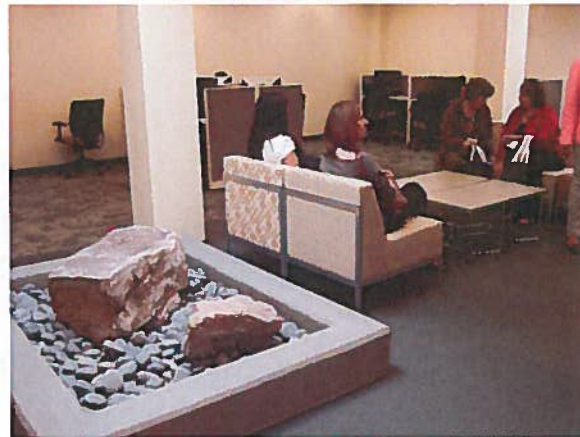
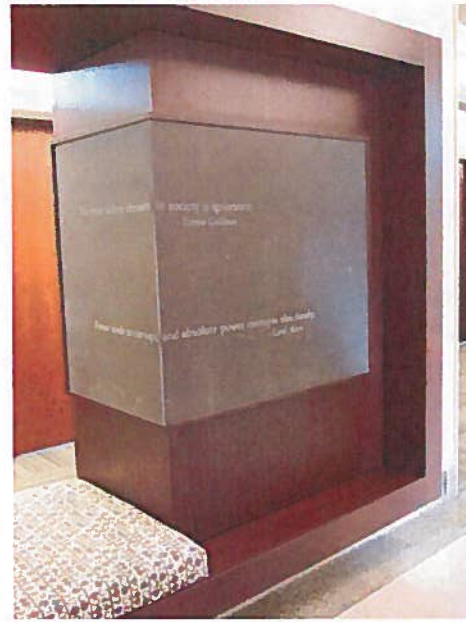
The Swann Building

CAMPUS TOURS

Tour of Old C.E. building

by Molly O'Donnell – Indiana University

The 2008 renovation of the 1938 WPA Civil Engineering building by outside architectural firm Surber Barber Choate & Hertlein earned LEED Gold rating. In addition to site and building shell improvements, upgrades were made to the HVAC, plumbing, electrical and lighting. Some doors were reused. New finishes were local, had a high recycled content &/or low VOCs.



One challenge was to convert large laboratories and extra wide corridors into comfortable faculty offices, classrooms and conference rooms. The extra-wide corridors were divided by storage units with built-in benches. On the upper floors they mounted slate chalkboards from the old labs, etched with quotations. The open bench seating allows air and light through. To take advantage of natural daylight, the basement computer lab has skylights. But to ensure no computer equipment would be damaged should there be a leak, small rock gardens were installed. The grad students have a pleasant screened-off break area adjacent to their workstations, allowing some daylight through while maintaining separation.



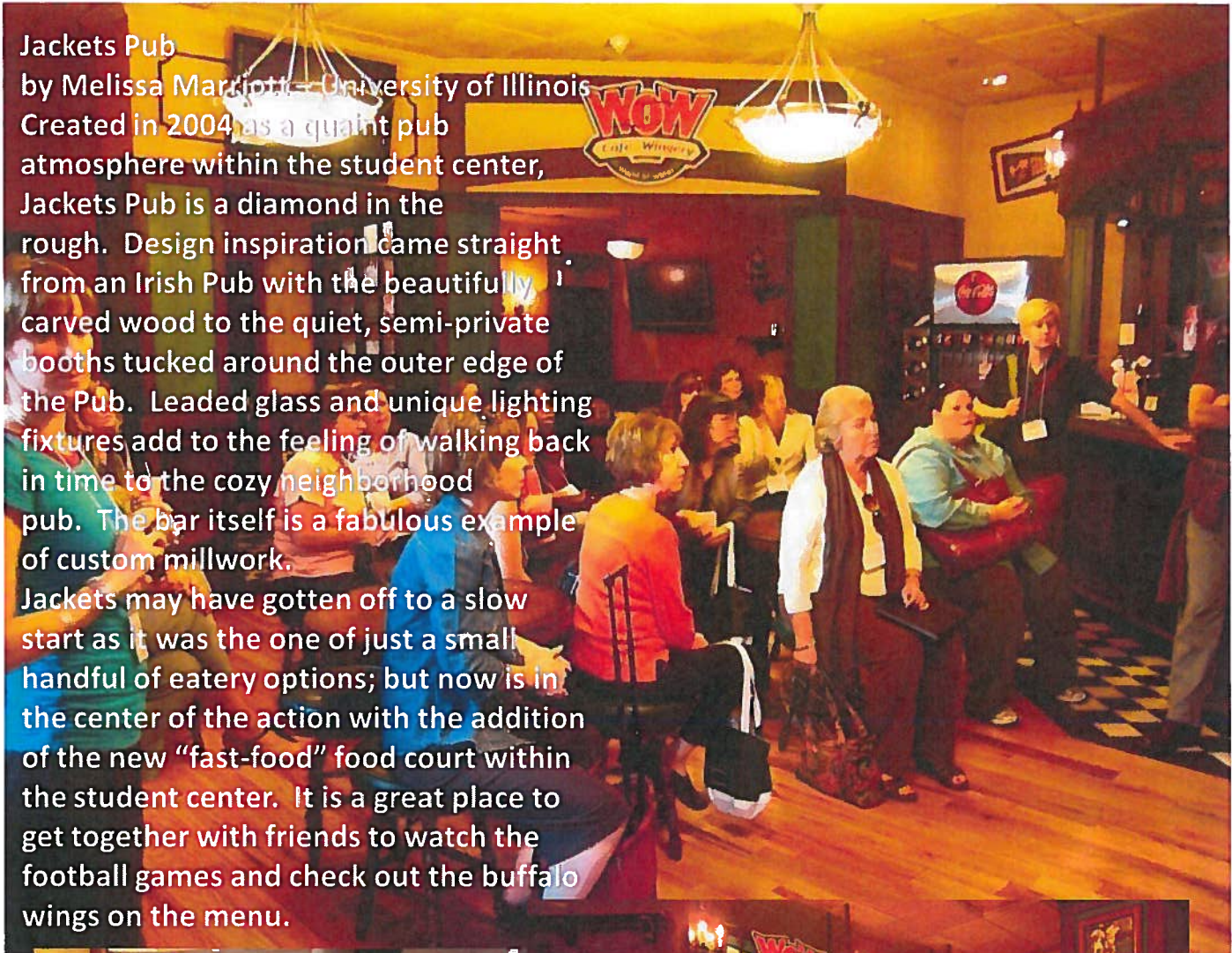
CAMPUS TOURS

Jackets Pub

by Melissa Marjotti - University of Illinois

Created in 2004 as a quaint pub atmosphere within the student center, Jackets Pub is a diamond in the rough. Design inspiration came straight from an Irish Pub with the beautifully carved wood to the quiet, semi-private booths tucked around the outer edge of the Pub. Leaded glass and unique lighting fixtures add to the feeling of walking back in time to the cozy neighborhood pub. The bar itself is a fabulous example of custom millwork.

Jackets may have gotten off to a slow start as it was the one of just a small handful of eatery options; but now is in the center of the action with the addition of the new "fast-food" food court within the student center. It is a great place to get together with friends to watch the football games and check out the buffalo wings on the menu.



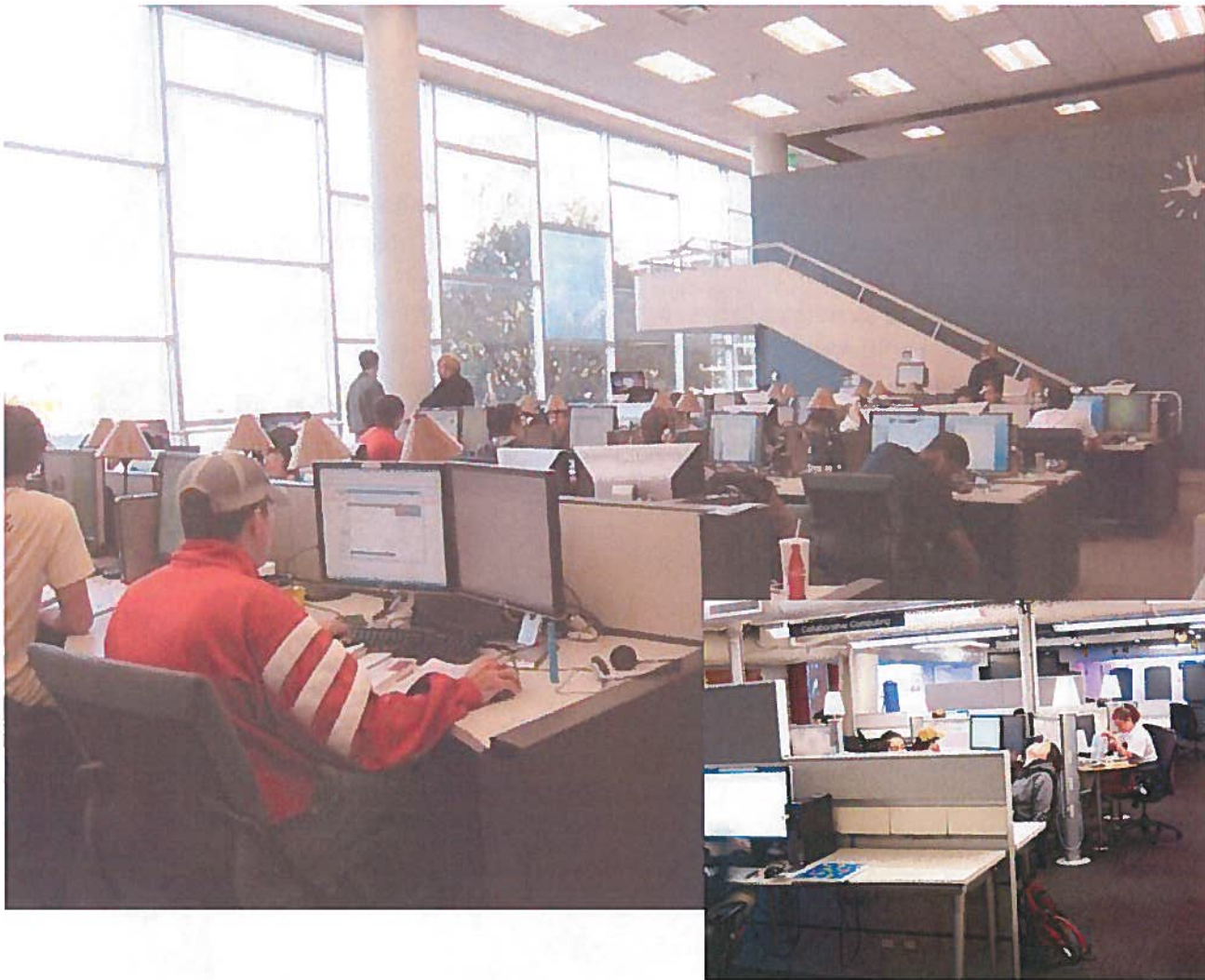
CAMPUS TOURS

Georgia Tech Library Tour

by Lorraine Malone – University of Kansas

- The library renovation was described as the transformation of a “Soul Crushing Atmosphere” by Charlie Bennett, our guide and also a library associate.
- The following are some of the interesting findings from student surveys and observations by the project committee.
- Graduate students were found to use as many spaces for group study as undergraduates.
- Undergraduates were noisier than graduate students when using collaborative spaces.
- 85 to 88% of undergraduates use the library versus 80 to 85% of the graduate student population.
- The average table at the library was used by 2.5 students.
- Reconfigurable furniture was preferred by the students surveyed.
- There were 5 priorities determined for the remodel of areas of the library based on feedback from student surveys.
- More power-All students are required to have laptops at Georgia Tech
- Improve lighting
- Aesthetics and design were important
- Define open space study areas
- More spaces for laptop users.

CAMPUS TOURS



The need for more power for laptops and other devices were met through spending ¼ of the total budget on electrical upgrades. Installing new light fixtures as well as filtering the natural light from the large windows through out the study areas improved the lighting. The furniture components in various areas were used to create fixed and free zones of study. Furniture in the group activities areas included sliding panels with white boards, mobile fabric panels, and readily available electricity from extension cord reels suspended form tracks mounted close to the ceiling. Moveable tables in various shapes and sizes were also available to use. The fixed areas of study consisted of more cubicle type furniture for individual computer use or a quiet study space. Other areas that the library now provides students are a coffee/smoothie bar, a presentation practice room and a performance/display space. The Georgia Tech library is a very highly utilized building on campus as witnessed during our tour.....that was until the fire alarm went off....

CAMPUS TOURS

Georgia Tech Masterplan

by Maggie Talmage – Indiana University

Like so many other colleges and universities, Georgia Institute of Technology is growing. In 1997, the university covered 750,000 square feet. In 2008, the university grew to 14.5 million square feet. The projection for 2014 is 15.5 million square feet, with an approximate grow of 700 students more



each year. The university focuses on three main points: Education, technology appropriate learning spaces; Economy, the use of physical and fiscal resources; and Ecology, “green” buildings. There are multiple aspects that make up the Master Plan. The Landscape plan works to reduce spill water runoff, to protect the network of utilities underground, to understand lighting, and to plant new trees to replace fallen trees. The Parking and Transportation plan works to reduce parking spaces and provide routes and storage

for alternate means of transportation like bicycles. The housing plan takes note that 53% of the students (~10,000) live on campus and works to retain students after their freshman year by providing suite and apartment style housing spaces that are becoming more desirable. The GA master plan also has a large focus on sustainability. Its approach to sustainability is 3-fold: Education, learning in the classroom; Research, discovery in the laboratory; and Management, practices on campus. Existing sustainable buildings on campus include Swan, College of Management, Student Health Center, Old Civil Engineering Building, and Campus Recreation Center. Current sustainable projects include Zelnak Basketball Practice Center, Reinsch-Pierce Auditorium, and Undergraduate Learning Commons.

CAMPUS TOURS



Above Left: Chihuly Artwork in College of Management Atrium. Above Right: College of Management
Left: Room in Hefner Residence Hall

Hefner Residence Hall

by Kenna Weber – University of Missouri

Built in 1969 Hefner is a traditional, liner styled red brick building that is set in a beautifully wooded area of campus. With mature trees throughout, the community of dorms share an attractive and inviting landscape. The building is a double loaded corridor dorm with community bathrooms. The building was renovated four years ago and now features fresh interior finishes, new furnishings, bright cheerful and ADA accessible bathrooms and a new elevator. The building offers learning community style living to its freshman occupants and is designated as co-ed by floor. There are lounges with study space on each floor, a kitchen on the third floor with laundry and a large community lounge and gathering space in the basement. The corridor bathrooms are spacious and colorful with a wonderful wall created with a random design of multicolored, multi-sized tiles. This wall gives the bathrooms an intense saturation of color without commitment to a single color scheme.

CAMPUS TOURS

Hefner Residence Hall

by Kenna Weber – University of Missouri

Built in 1969 Hefner is a traditional, liner styled red brick building that is set in a beautifully wooded area of campus. With mature trees throughout, the community of dorms share an attractive and inviting landscape. The building is a double loaded corridor dorm with community bathrooms. The building was renovated four years ago and now features fresh interior finishes, new furnishings, bright cheerful and ADA accessible bathrooms and a new elevator. The building offers learning community style living to its freshman occupants and is designated as co-ed by floor. There are lounges with study space on each floor, a kitchen on the third floor with laundry and a large community lounge and gathering space in the basement. The corridor bathrooms are spacious and colorful with a wonderful wall created with a random design of multicolored, multi-sized tiles. This wall gives the bathrooms an intense saturation of color without commitment to a single color scheme.

CAMPUS TOURS

The student rooms are carpeted with broadloom carpet. The replacement cycle for the student rooms carpet is 10 years. The staff deep clean the carpet in the student room twice per year to maintain and extend the carpets life. Student rooms are furnished with laminate student room pieces. Each student has a loftable bed, desk, dresser, two position chair and a wardrobe. These pieces offer each student maximum flexibility for creating a space suited to their personal needs. Hefner hall offers students a beautiful location, comfortable student rooms, nicely appointed study and lounge spaces along with the amenities expected by today's students.

Tenth and Home Housing Tour

by Elaine Bradner – Miami University (Ohio)
Our tour was led by Daniel Morrison, Director of Residential Life. The apartments at 10th and Home are for married students and families and house predominantly international students who come from thirty different countries. It is an interesting and diverse community that provides opportunities for families to gather in common spaces. There are 394 units, and since most students don't have cars, the sense of community is even stronger here. There is a community room, a public kitchen and an area where children can play. The ages of the children who live in the apartments range from toddlers to high school. In addition to the students, there is a hall director as well as RAs who are responsible for programming that includes support groups, language classes, golf classes, and classes on dissertation writing. There are one and two bedroom apartments that also include a bathroom, living room, kitchen, eating area and a washer/dryer closet. Rent is all inclusive as it is easier for students to manage a single fee. Apartments are unfurnished, but there are garage sales given by previous students and a nearby IKEA store that will deliver. 10th and Home is definitely a nice housing option at Georgia Tech.



CAMPUS TOURS

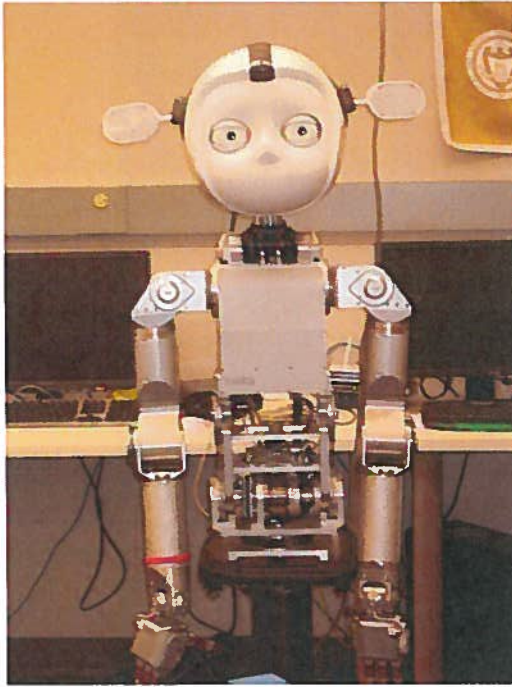


Marcus Nanotechnology Building

By Carlos Lugo – The Ohio State University

It is a facility dedicated to nanotechnology research and development. The 90 million-dollar facility has 190,000 sq. ft. of space and was opened in 2009. This microscopic level research is expected to have applications that range from medicine to consumer products and the range of possible uses continues to grow. The building is organized with clean rooms on one side and the labs, office and conference spaces on the other one. The 30,000 square feet, clean room side is contained in a concrete structure with no outside windows and special mechanical systems. The research that takes place in this area requires a sterile environment in order to maximize the potential of nanotechnology. One of the goals during the design of the office side was to allow as much natural light in the labs as possible. The panels between the office workstations were kept low to help achieve this. The workstations for the research staff are designed as hoteling stations. They are not meant as permanent offices. The labs are used by students from many disciplines including civil engineering, physics and organic and inorganic chemistry.

CAMPUS TOURS



Bio Quad

By Carlos Lugo – The Ohio State University

The Bio Quad is a complex of science and research buildings arranged around a central courtyard. The oldest building in the group was built in 1999 and the newest one in 2007. Fifteen hundred people work and study in this complex.

The disciplines include science, engineering, environmental science, biochemistry and bio-medical engineering. The organization between the buildings and inside them is meant to encourage collaboration between people using the buildings.

Part of the sloping, central courtyard has small retaining walls that serve as seating and the main café for the complex is a stand-alone building meant to entice building users out of their buildings and into an area where they can have interactions with colleagues from other disciplines. The interiors of some of the buildings are organized in the same way as the quad. The Parker Pilot Bio Tech building has a central atrium and wide corridors around to promote

chance encounters within the building. The Molecular Science and Engineering building is organized around research neighborhoods where the intention was that to break down the traditional division of academic disciplines and instead bring people from different areas to work together in projects. Other buildings in the quad include the Ford Environmental Science & Technology Building, the U.A. Whitaker Biomedical Engineering Building and the Petit Institute for Bio-engineering and Bioscience.

Sustainability has been one of the driving forces of the design of the buildings and the central space. The complex is connected to the Eco-Commons project that is restoring creeks and green spaces in the area. Cisterns are being used to collect and store rainwater runoff from the buildings and the site.



CAMPUS TOURS

An Afternoon Date with Robotics

by Susanna Johnson – University of Alabama

After a refreshing lunch at Woodruff Dining Hall, we boarded the bus for a quick trip over to the College of Computing Robotics and Intelligent Machines. Here, we toured an older building recently renovated into an innovative and collaborative space. Interior elements included neutral paint, bold Interface carpet and reconfigurable Allsteel furniture. Our tour guide and department chair, Dr. Henrik Christensen, discussed some of the goals for the renovation such as lower cubicle heights to create more of a sense of community, shared research space to be assigned out as



grants are awarded and a work environment that fosters collaboration between professors and graduate students. One challenge of the older space plan was a sense of isolation. Cubicle walls were higher so that it was difficult to tell if anyone was still working in the space. Researchers have varied schedules, often times they work throughout the night running tests, and reviewing data so

being aware of surroundings was crucial to their feeling of safety. This challenge was met by lowering the cubicle walls so that at any point, the professors and students can stand and be able to see their work area and any fellow researchers.

For years, individual research rooms were assigned out and space was rarely reallocated. Dr. Christensen recognized that there was a better way to manage research lab space. He developed common research rooms in the new space. This paradigm shift allows Dr. Christensen to assign out research space as grants are awarded. Instead of individual rooms, now professors are given a booth or area within a larger shared space. After the expected initial push back, this system is working well for the researchers and even creating more collaboration between parties.

Another innovative idea Dr. Christensen put into action was very small, intimate meeting rooms. The meetings rooms were designed for a private meeting lasting 30 minutes or less. However, within each cluster of cubicles, he included a collaboration area. These areas are for more brainstorming sessions or longer meetings. And allow for different work groups to join in as they can. Again, creating an environment that leads to teamwork rather than building silos.



CAMPUS TOURS



Above: Olympic Venue. Left: Current Exterior
Below: Interior View of CRC



Campus Recreation Center (CRC)

by Becky Owens – Georgia Perimeter College

The Campus Recreation Center (CRC) is a 300,659 sq.ft. facility that was completed in August 2004. This state of the art facility is a unique expansion of the existing

swimming and diving venue built for the 1996 Olympic Games. This new 15,000 seat aquatic venue was attached to the existing student athletic center which was built in 1977. This venue was built as a freestanding, outdoor shelter for the swimming and diving competitions. After the Olympics, the aquatic facility was incorporated into what is now called the Campus Recreation Center. During the expansion, the top 5 rows of the open air stadium were removed to create the third level above the swimming and diving facility. On the third level, there are 6 basketball courts and numerous intramural, fitness and game rooms. Topping the building, on the fourth level, is an indoor track with magnificent views of the surrounding city of Atlanta. At the lowest level there is a 15,000 sq.ft. fitness center and a 39-foot climbing wall.

An interesting fact that our tour guide explained, was that, as part of the design, the past president requested a single point of view from the main entry, so that visitors are able to see all the interior components and levels above and below.

Outdoor facilities that support the CRC, abound as well, including one of the largest single turf surfaces and a three phase, custom designed, leadership challenge course.

The CRC provides the students of Georgia Tech with a premier recreation and aquatic center, one that encompasses the best in student life and recreation. The CRC is also a world class aquatic facility for men's and women's varsity swimming and diving team, and attracts premier national, state and local aquatic events.

CAMPUS TOURS



Above: Olympic Pool
Right: Dance Room



CAMPUS TOURS



The memories come flooding back as I stepped into the Knoll Showroom

By Sheri Harper – Western Michigan University

Upon entering the Knoll Showroom, where we were having our appetizer reception, a flood of memories came flowing back to me as I remembered my early years in design. As a IBM Designer in Atlanta from 1980 to 1984 the furniture standards for the company were all what is now call the “Studio” collection from Knoll. The beautiful classic furniture pieces of long long ago.



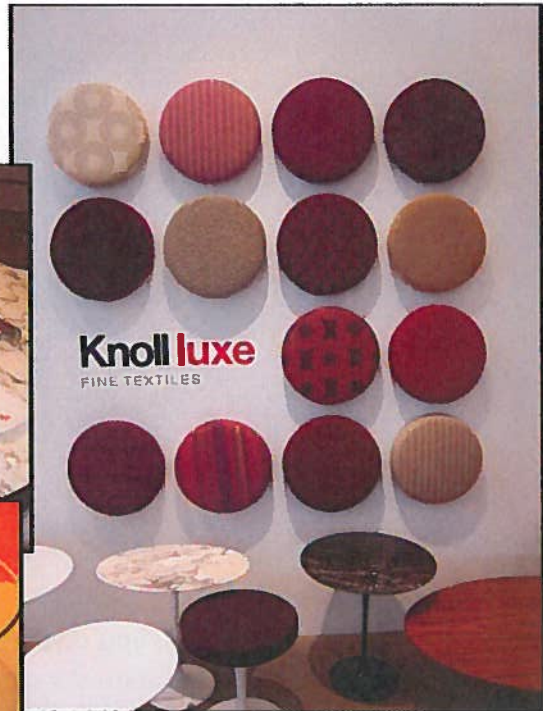
It was fun talking with other AUID Designers as we tried to recall the names of the studio pieces that were scattered about the showroom floor. I think between the 4 or 5 of us we knew all of the pieces and the designers that had designed them.

The showroom was absolutely breathtaking. It was located in the historic White Provision building which is a landmarked industrial-era manufacturing facility. The facility originally served as a meat packing plant. It’s redevelopment was part of a resurgence in the area that brought office and retail space along with condominium units and restaurants.



CAMPUS TOURS

The reception included tasty items such as humus, mixed fruit and assortment of meat, cheese and crackers. Everyone enjoyed their time milling around the show-room floor and visiting with their AUID friends that haven't seen since last year.



The Knoll showroom showcases Knoll, Knoll Studio, Knoll Textiles, and Knoll Luxe. Spinneybeck leathers are also available.

A good time seemed to be had by all. Thank-you Knoll for an enjoyable evening.

CAMPUS TOURS



Strengths Finder 2.0

by Ana Marie Lasich – University of South Carolina

“Do you have the opportunity to do what you do best every day?”

During our visit with Interface, Inc., they shared a piece of their company’s culture with us by providing each of the AUID conference attendees with a book: *Strengths Finder 2.0* and an opportunity for personal growth. The Gallup Strengths Finder is an assessment that identifies what a person is naturally good at, or what a person’s natural tendencies for strengths are. The system provides a common language which enables coworkers, families and/or friends to communicate and complement each other’s focus on what they do best.

Identifying your uniqueness through identifying your natural tendencies for strengths not only contributes, in part, to your social sustainability journey, but also to personal self discovery by focusing on what is right with people and positively focusing on you. The results will give you the opportunity to focus on your strengths instead of weaknesses.

It is reported by focusing on your strengths everyday you are three times more likely to report having an excellent quality of life. It is to be noted that there are no specific strengths more appropriate for one role than for another. Each person should be looked at as an individual on the basis of strength, then that individual should be guided to discover how to build upon his or her strengths within his/her role.

The assessment will take 30-45 minutes to complete; each question is timed and will move on without an answer. This process is designed to help harness the most honest answer from you, which is often your first reaction. Upon completion of the assessment, you will find your top five talents, along with insight on how to develop the talents into strengths.

For more information please visit www.strengthsfinder.com.

CAMPUS TOURS

The Interface Carpet Mill Tour Through Photography



CAMPUS TOURS

The Interface Carpet Mill Tour Through Photography



Images: Weaving Machines at Interface Carpet Mill



CAMPUS TOURS

The Interface Carpet Mill Tour Through Photography



Above: Truckload of recycled carpet
Right Top: Interface Carpet Recycling Center
Right Bottom: Sorting the fibers

CAMPUS TOURS

The Interface Carpet Mill Tour Through Photography



CAMPUS TOURS

The Interface Carpet Mill Tour Through Photography



Images: Bonding the woven carpet to the carpet backing

CAMPUS TOURS

The Interface Carpet Mill Tour Through Photography



Interface Mission Statement: "To be the first company that, by its deeds, shows the entire industrial world what sustainability is in all its dimensions: People, process, product, place and profits - by 2020 - and in doing so we will become restorative through the power of influence."
<http://www.interfaceglobal.com/Company/Mission-Vision.aspx>

CAMPUS TOURS

Friday Visit to the High Museum of Art

by Marcia Melone & Cindy Howe – Iowa State University

Friday morning we visited the High Museum of Art. The original museum was founded in 1905, as the Atlanta Art Association. Mrs. Joseph M. High donated her family residence, which became the first home of the museum. Over the years, the museum moved to a brick structure adjacent to the home and finally in 1968, when the Atlanta Memorial Arts Center opened, the High Museum was at its center. In 1979 funding was secured for the Richard Meier building, which upon completion was deemed one of the ten best works of American architecture in the 1980's. Due to its phenomenal growth, the museum commissioned world renowned architect, Renzo Piano to design three additional building and a piazza. The museum currently houses a permanent collection, including African, American, European, Folk Art, Contemporary and a Mid-20th Century Photography collection. We were fortunate to visit the museum during an exhibition of "The Late Works of Salvador Dali". The exhibit contains more than 100 works, created after 1940, including paintings, drawings, prints and photographs. The exhibit focuses on the artist's visual exploration of science, optical effects and illusionism. Surprisingly, the artist has many large religious works of art, which are included in the exhibit. His large collection of photographs, present a rather whimsical approach to "still life" and reveal a light hearted view of artistic composition. Unfortunately, most of us were not able to visit the special Titian exhibit or much of the permanent exhibit, before we were on our way to the Varsity for lunch or on the van, for the airport. There is never enough time to see everything, but we received a wonderful condensed version of the High Museum of Art.

2011 REMINDERS

AUID 2011 Conference Location:



I L L I N O I S

UNIVERSITY OF ILLINOIS AT URBANA-CHAMPAIGN

Monday, October 10, 2011 – Wednesday, October 13, 2011

Register online at:

<http://www.regonline.com/builder/site/Default.aspx?EventID=950568>

AUID 2012 Conference Location:

Now Calling for a Host University

Interested in hosting one of AUID's annual conferences at your university? Please contact Elspeth Brown if you are interested in hosting the 2012 AUID Conference.

Elspeth Brown -1st Vice President

e. ebrown15@uco.edu

p. 405.974.2242