

**MISCELLANEOUS CAMPUS
SPACES
5,000-20,000 SQ.FT.**

DESIGNER: Lindsay Hellwig
EMAIL: lhellwig@tulane.edu
PHONE NUMBER: 504-862-8164
SCHOOL: Tulane University

ARCHITECTURAL DESIGN FIRM: MZ Architecture and Design

I HAVE RECEIVED PERMISSION FROM THE ARCHITECT FOR
USE OF PHOTOS OF THEIR WORK TO BE DISPLAYED ON THE
AUID WEBSITE: YES

THIS PAGE WILL NOT BE SHARED WITH THE JUDGES, PLEASE
DO NOT INCLUDE ANY FLOOR PLANS OR PHOTOS ON THIS
PAGE.

IN ORDER TO PRESERVE ANONYMITY WITH THE JUDGES,
THE IDENTITY OF YOUR NAME/INSTITUTION SHOULD NOT BE
IN YOUR DESIGN INTENT STATEMENT OR IN PHOTOS (WHERE
POSSIBLE).

PLEASE EMAIL POWER POINT ENTRY DOCUMENT TO AUID
DESIGN COMPETITION EMAIL:

info@auid.org

MISCELLANEOUS CAMPUS SPACES

5,000-20,000 SQ.FT.

PROJECT TITLE: Gibson Hall Financial Aid Suite Renovation
SQUARE FOOTAGE: 5800 SF

PROJECT STATEMENT: The building was constructed in 1894 and houses administrative offices, meeting spaces, and classrooms. In this ground level suite, the university sought to create a home base for the financial aid office. The project's location in a level similar to a basement presented challenges including low ceilings, overhead pipes and infrastructure, leaky windows, and dated elements from previous renovations. Besides overhauling those elements, the renovation included new interior finishes, lighting, and furniture. To respect the historic architecture, the project focused on retaining the building's original structural features such as brick and distinctive lines in wainscoting. These elements were preserved with a modern touch to breathe new life into the intricate craftsmanship of the past.

The design approach pays homage to the building's historical significance by respecting its architectural integrity and character, while also infusing it with a touch of modernity and softness through carefully selected interior details, millwork, furniture, and a soothing color palette. Soft pastels, muted earth tones, and gentle neutrals were chosen to evoke a sense of tranquility and sophistication. These hues not only create a serene aesthetic but also allow the eye to seamlessly transition between the building's historical elements and the modern furniture pieces. The furniture is an added layer of softness that successfully complements the historical atmosphere without overpowering it. The preserved historic windows provide natural light that spills through modern storefront glass to infuse daylight and enhance the overall ambiance. The administrative offices now exude an air of timeless elegance and functional efficiency ensuring the building's continued significance for generations to come. Project cost: \$1.8 million

ACCOMPLISHMENTS OR SPECIAL FEATURES: (limit to 150 words or less)



AFTER



BEFORE



Gibson Hall - Financial Aid Suite



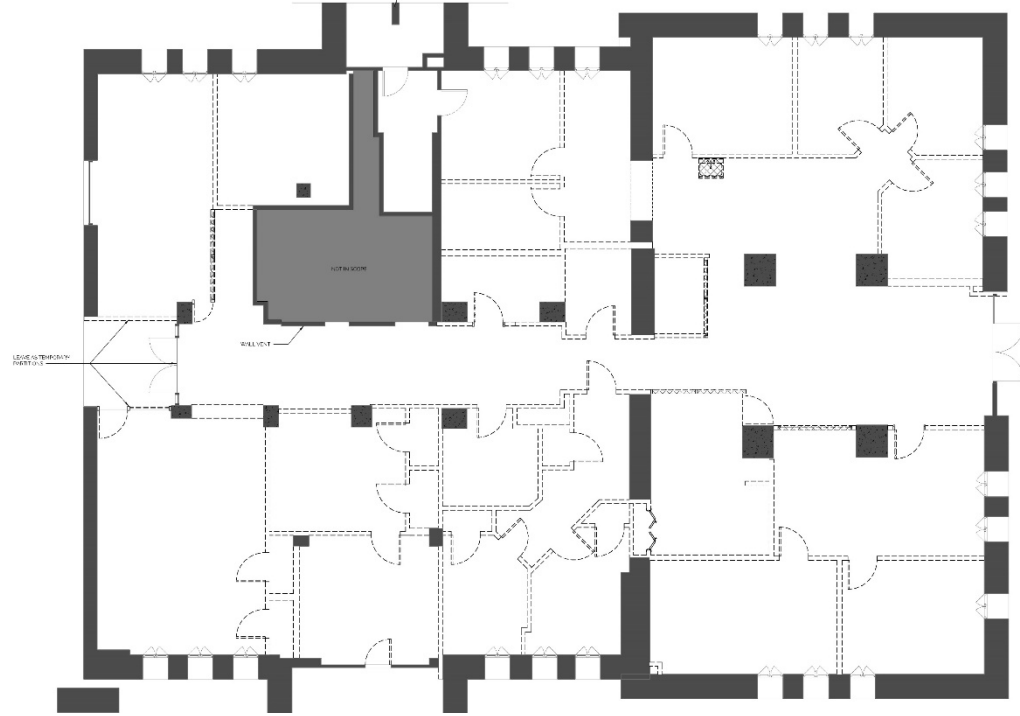
Gibson Hall - Financial Aid Suite

PORTION OF PROJECT DESIGNER IS RESPONSIBLE FOR:

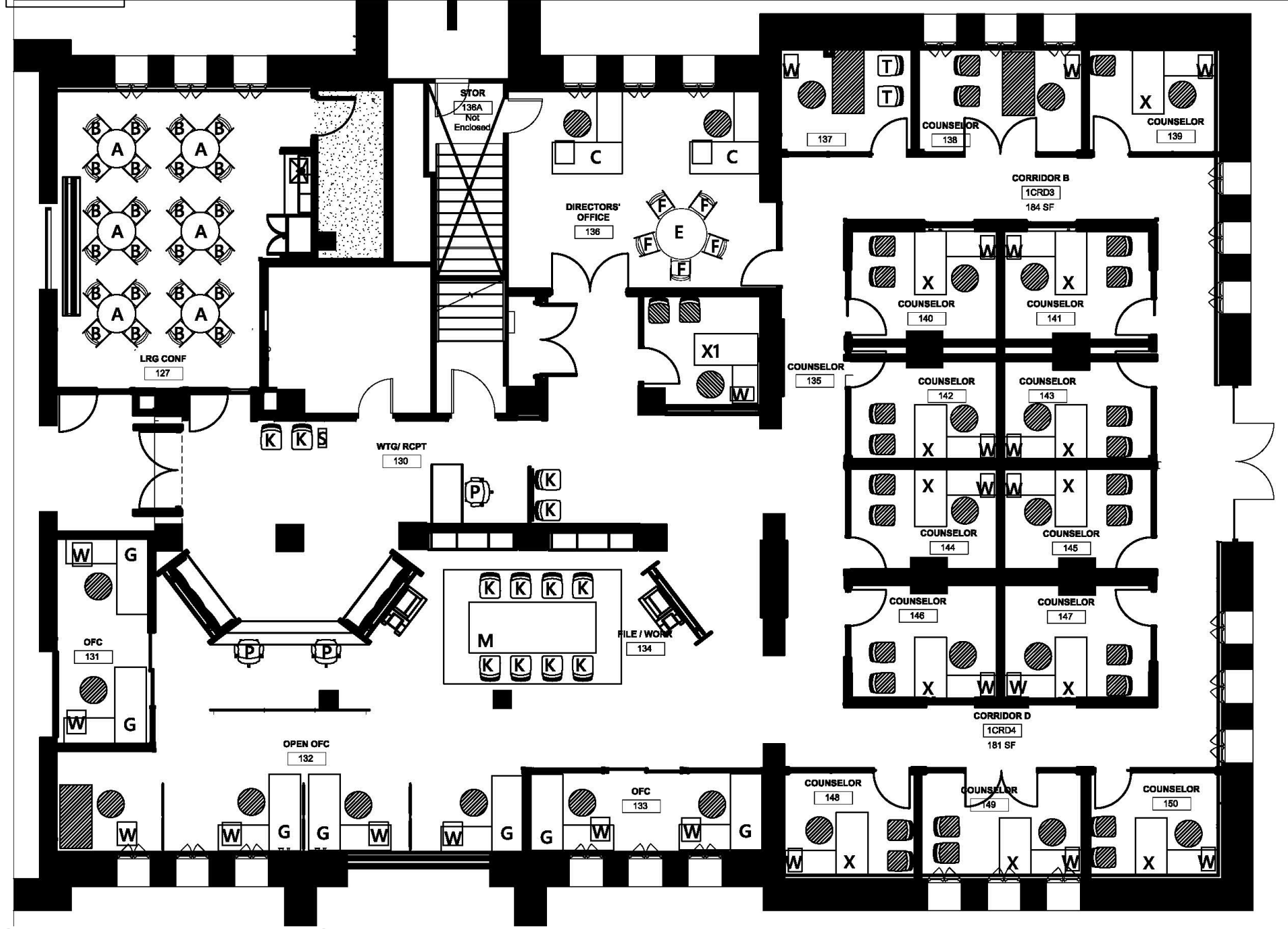
- PROGRAMMING
- BUDGET PREPARATION
- BUDGET MANAGEMENT
- SPACE PLANNING FURNITURE LAYOUT
- FURNITURE SPECIFICATION
- PROJECT COORDINATION AND REVIEW

delete tasks not applicable

BEFORE



AFTER



Gibson Hall - Financial Aid Suite

BEFORE

AFTER

FLOOR PLANS

(Maximum of 4 total, between this slide
and previous slide)

*Please move the "Before" AND "After" text
boxes as needed for the plans (may delete
labels if not applicable).