

MISCELLANEOUS CAMPUS SPACES UNDER 5,000 SQ.FT.

DESIGNER: LeeAnn Crist
EMAIL: leeann@creighton.edu
PHONE NUMBER: 402-699-4656
SCHOOL: Creighton University

ARCHITECTURAL DESIGN FIRM: NA

I HAVE RECEIVED PERMISSION FROM THE ARCHITECT FOR
USE OF PHOTOS OF THEIR WORK TO BE DISPLAYED ON THE
AUID WEBSITE: YES

THIS PAGE WILL NOT BE SHARED WITH THE JUDGES, PLEASE
DO NOT INCLUDE ANY FLOOR PLANS OR PHOTOS ON THIS
PAGE.

IN ORDER TO PRESERVE ANONYMITY WITH THE JUDGES,
THE IDENTITY OF YOUR NAME/INSTITUTION SHOULD NOT BE
IN YOUR DESIGN INTENT STATEMENT OR IN PHOTOS (WHERE
POSSIBLE).

PLEASE EMAIL POWER POINT ENTRY DOCUMENT TO AUID
DESIGN COMPETITION EMAIL:

info@auid.org

MISCELLANEOUS CAMPUS SPACES UNDER 5,000 SQ.FT.

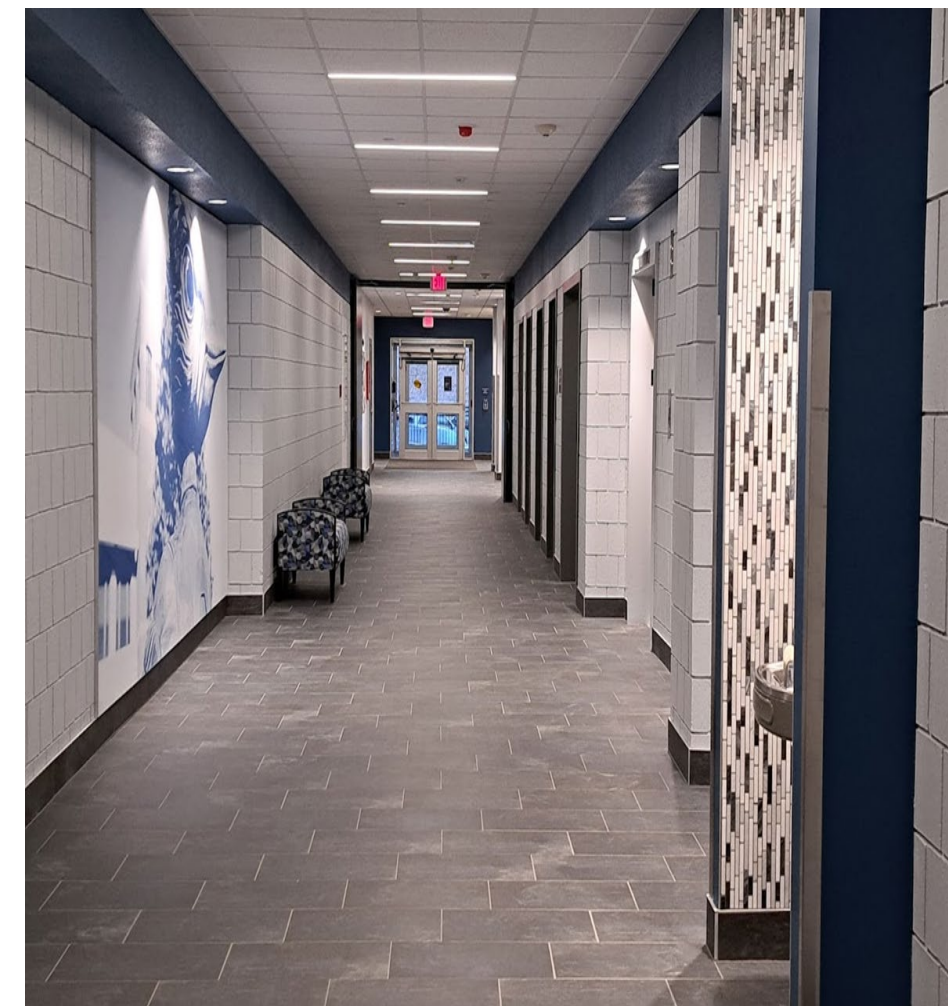
PROJECT TITLE: Criss Hallway Refresh
SQUARE FOOTAGE: 2,839 sq. ft.

PROJECT STATEMENT:

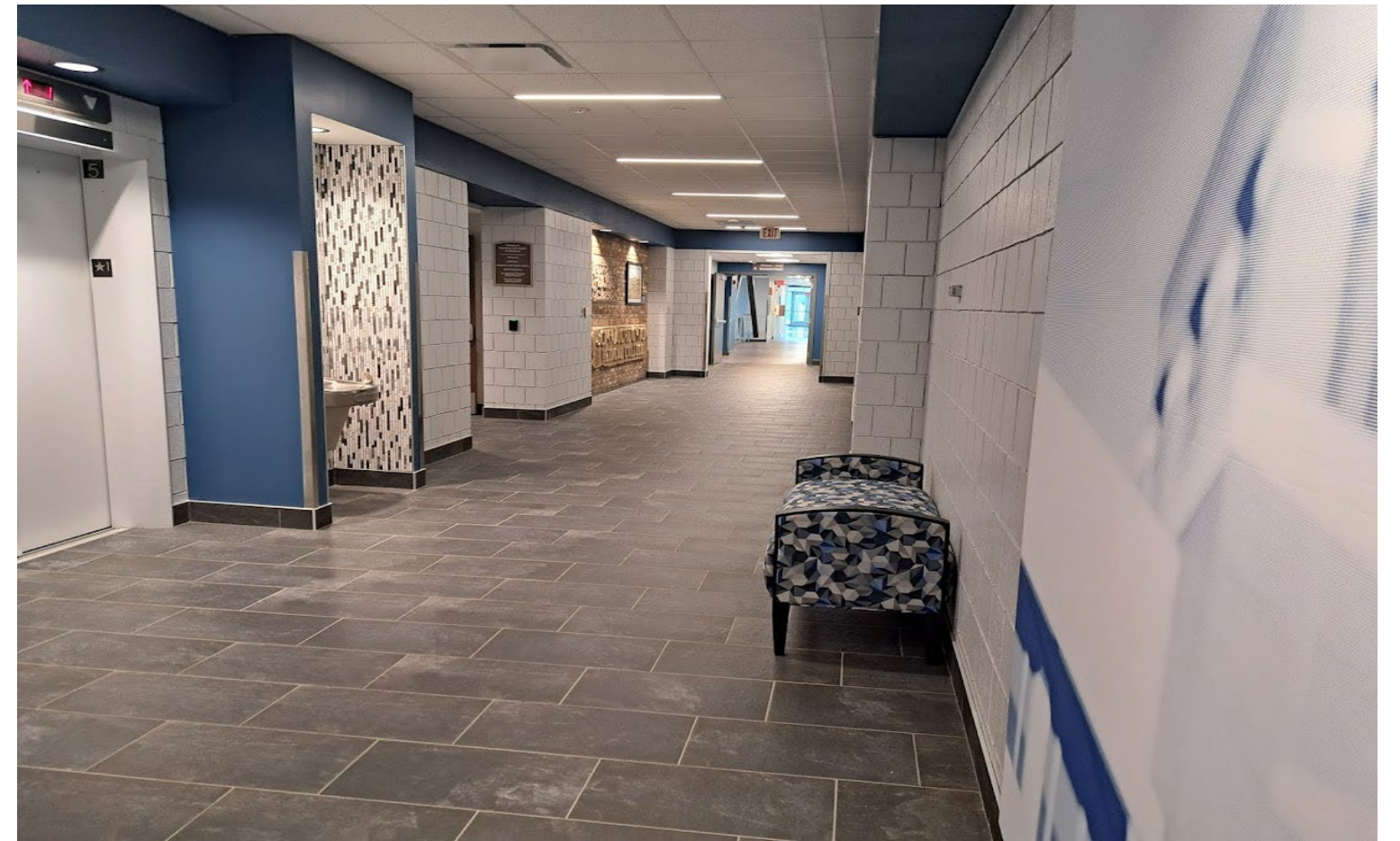
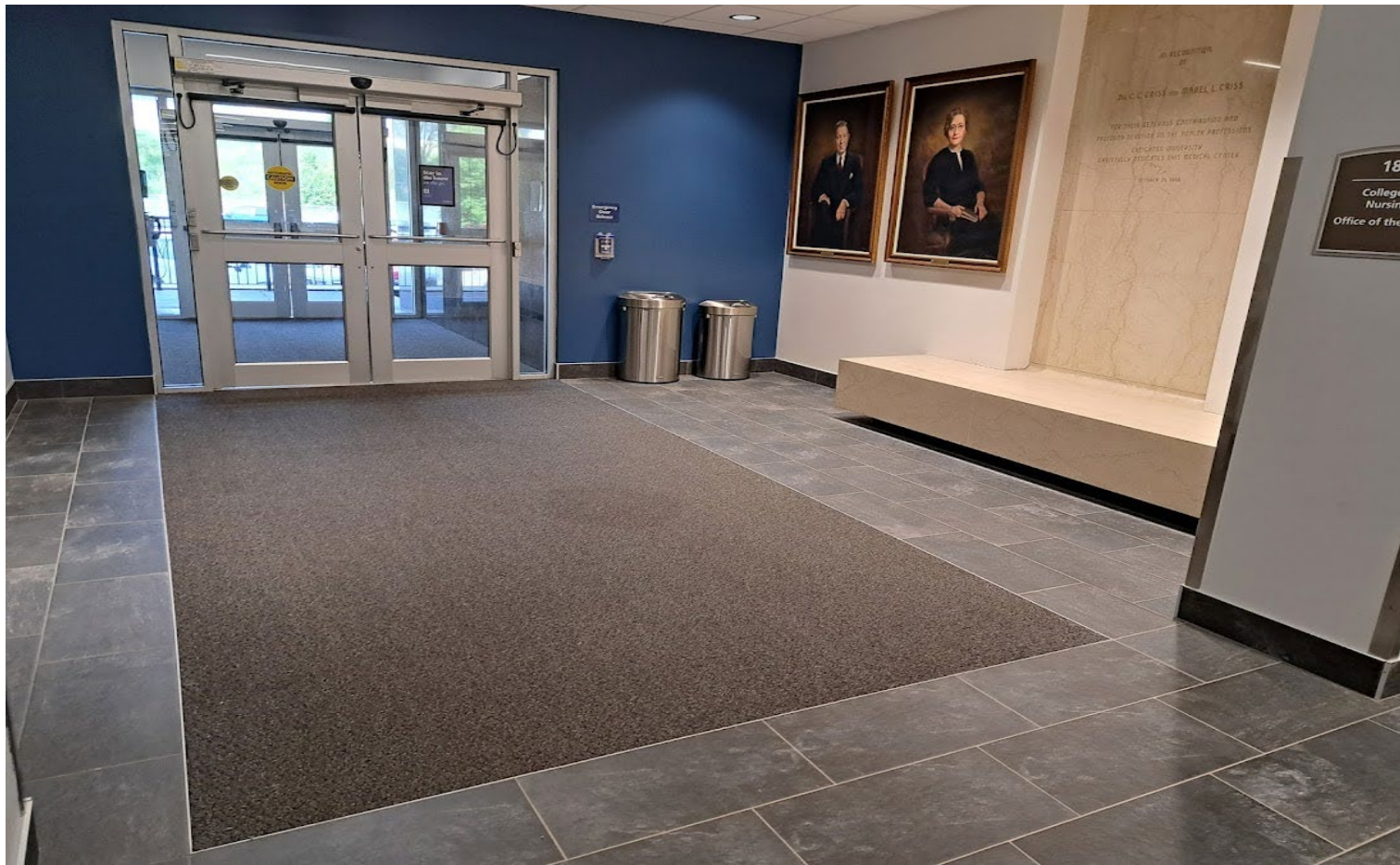
The Project goal was to Refresh and Update the Criss Health Science hallway to make it blend with the rest of the Criss Health Science Complex. Creighton University is opening a new adjacent Health Science building that will be attached with a Skybridge that will adjoin the 2 buildings. The Criss Health Science hallway project needs to have an updated feel, so that both buildings blend their appearances. We will be adding updated lighting, new doors, paint, new flooring, and graphics to give this tired space a new look. One of the entrances to a suite was to remote and not welcoming to students and faculty. Project Budget was \$225 K

ACCOMPLISHMENTS OR SPECIAL FEATURES: (limit to 150 words or less)

The Project goals were accomplished as follows:
Removing the existing flooring and adding new porcelain tile.
Removing existing lighting and adding new LED lighting with lighting controls.
Painting over the existing outdated brick walls,
Replacing all doors with updated wood doors and hardware
Adding Creighton University graphics on the walls
Installing new benches with fabric that blends all the University standard colors.
The entrance to a suite was brought forward to allow us to open the space so that it feels more welcoming and allowed for a nice reception counter. New furniture, lighting, flooring, doors, were added to blend the entire space for a cohesive appearance within the Criss Health Science Complex.



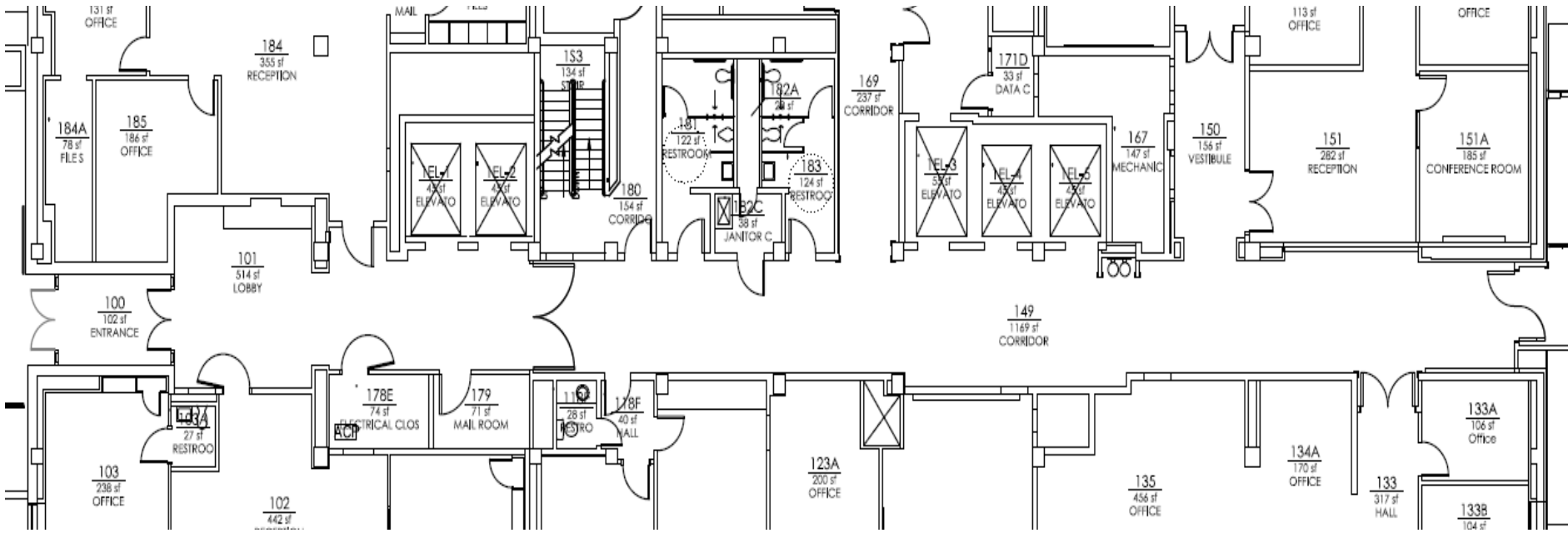
Criss Hallway Refresh



Criss Hallway Refresh

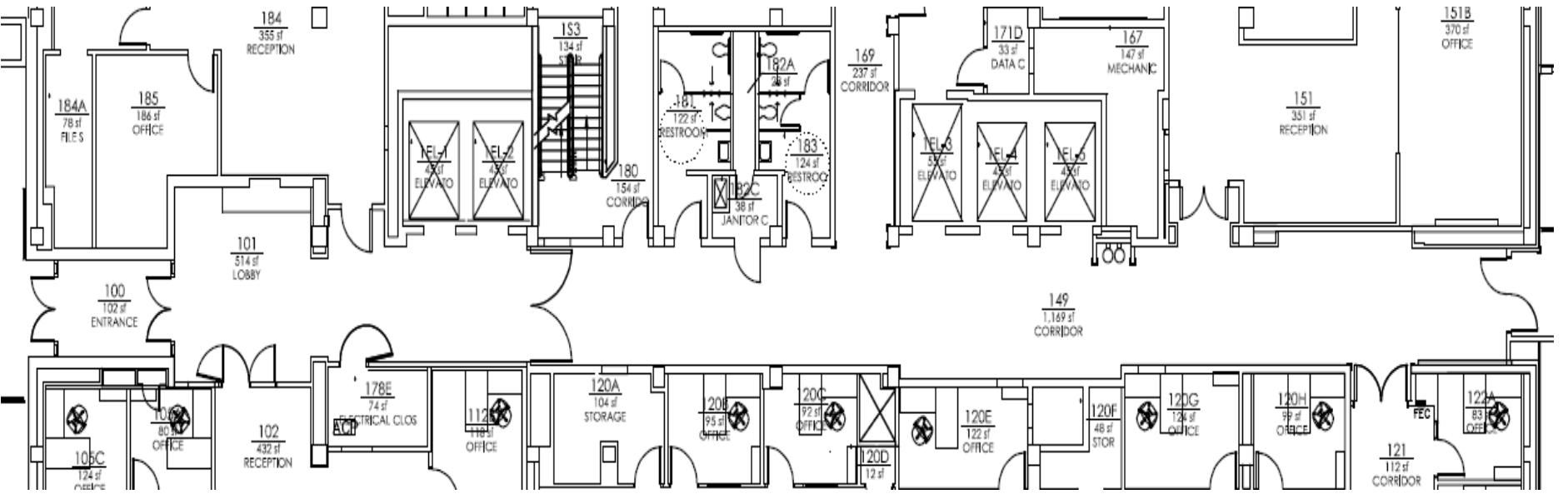
PORTION OF PROJECT DESIGNER IS RESPONSIBLE FOR:

- PROGRAMMING
- BUDGET PREPARATION
- BUDGET MANAGEMENT
- SPACE PLANNING FURNITURE
- FURNITURE SPECIFICATION
- FINISH SPECIFICATION
- GENERAL LIGHTING SPECIFICATION
- SPECIALTY LIGHTING SPECIFICATION
- WALL TREATMENT
- CEILING TREATMENT
- GENERAL SIGNAGE
- SPECIALTY SIGNAGE
- SPECIALTIES: CUSTOM DETAILS
- PROJECT COORDINATION AND REVIEW

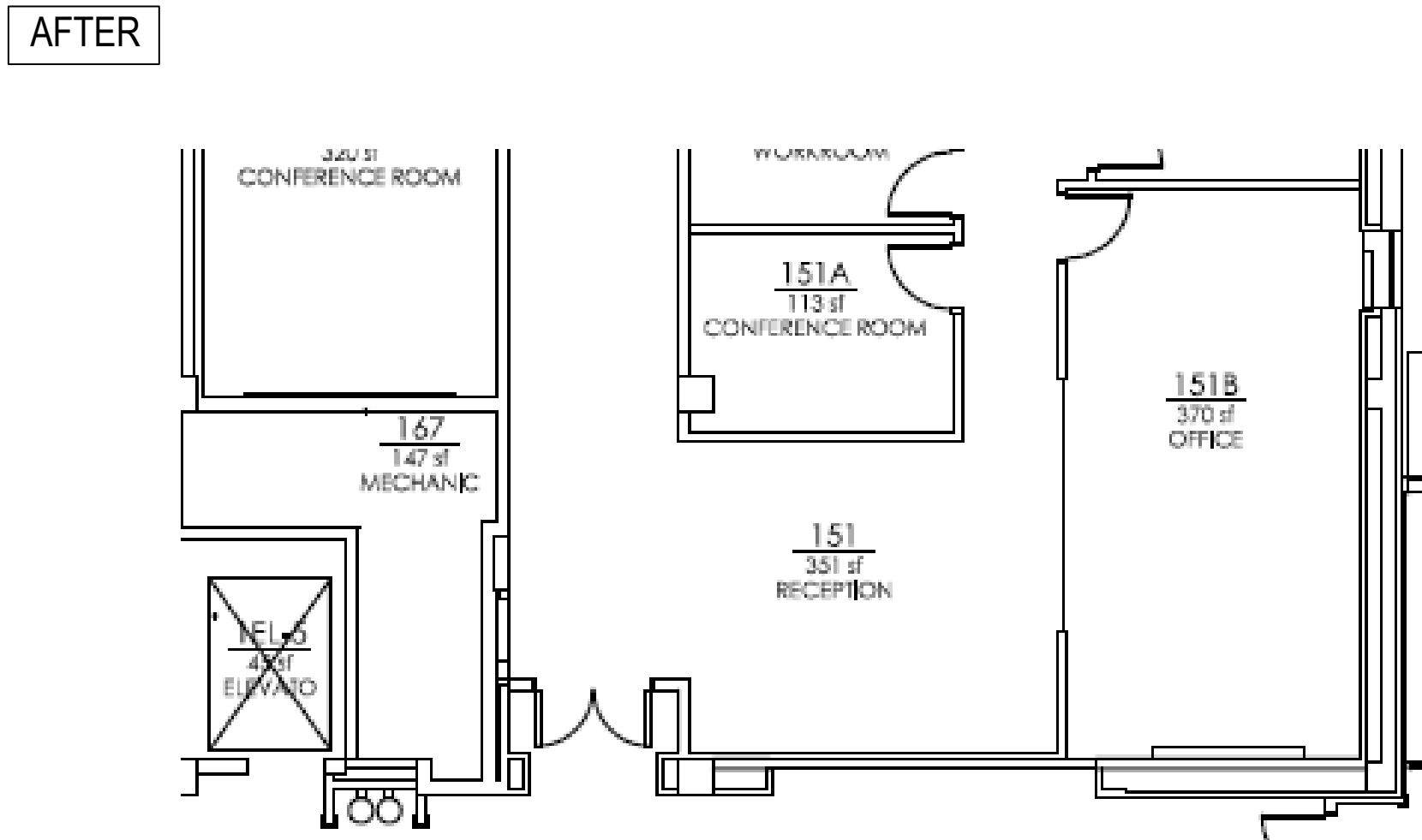
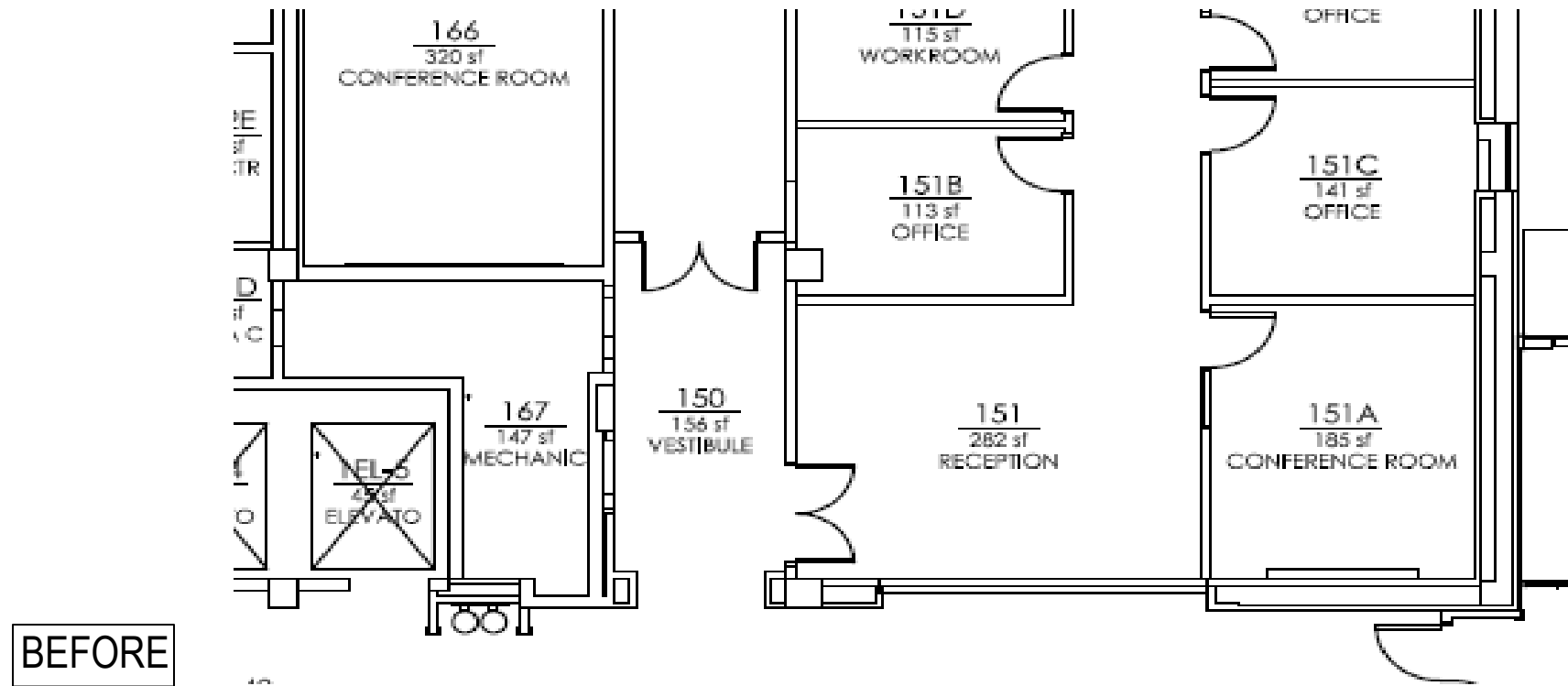


BEFORE

AFTER



Criss Hallway Refresh



Criss Hallway Refresh