

STUDENT LIFE & ACADEMICS UNDER 5,000 SQ.FT.

DESIGNER: Jennifer Catalano
EMAIL: jecatala@umich.edu
PHONE NUMBER: 734-647-2705
SCHOOL: University of Michigan

ARCHITECTURAL DESIGN FIRM: N/A

I HAVE RECEIVED PERMISSION FROM THE ARCHITECT FOR
USE OF PHOTOS OF THEIR WORK TO BE DISPLAYED ON THE
AUID WEBSITE: N/A

Photographers to be credited: Michigan Photography, Christina
Harrison Photography

THIS PAGE WILL NOT BE SHARED WITH THE JUDGES, PLEASE
DO NOT INCLUDE ANY FLOOR PLANS OR PHOTOS ON THIS
PAGE.

IN ORDER TO PRESERVE ANONYMITY WITH THE JUDGES,
THE IDENTITY OF YOUR NAME/INSTITUTION SHOULD NOT BE
IN YOUR DESIGN INTENT STATEMENT OR IN PHOTOS (WHERE
POSSIBLE).

PLEASE EMAIL POWER POINT ENTRY DOCUMENT TO AUID
DESIGN COMPETITION EMAIL:

info@auid.org

STUDENT LIFE & ACADEMICS

UNDER 5,000 SQ.FT.

PROJECT TITLE: Yuri Kochiyama Multicultural Lounge
SQUARE FOOTAGE: 1,200 SF

PROJECT STATEMENT:

Yuri Kochiyama, a Japanese American Civil Rights Activist, dedicated her life to many causes, including reparations for Japanese American internees, Black separatism, and the anti-war movement. Yuri fought to redress and make reparations to Japanese Americans who were interned like her own family by the government during WWII. In addition to advocating for Japanese Americans, Yuri was dedicated to advocacy across marginalized identities. In 1999, this multicultural lounge was created to honor the life of Yuri Kochiyama as a dedicated activist and advocate. This multicultural lounge celebrates Yuri Kochiyama's legacy of building bridges and advocacy for all communities of color and her dedication to social justice and human rights movements.

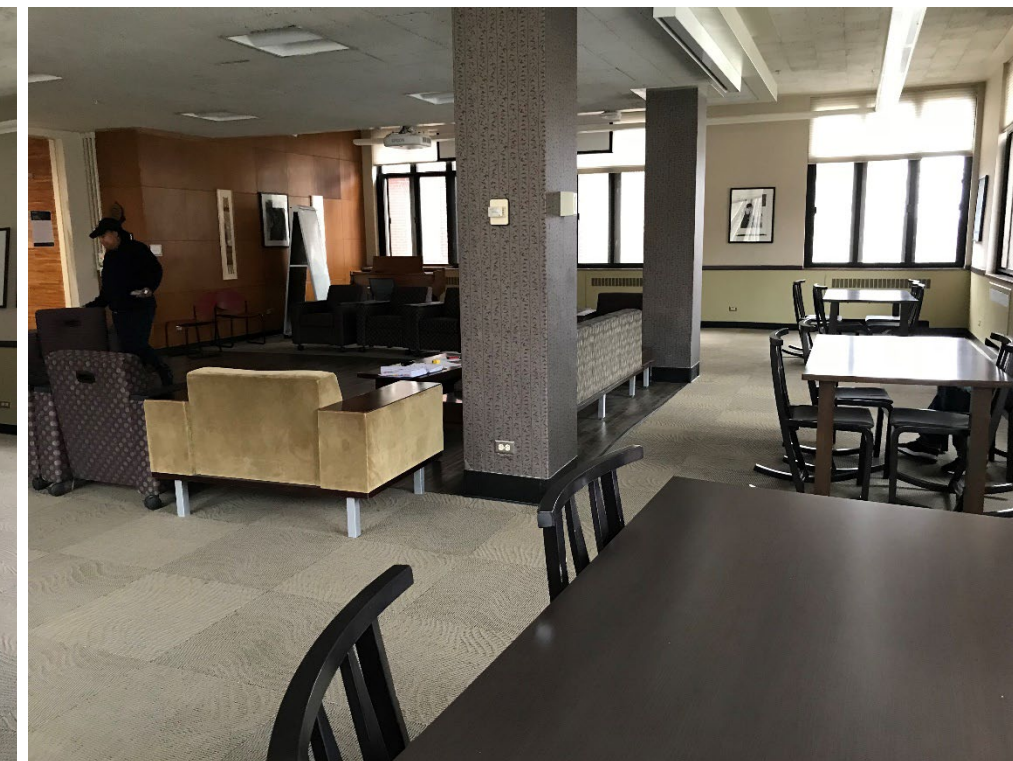
This space was last renovated over 20 years ago and needed a reimagined design. The existing space taught others little about Yuri Kochiyama and other Asian American activists. The existing furniture was heavy and hard to move and offered little access to power and technology. This project budget was \$365,000 which included an overall FF&E upgrade as well as adding air conditioning, upgraded AV/IT, and an updated ceiling and reimagined lighting for different programming. This space is also used as a liberal arts classroom so the wall graphics help enrich the messaging and storytelling that the class focuses on. The existing lounge lacked Yuri Kochiyama's story of advocacy as well as the student organization that shares the same values. It was important to physically tell these stories through graphics. These stories are now displayed through different wall graphics after many student organization feedback sessions, design showcases with students and thorough research. This space features work from Asian American artists, mock protest signs, vibrant colors and materials, flexible furniture, and interactive technology for students to learn more about other Multicultural Lounges and other activists.

ACCOMPLISHMENTS OR SPECIAL FEATURES:

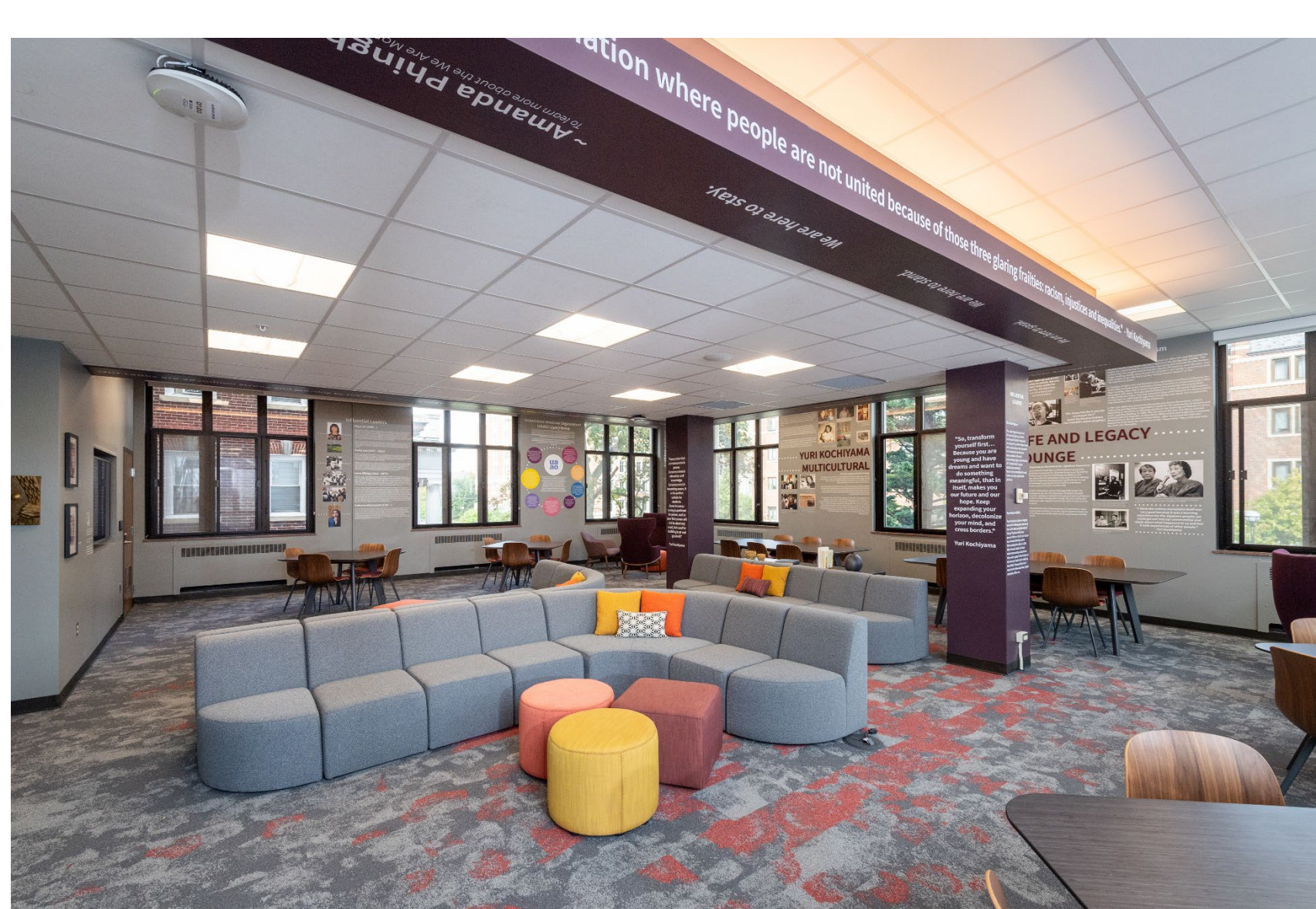
This space features an interactive touchscreen monitor that is specifically programmed for students to learn more about this Multicultural Lounge and the other spaces in their portfolio throughout Housing. This is a tool to tell more stories of activism, leaders, and announcements for the student organizations. Another unique feature of this space is the upgraded lighting to provide different levels of lighting throughout the space. There is a lot of natural daylight so it was important to install dimmable fixtures and cove lighting in the soffit to highlight the perimeter of the soffit. Another unique feature of this space is the mock protest signs. Since activism was such an important part of Yuri Kochiyama's life, we worked with our Sign Shop and Wood/Cabinetry shop to come up with a design of a picket/protest sign that we could hang on the wall. The words on those protest signs came directly from the students and they were able to vote on which ones resonated with them most. We used a substrate that was easily changeable so these words could change as students would like.



BEFORE



Yuri Kochiyama Multicultural Lounge



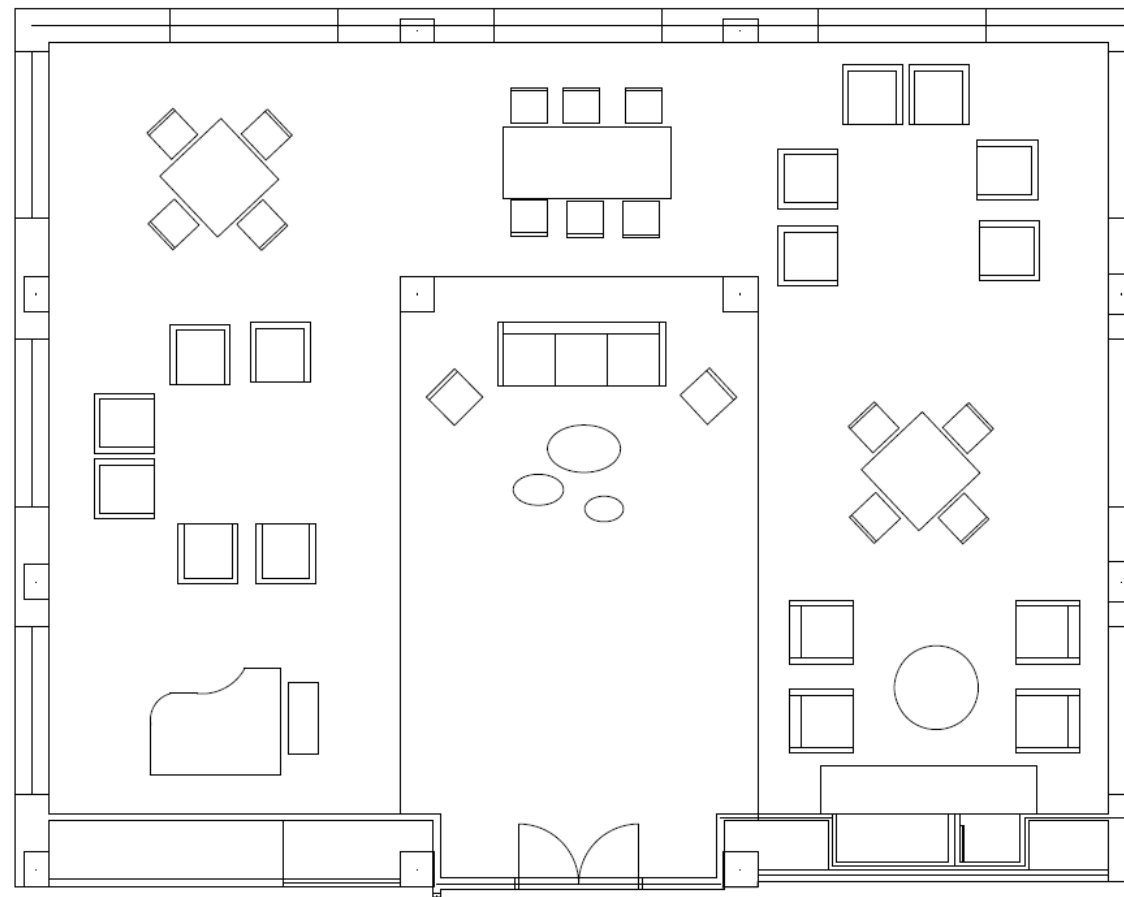
AFTER

Yuri Kochiyama Multicultural Lounge

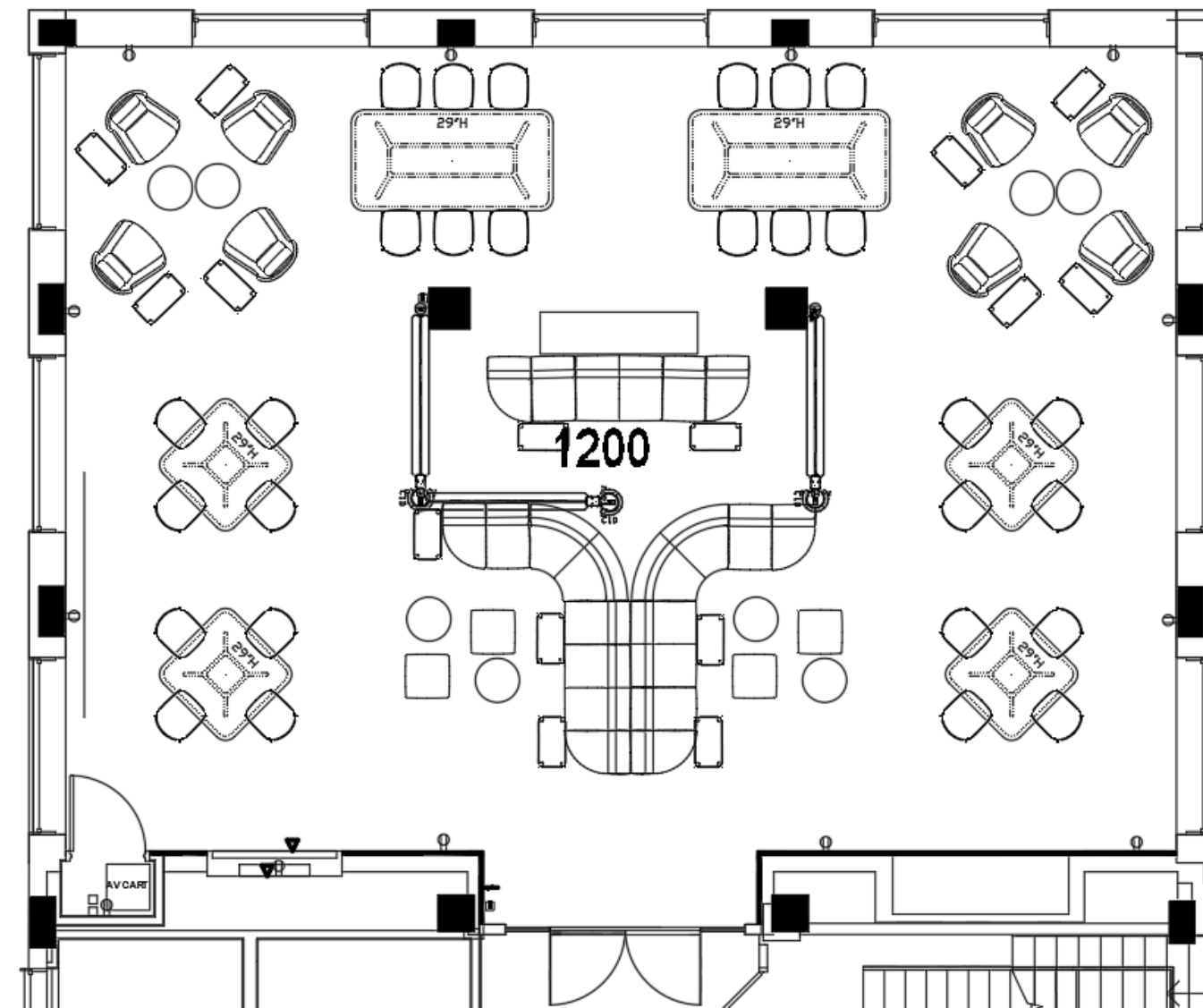
PORTION OF PROJECT DESIGNER IS RESPONSIBLE FOR:

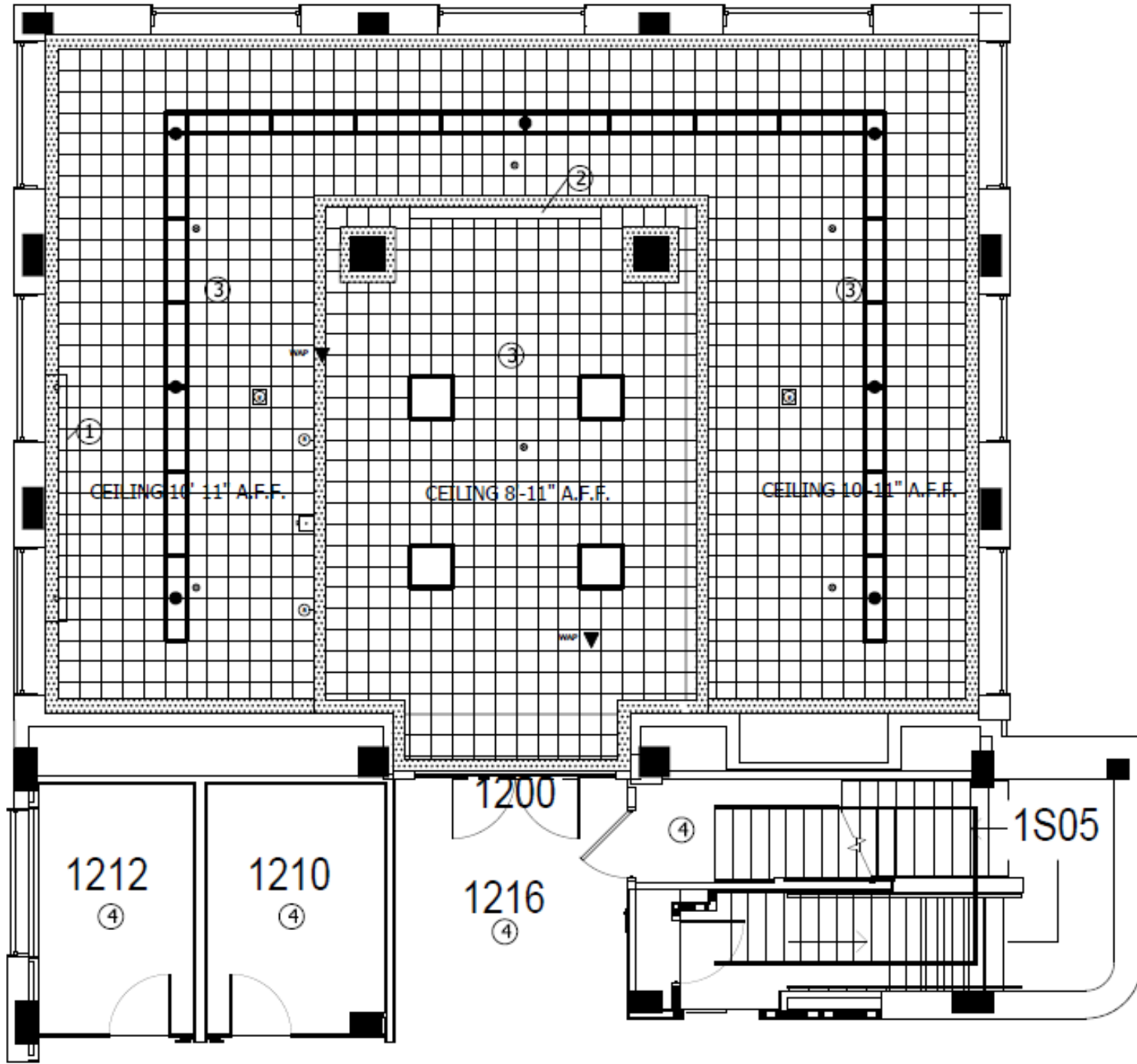
- PROGRAMMING
- BUDGET PREPARATION
- BUDGET MANAGEMENT
- SPACE PLANNING FURNITURE LAYOUT
- FURNITURE SPECIFICATION
- FINISH SPECIFICATION
- WINDOW TREATMENT SPECIFICATION
- GENERAL LIGHTING SPECIFICATION
- SPECIALTY LIGHTING SPECIFICATION
- WALL TREATMENT
- CEILING TREATMENT
- GENERAL SIGNAGE
- SPECIALTY SIGNAGE
- SPECIALTIES: GRAPHICS, ARTWORK
- PROJECT COORDINATION AND REVIEW

BEFORE - Furniture



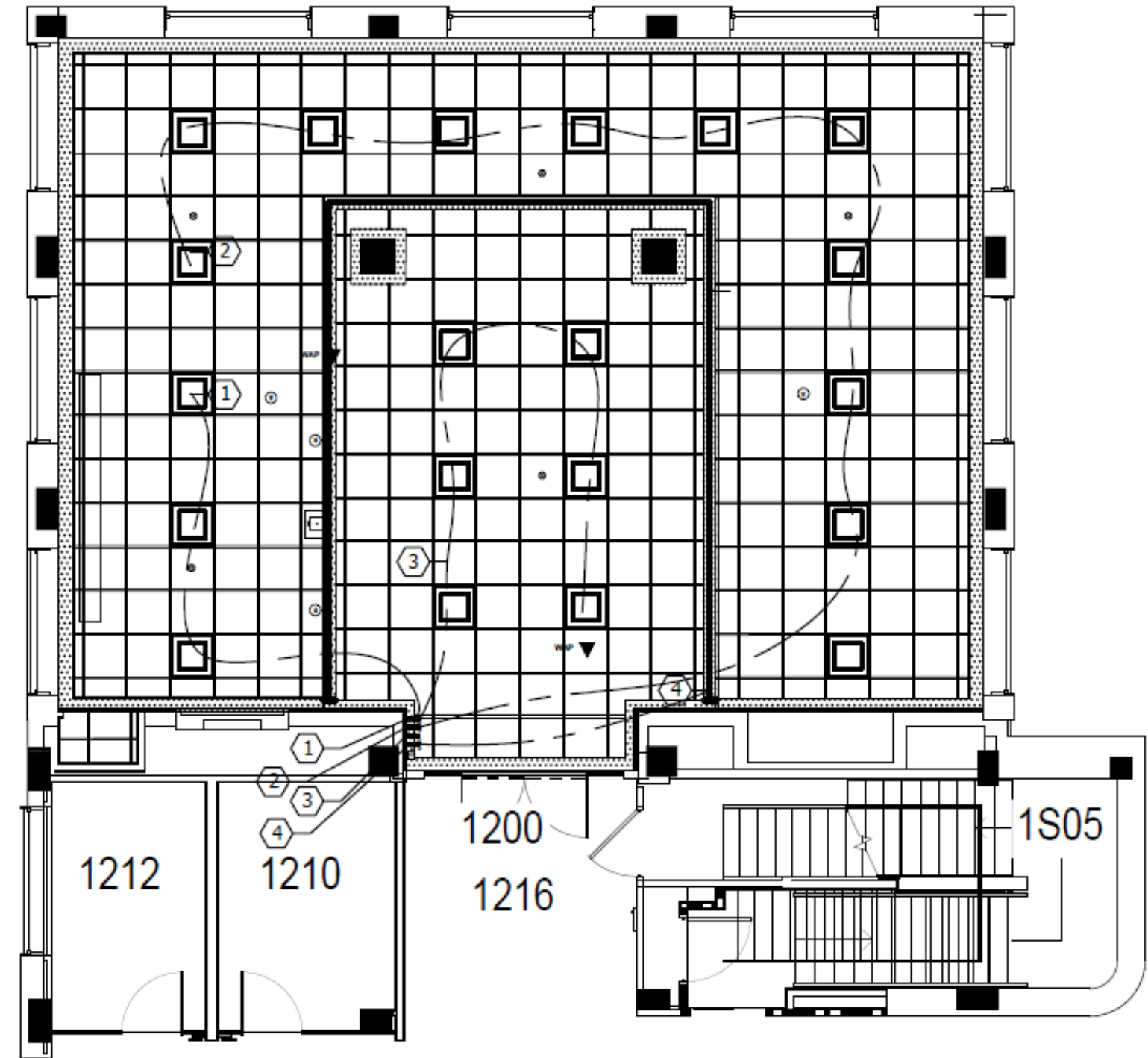
AFTER - Furniture





N
DEMOLITION CEILING PLAN
 SCALE: 1/8" = 1'-0"

BEFORE - RCP



N
NEW CEILING PLAN
 SCALE: 1/8" = 1'-0"

AFTER - RCP