

STUDENT LIFE & ACADEMICS UNDER 5,000 SQ.FT.

DESIGNER: Jennifer Catalano
EMAIL: jecatala@umich.edu
PHONE NUMBER: 734-647-2705
SCHOOL: University of Michigan

ARCHITECTURAL DESIGN FIRM: N/A

I HAVE RECEIVED PERMISSION FROM THE ARCHITECT FOR
USE OF PHOTOS OF THEIR WORK TO BE DISPLAYED ON THE
AUID WEBSITE: N/A

Photography Credit: Michigan Photography, Christina Harrison
Photography

THIS PAGE WILL NOT BE SHARED WITH THE JUDGES, PLEASE
DO NOT INCLUDE ANY FLOOR PLANS OR PHOTOS ON THIS
PAGE.

IN ORDER TO PRESERVE ANONYMITY WITH THE JUDGES,
THE IDENTITY OF YOUR NAME/INSTITUTION SHOULD NOT BE
IN YOUR DESIGN INTENT STATEMENT OR IN PHOTOS (WHERE
POSSIBLE).

PLEASE EMAIL POWER POINT ENTRY DOCUMENT TO AUID
DESIGN COMPETITION EMAIL:

info@auid.org

STUDENT LIFE & ACADEMICS UNDER 5,000 SQ.FT.

PROJECT TITLE: EDWARD SAID MULTICULTURAL LOUNGE
SQUARE FOOTAGE: 1,050 SF

PROJECT STATEMENT:

The Edward Said Lounge, originally dedicated in 2015, celebrates his contributions to humanities and to Arab American culture. Edward Said was born in Jerusalem in 1935 during the British Mandate of Palestine; growing up between Cairo and Jerusalem. Said's family was profoundly affected by conflicts in the region, beginning with the Arab - Israeli War of 1948 and he was sent to the United States where he became a world-renowned professor, scholar, and author. His best known book, Orientalism (1978), had a tremendous influence on literary studies and the social sciences and resonates to this day. This multicultural lounge is dedicated to Edward Said to celebrate his contributions to the humanities and Arab American culture.

This space was originally placed within an upper residential floor which had low visibility to regular student traffic and was underutilized. We were able to move this lounge to an unoccupied space off a main entrance to the quad which featured 18' ceilings and would double the square footage. This space was designed in partnership with Housing Diversity and Inclusion as well as two student organizations that represent this space. The student organizations expressed the need to represent Arab Americans in present-day images rather than in black and white. This space features portrait murals of Edward Said, and a gallery wall of modern art that depicts symbols and cultural depictions of Arabs. All artists used were local or global Arab or Arab Americans. The new space features a take on a traditional Arab living room layout, flexible furniture, rich color tones and textures, upgraded technology and wall graphics. This project budget was \$200,000 which included renovating the old lounge into a student floor lounge space, new FF&E for the new lounge space, artwork, and electrical and technology upgrades.

ACCOMPLISHMENTS OR SPECIAL FEATURES: (limit to 150 words or less)

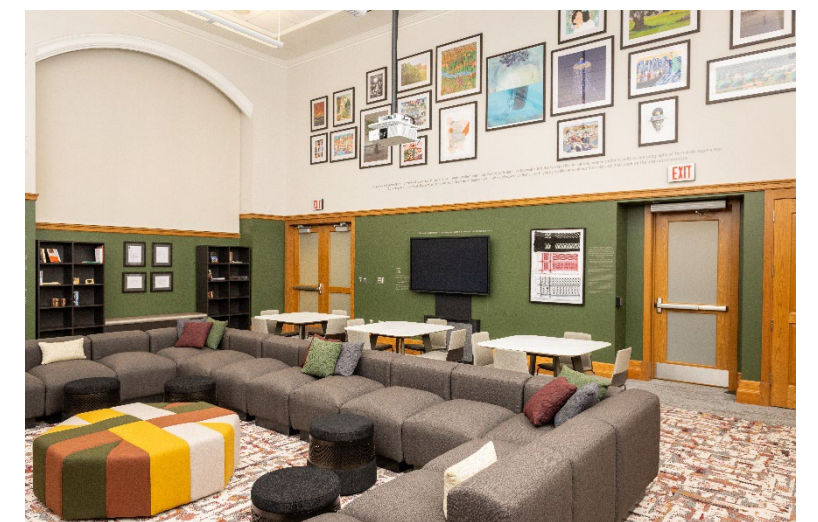
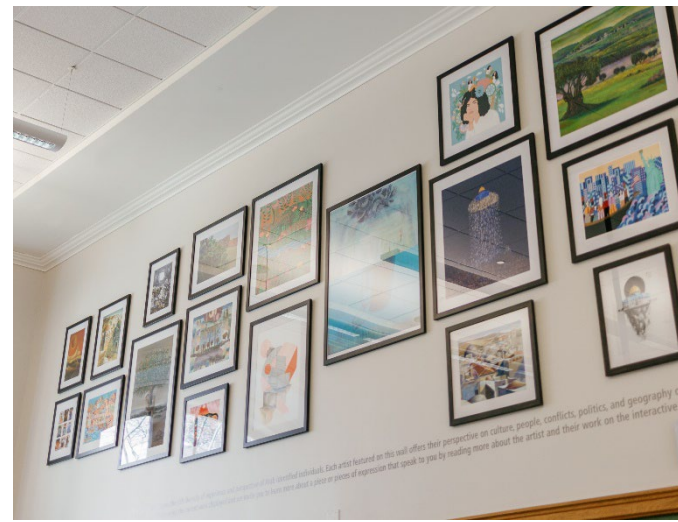
This lounge space has several special features. Among them are wall graphics that tell the story of Edward Said's life and accomplishments, a printed poem about Edward Said in Arabic, and a dedication to the student organizations that represent this lounge. It was important to provide students with more context on Edward Said's life and achievements. Additionally, the lounge has an interactive monitor that allows students to learn more about this space and other Multicultural Lounges within the Housing portfolio. The space also incorporates unique design features such as a special carpet design, colors, and pillow fabric selections that were chosen by students through multiple feedback sessions and voting. The colors and patterns used in the space are significant and representative of the student organization's culture.



BEFORE – EXISTING LOUNGE LOCATION



BEFORE – NEW LOUNGE LOCATION

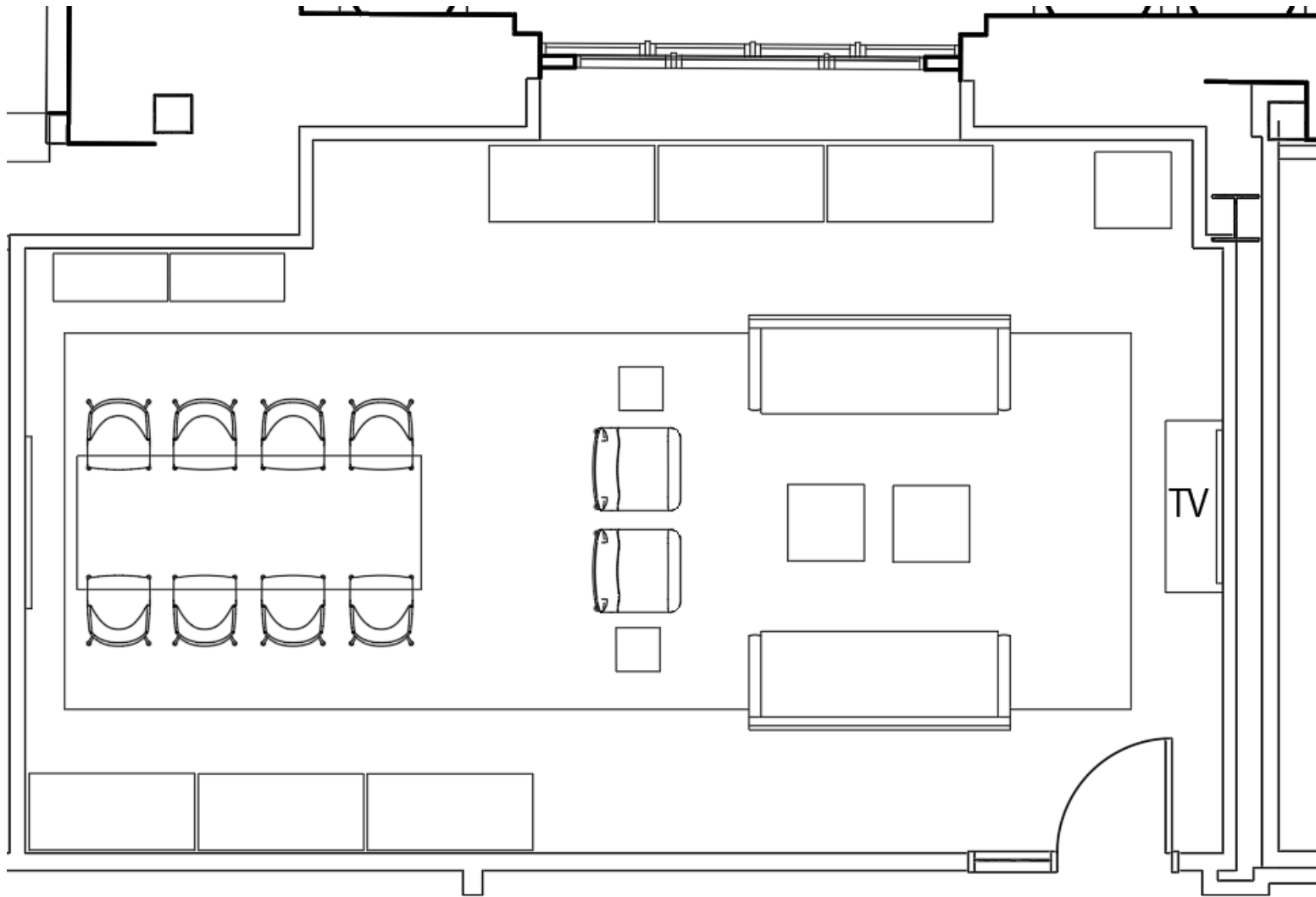


AFTER – NEW LOUNGE LOCATION

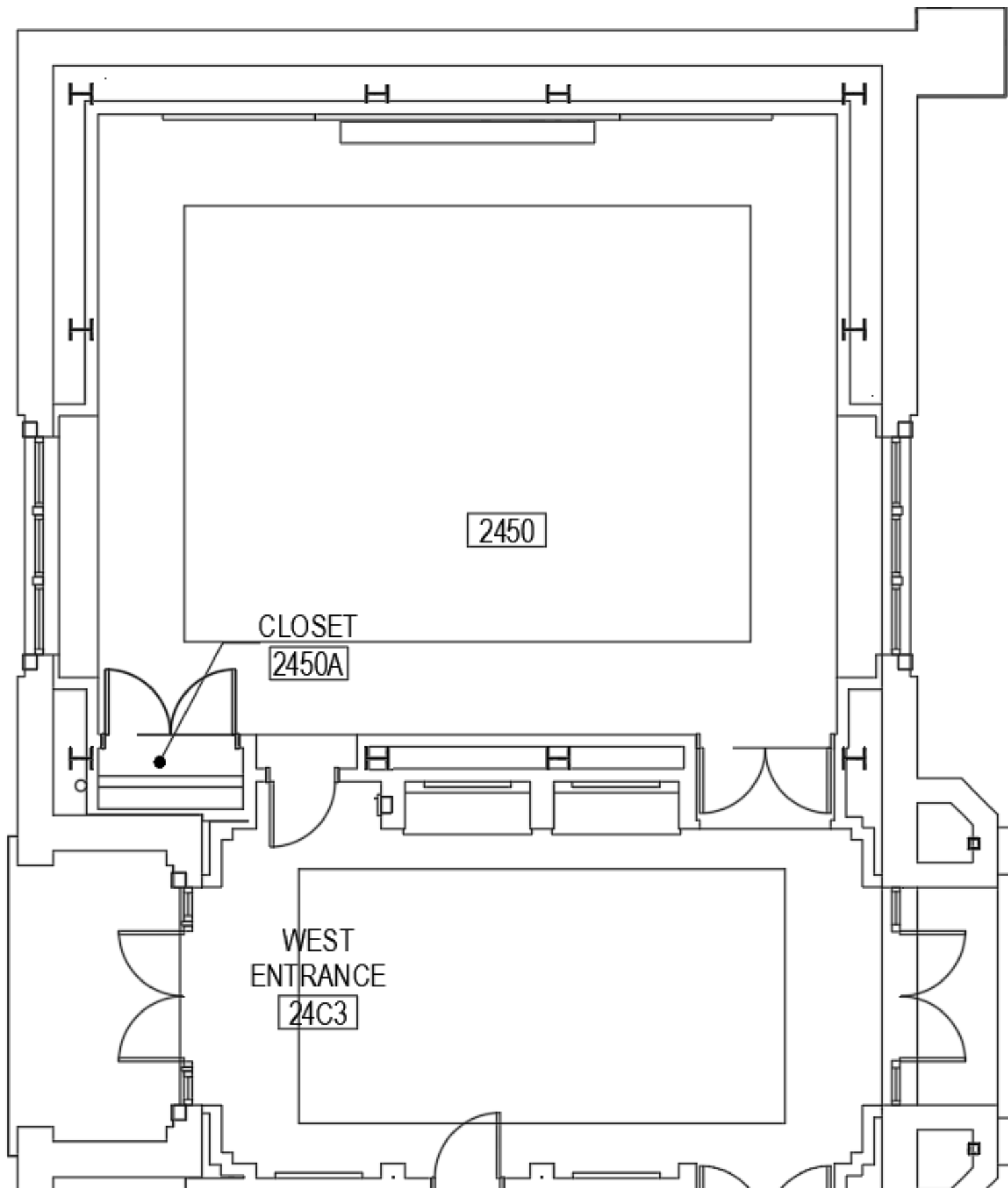
Edward Said Multicultural Lounge

PORTION OF PROJECT DESIGNER IS RESPONSIBLE FOR:

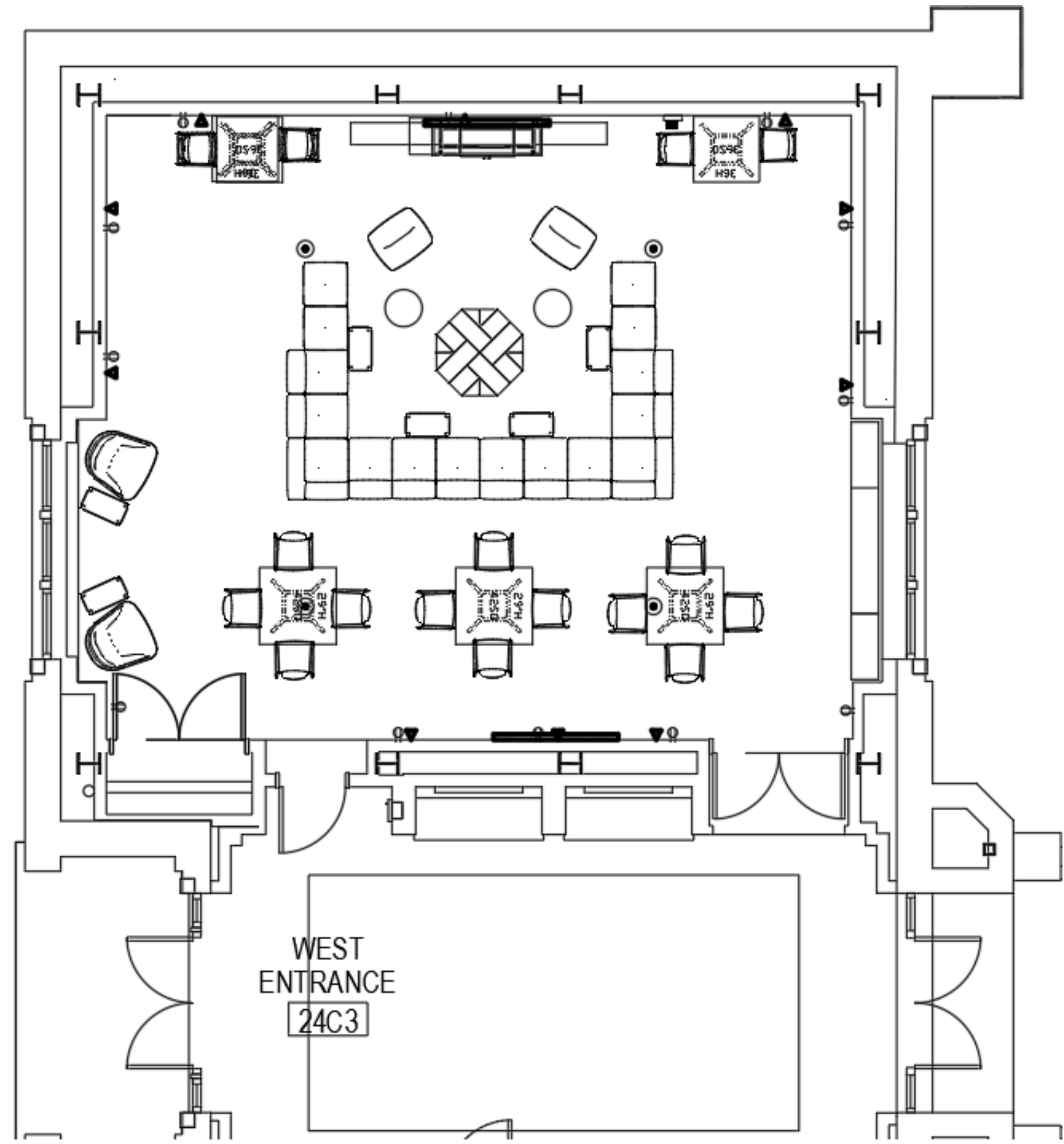
- PROGRAMMING
- BUDGET PREPARATION
- BUDGET MANAGEMENT
- SPACE PLANNING FURNITURE LAYOUT
- FURNITURE SPECIFICATION
- FINISH SPECIFICATION
- WINDOW TREATMENT SPECIFICATION
- WALL TREATMENT
- GENERAL SIGNAGE
- SPECIALTY SIGNAGE
- MILLWORK-CUSTOM CASE PIECE DESIGN - CUSTOM BOOKCASE/BENCH
- SPECIALTIES: GRAPHICS, ART, MURALS
- PROJECT COORDINATION AND REVIEW



BEFORE – EXISTING LOUNGE LOCATION



BEFORE – NEW LOUNGE LOCATION



AFTER – NEW LOUNGE LOCATION