

# STUDENT LIFE & ACADEMICS 5,000-20,000 SQ.FT.

DESIGNER: HOLLY HODGE & JENNY GONZALEZ  
EMAIL: HHODGE@ELON.EDU  
PHONE NUMBER: 336.675.9084  
SCHOOL: ELON UNIVERSITY

ARCHITECTURAL DESIGN FIRM: N/A

I HAVE RECEIVED PERMISSION FROM THE ARCHITECT FOR  
USE OF PHOTOS OF THEIR WORK TO BE DISPLAYED ON THE  
AUID WEBSITE: N/A

\*\*\*\*\*

THIS PAGE WILL NOT BE SHARED WITH THE JUDGES, PLEASE  
DO NOT INCLUDE ANY FLOOR PLANS OR PHOTOS ON THIS  
PAGE.

IN ORDER TO PRESERVE ANONYMITY WITH THE JUDGES,  
THE IDENTITY OF YOUR NAME/INSTITUTION SHOULD NOT BE  
IN YOUR DESIGN INTENT STATEMENT OR IN PHOTOS (WHERE  
POSSIBLE).

PLEASE EMAIL POWER POINT ENTRY DOCUMENT TO AUID  
DESIGN COMPETITION EMAIL:

[info@avid.org](mailto:info@avid.org)

\*\*\*\*\*

# STUDENT LIFE & ACADEMICS

## 5,000-20,000 SQ.FT.

### PROJECT TITLE: LAW SCHOOL LIBRARY

#### SQUARE FOOTAGE: 18,500 SF

**PROJECT STATEMENT:** (limit to 300 words or less, include budget in statement)

The Law School library furniture was worn, dated, and traditional both in design and function. Original to the establishment of the Law School in 2006, it was long overdue for an upgrade.

The budget for the Law School library refresh was \$400,000. New paint was not included, and the budget for carpet replacement only covered the open area of the lower level where the solid original carpet was bleached. The funding covered furniture as the main upgrade. Most of the furniture did not have power access, it lacked in variety of seating, and the overall layout was getting sparse as so many chairs had broken.

We introduced new concepts for study carrels -sit to stand, relaxed lounge, and a variety of seating types.

**ACCOMPLISHMENTS OR SPECIAL FEATURES:** (limit to 150 words or less)

The new furniture package includes a mix of lounge pieces ranging from club chairs with arms wide enough to double as a laptop table, to loveseats, to high-backed contemporary privacy lounge chairs. Large powered parsons tables with task chairs provide places for group work and study. A portion of the existing traditional study carrels remain for those who like them, and several new alternatives were installed to allow for different study styles. Steelcase Brody WorkLounge chairs and study pods line both ends of the library. Upstairs on the mezzanine, height-adjustable desks with felt privacy surrounds enhance the acoustics, provide privacy, and support ergonomic and different user study styles. In addition, rarely used club chairs on the mezzanine were replaced with powered banquettes.



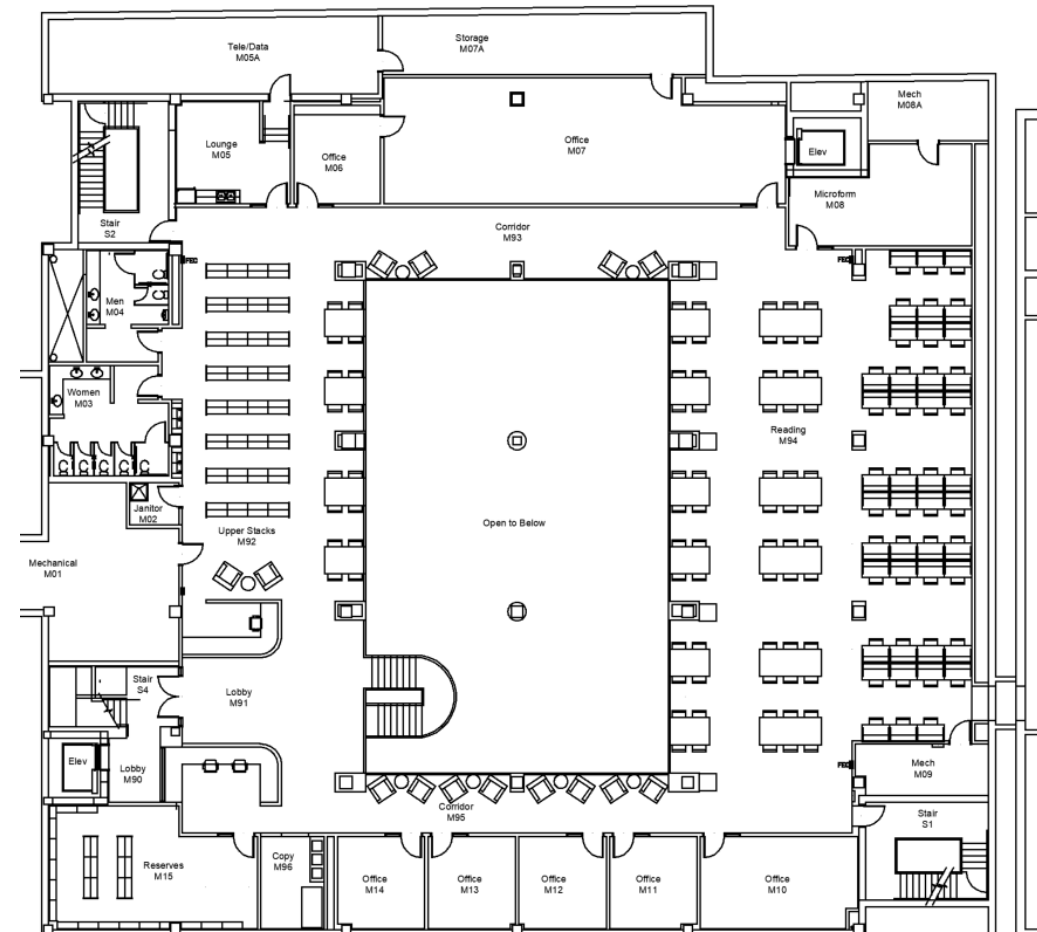
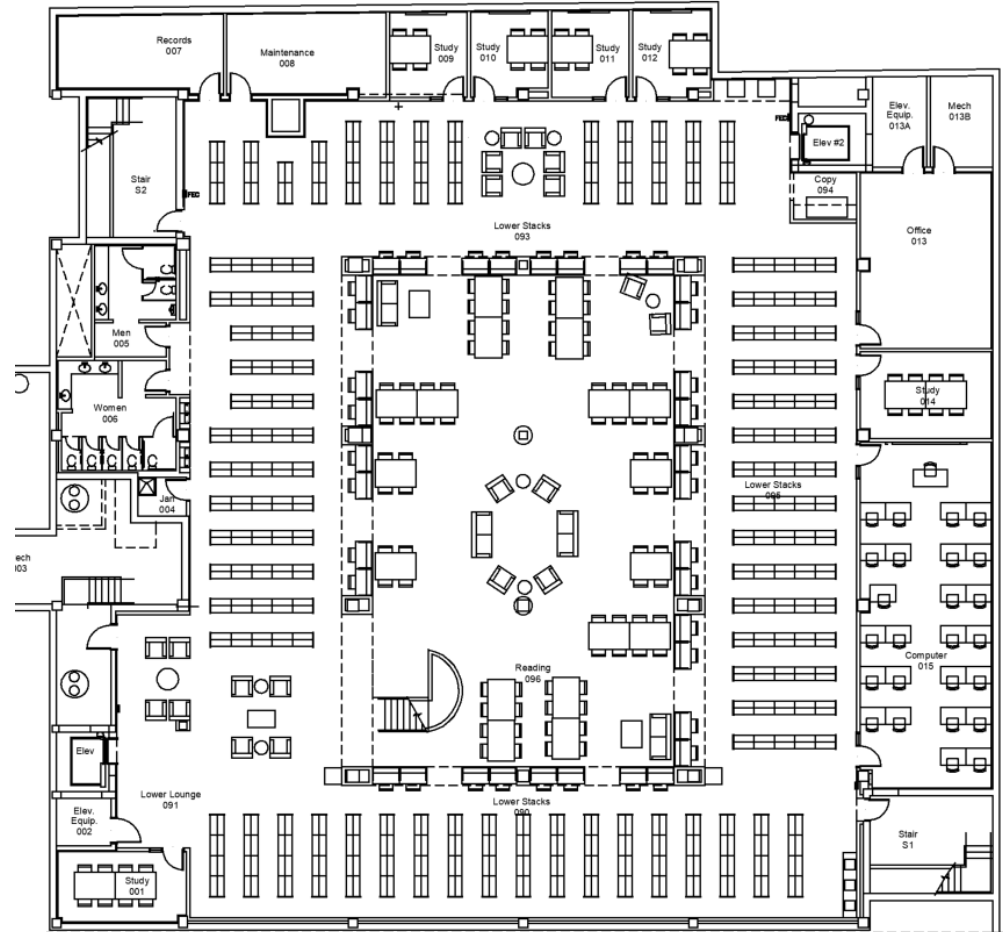
LAW SCHOOL LIBRARY

BEFORE

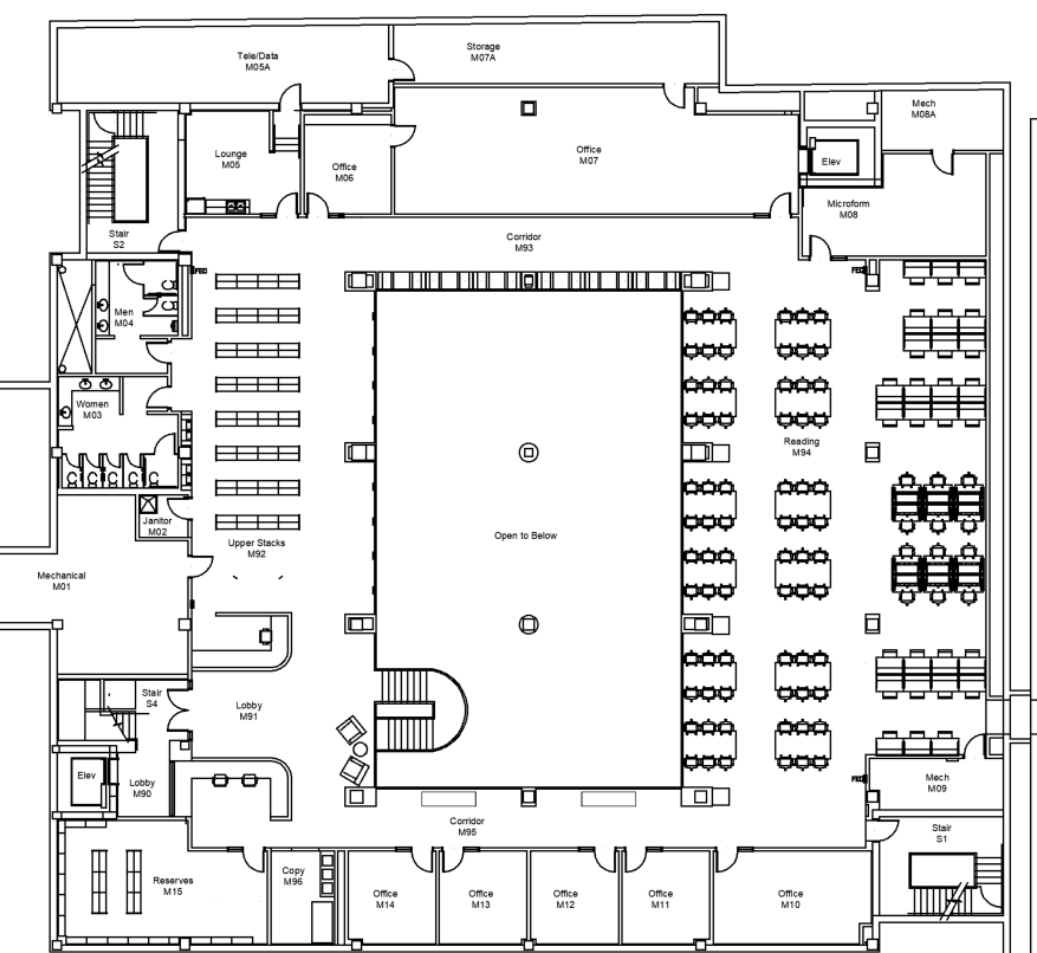
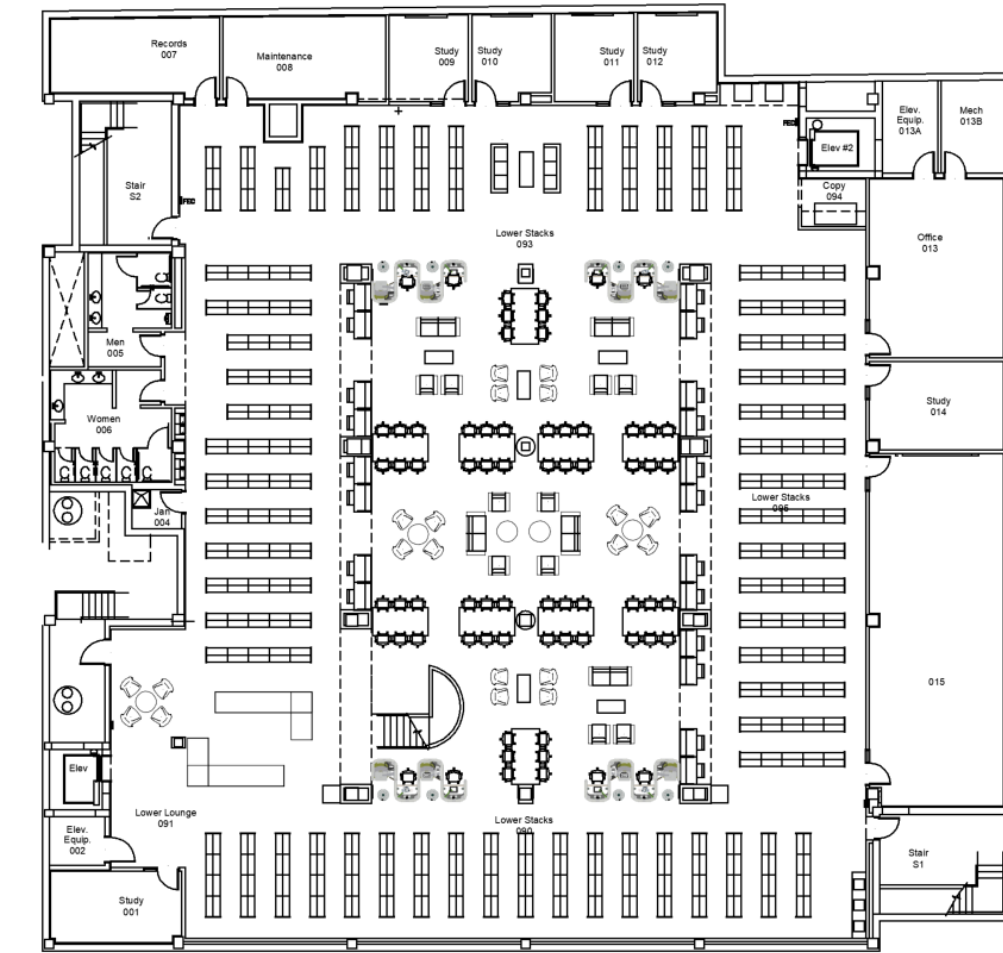


**PORTION OF PROJECT DESIGNER IS RESPONSIBLE FOR:**

- PROGRAMMING
- BUDGET PREPARATION
- BUDGET MANAGEMENT
- SPACE PLANNING FURNITURE LAYOUT
- FURNITURE SPECIFICATION
- FINISH SPECIFICATION
- PROJECT COORDINATION AND REVIEW



**BEFORE**



**AFTER**





LAW SCHOOL LIBRARY