

SPECIALTY

DESIGNER: Whitley Grey

EMAIL: whitley.grey@wheaton.edu

PHONE NUMBER: 630-752-5596

SCHOOL: Wheaton College

ARCHITECTURAL DESIGN FIRM: Wheaton College- In House
Design team

**I HAVE RECEIVED PERMISSION FROM THE ARCHITECT FOR
USE OF PHOTOS OF THEIR WORK TO BE DISPLAYED ON THE
AUID WEBSITE:** Yes

THIS PAGE WILL NOT BE SHARED WITH THE JUDGES, PLEASE
DO NOT INCLUDE ANY FLOOR PLANS OR PHOTOS ON THIS
PAGE.

IN ORDER TO PRESERVE ANONYMITY WITH THE JUDGES,
THE IDENTITY OF YOUR NAME/INSTITUTION SHOULD NOT BE
IN YOUR DESIGN INTENT STATEMENT OR IN PHOTOS (WHERE
POSSIBLE).

PLEASE EMAIL POWER POINT ENTRY DOCUMENT TO AUID
DESIGN COMPETITION EMAIL:

info@auid.org

SPECIALTY

PROJECT TITLE: Kierkegaard Reading Room
SQUARE FOOTAGE: 900 SF

PROJECT STATEMENT:

With an all-in budget of \$150,000, we set out to create a distinctive reading room where students could access a donated collection of Soren Kierkegaard's profound works. The location of the collection landed in our flagship building, Blanchard Hall, within the Philosophy suite. To achieve this vision, we embarked on an ambitious endeavor that involved demolishing an oddly-shaped office space, not only to provide the required square footage but also to infuse the room with the beauty of natural light.

The project was skillfully designed by our in-house design team and included the following: demolishing one office, right-sizing a second office, an entirely new acoustic ceiling tiles, upgraded LED lighting via new chandeliers and can lights, wood floor, custom designed millwork, new lounge furniture, and new furniture layouts for the department reception and neighboring offices.

The millwork design was a meticulous blend of elements drawn from the building's existing architectural details and inspired by motifs found elsewhere on campus. Notably, we drew from the raised panel millwork and stain color in our Welcome Center. By artfully harmonizing these millwork elements, stain and paint palettes, our design encapsulated several iconic campus features, reimagined in a fresh and elevated manner, thereby creating a captivating jewel at the heart of our institution.

Pilasters and an existing column support a new faux beam that gracefully separates the reading room space from the rest of the office suite. This addition not only adds a sense of grandeur but also signals that this space is the hallowed repository for our cherished book collection.

Two cozy seating areas act as informal meeting spots to support the offices that border the space, as well as a comfortable landing spot for students to sit and study, relax, or investigate the collection.

The project was completed in approximately 14 weeks.

ACCOMPLISHMENTS OR SPECIAL FEATURES:

Custom designed millwork with a blend of campus elements
Incorporating natural light into interior spaces
Providing student lounge space within densely planned building



BEFORE- Photo 1



BEFORE- Photo 2



AFTER

Kierkegaard Reading Room



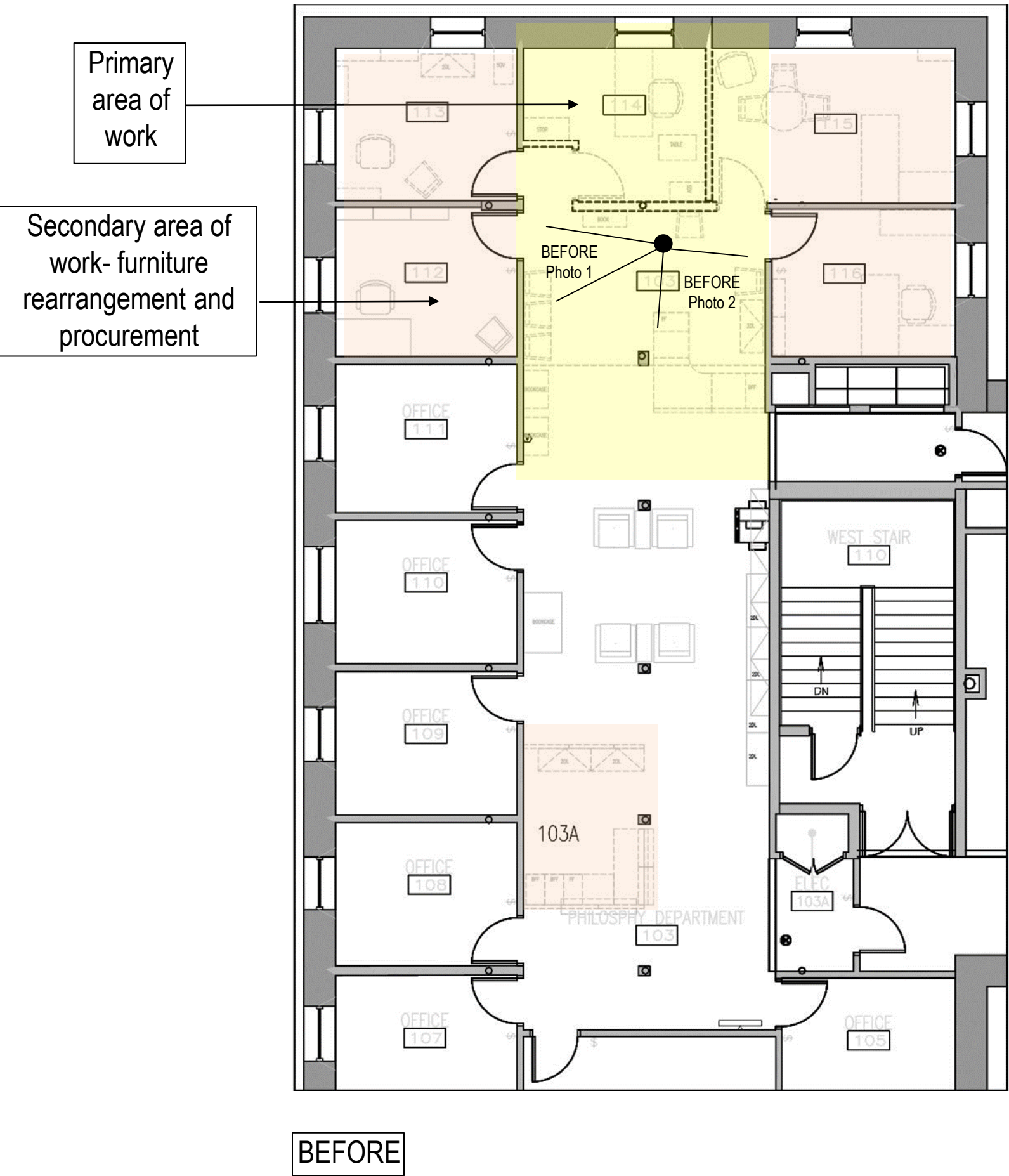
AFTER



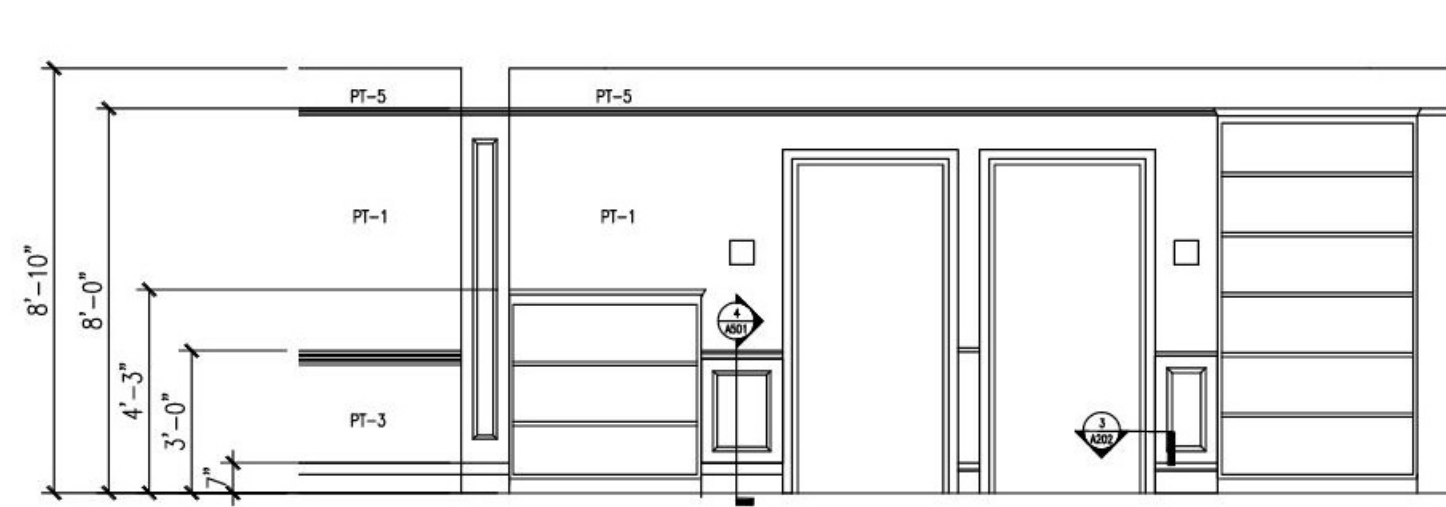
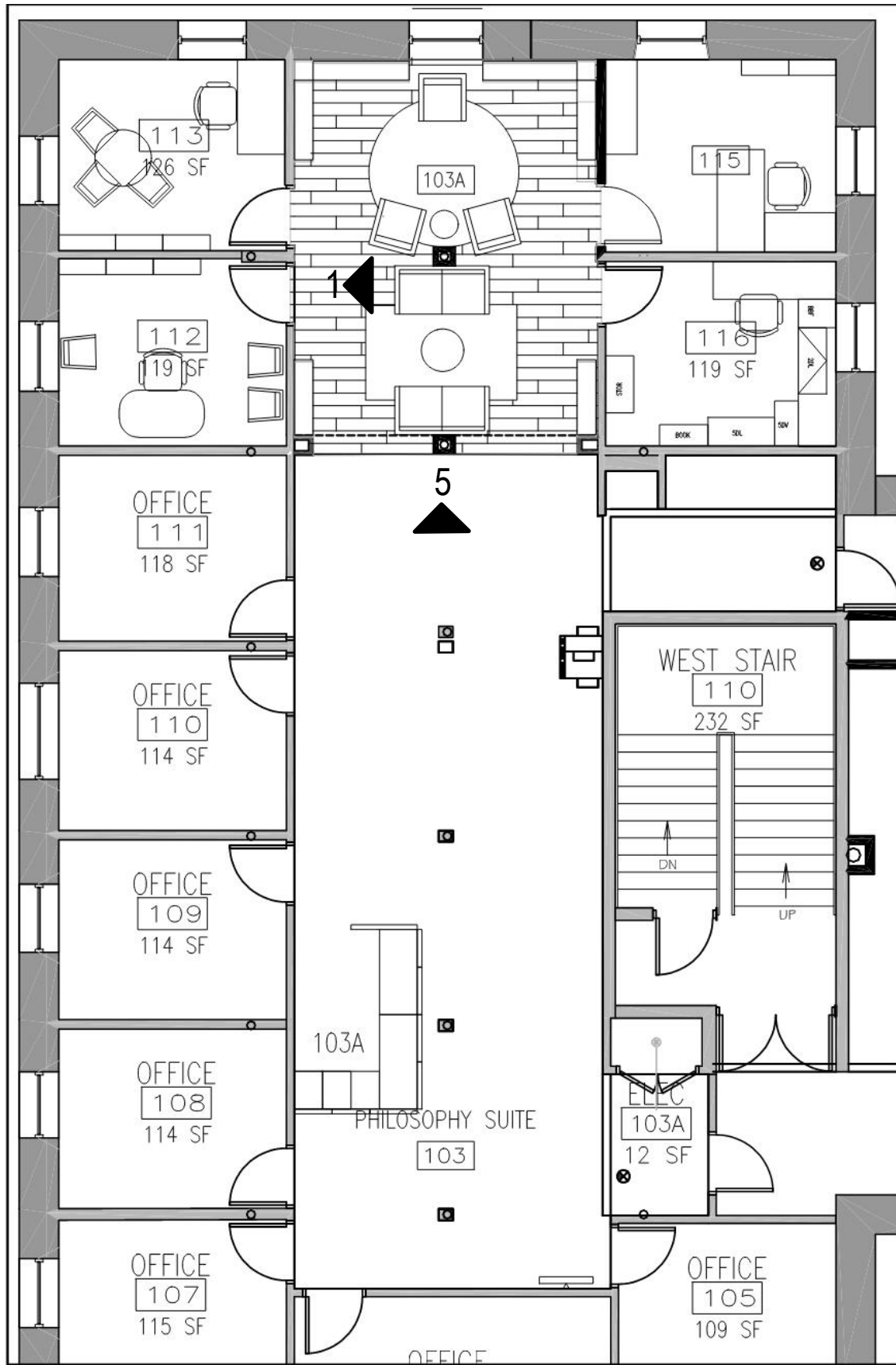
Kierkegaard Reading Room

PORTION OF PROJECT DESIGNER IS RESPONSIBLE FOR:

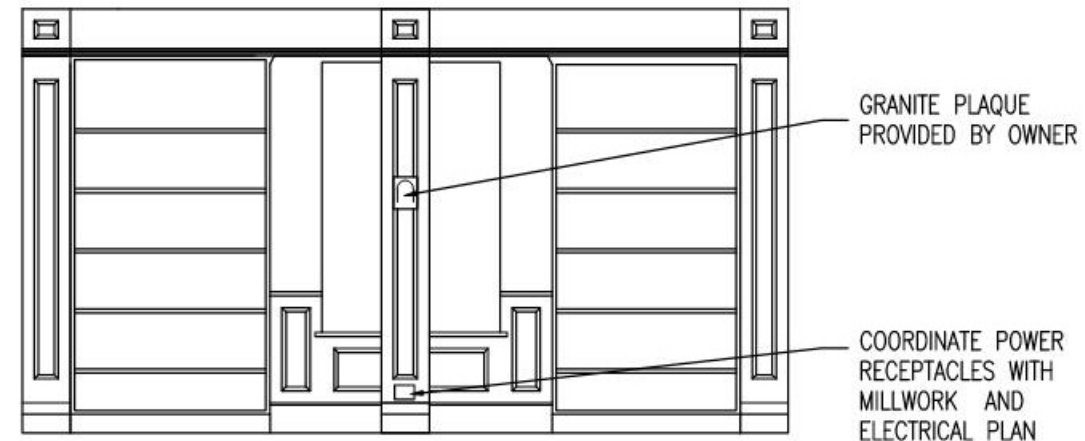
- PROGRAMMING
- SPACE PLANNING FURNITURE LAYOUT
- FURNITURE SPECIFICATION
- FINISH SPECIFICATION
- WINDOW TREATMENT SPECIFICATION
- GENERAL LIGHTING SPECIFICATION
- SPECIALTY LIGHTING SPECIFICATION
- WALL TREATMENT
- CEILING TREATMENT
- GENERAL SIGNAGE
- SPECIALTY SIGNAGE
- MILLWORK-CUSTOM CASE PIECE DESIGN
- PROJECT COORDINATION AND REVIEW
- PROJECT COORDINATION ONLY



Kierkegaard Reading Room



① 103A EAST/WEST ELEVATION
1/4" = 1'-0"



② 103A ELEVATION LOOKING NORTH
1/4" = 1'-0"

AFTER