

**MISCELLANEOUS CAMPUS  
SPACES  
UNDER 5,000 SQ.FT.**

**DESIGNER: WHITNEY BROCK  
EMAIL: WHITNEYBROCK@AUBURN.EDU  
PHONE NUMBER: 334-740-7103  
SCHOOL: AUBURN UNIVERSITY**

I HAVE RECEIVED PERMISSION FROM THE ARCHITECT FOR  
USE OF PHOTOS OF THEIR WORK TO BE DISPLAYED ON THE  
AUID WEBSITE: NO

\*\*\*\*\*

THIS PAGE WILL NOT BE SHARED WITH THE JUDGES, PLEASE  
DO NOT INCLUDE ANY FLOOR PLANS OR PHOTOS ON THIS  
PAGE.

IN ORDER TO PRESERVE ANONYMITY WITH THE JUDGES,  
THE IDENTITY OF YOUR NAME/INSTITUTION SHOULD NOT BE  
IN YOUR DESIGN INTENT STATEMENT OR IN PHOTOS (WHERE  
POSSIBLE).

PLEASE EMAIL POWER POINT ENTRY DOCUMENT TO AUID  
DESIGN COMPETITION EMAIL:

[info@aid.org](mailto:info@aid.org)

\*\*\*\*\*

## MISCELLANEOUS CAMPUS SPACES UNDER 5,000 SQ.FT.

PROJECT TITLE: WASHINGTON, D.C. SUITE

SQUARE FOOTAGE: 1,500

PROJECT BUDGET: \$75,000

DID YOU WORK WITH AN OUTSIDE FIRM OR CONSULTANT? IF

YES, LIST COMPANY NAME: NO

### PROJECT DESCRIPTION:

Our university has a new office near Capitol Hill. The building and its interiors are modern while our iconic campus designs are more neoclassic/Georgian. Our leadership wanted a space that was on brand, sophisticated, and blended the more modern styling of the building with our more classic feel of our main campus.

We had two rooms that we addressed in this project: the reception area and breakroom. Since this building is access controlled, we felt that the reception desk and small waiting area did not fit the need of the space and reimagined the space. We made an inviting lounge space that was heavily branded in our colors. The furniture lends itself to the more modern items in the building, but the art and lamps are more refined. We had a custom rug made in our branded colors. The breakroom was reimagined as an executive suite where there is a place to relax, a place to eat, and a smaller dining table that could also be used as a breakaway meeting space. We still used branded colors, but more relaxed than the reception area.

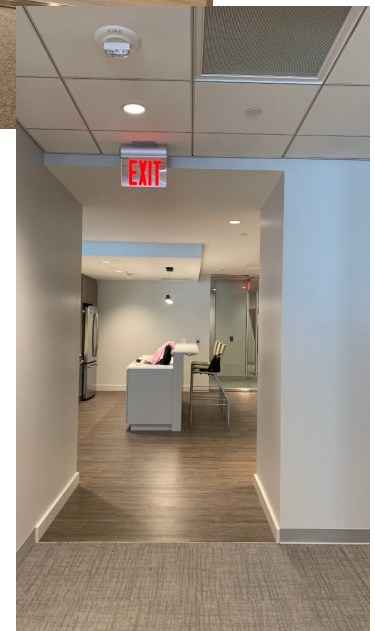
Our final nod to tie in our main campus and the D.C. area was to add a more traditional collection of line art of iconic buildings from both our campus and D.C. in the hallway back into the office and conference areas.

*At the time of photos, the plants and accessories had not been installed.*



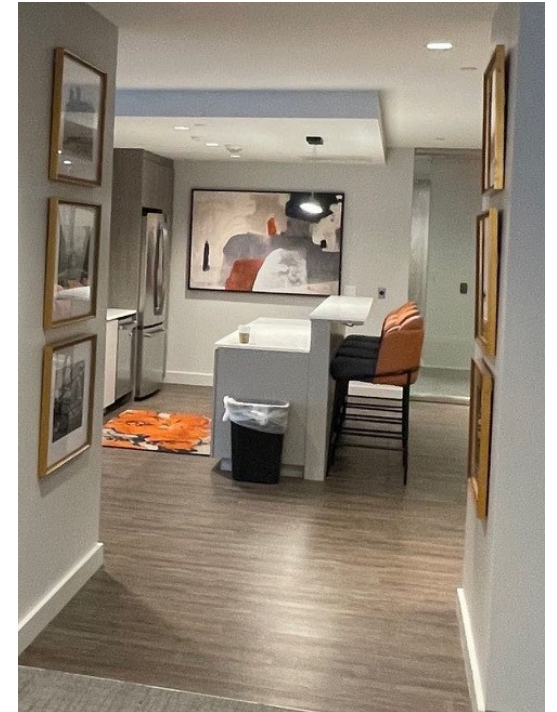
BEFORE

Picture from Corridor:  
Breakroom on left, Reception on right.



View from office area  
into breakroom.

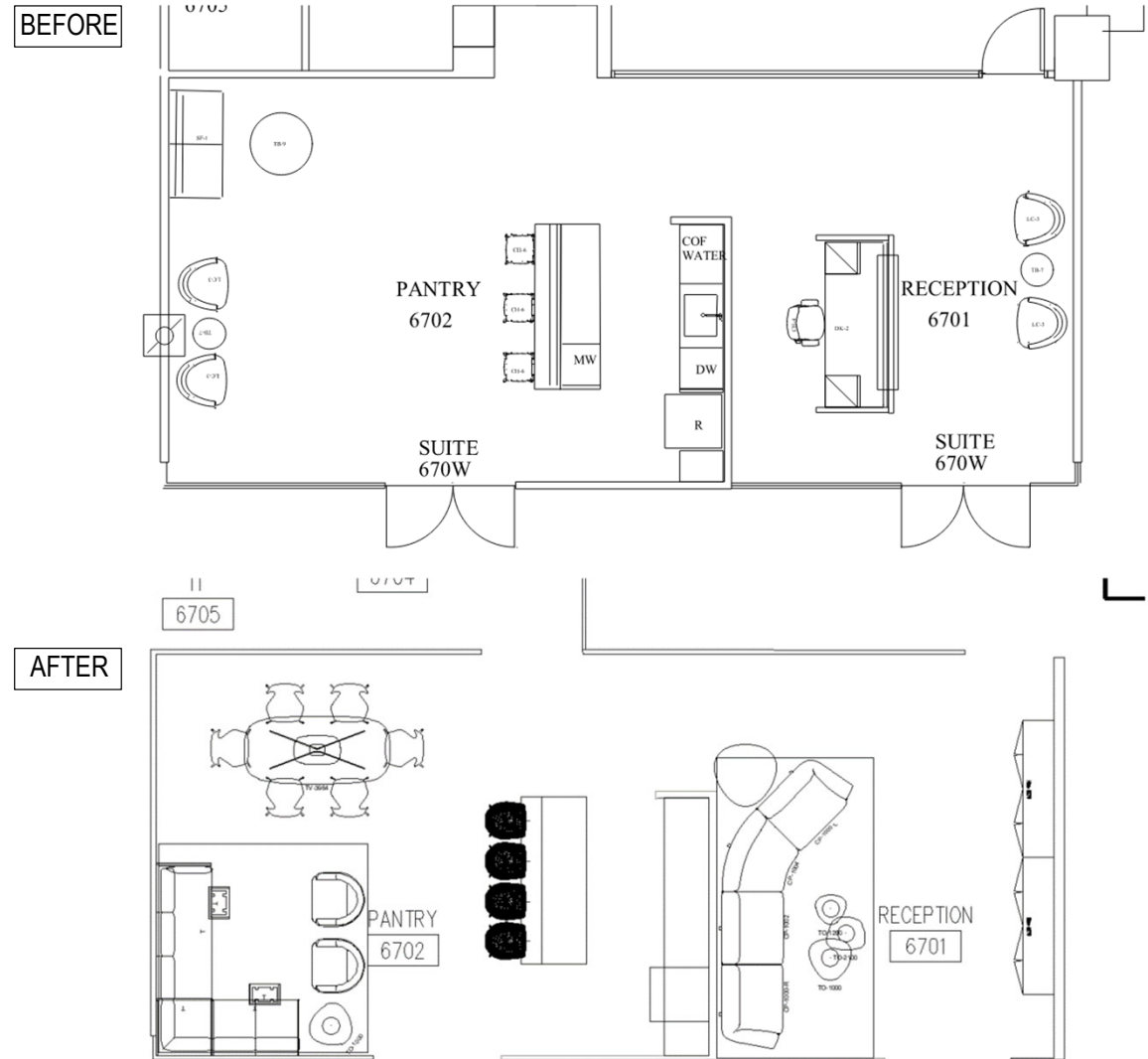
Washington, D.C. Suite



Washington, D.C. Suite

**PORTION OF PROJECT DESIGNER IS RESPONSIBLE FOR:**

- PROGRAMMING
- BUDGET PREPARATION
- BUDGET MANAGEMENT
- SPACE PLANNING FURNITURE LAYOUT
- FURNITURE SPECIFICATION
- FINISH SPECIFICATION
- WALL TREATMENT
- SPECIALTY SIGNAGE
- MILLWORK-CUSTOM CASE PIECE DESIGN
- SPECIALTIES: CUSTOM ART and FRAMING, ACCESSORIES,  
CUSTOM RUG
- PROJECT COORDINATION AND REVIEW



Washington, D.C. Suite