

MISCELLANEOUS CAMPUS SPACES UNDER 5,000 SQ.FT.

DESIGNER: Stefanie Locklear
EMAIL: stefan8@vt.edu
PHONE NUMBER: 540-231-2028
SCHOOL: Virginia Tech

I HAVE RECEIVED PERMISSION FROM THE ARCHITECT FOR USE OF PHOTOS OF THEIR WORK TO BE DISPLAYED ON THE AUID WEBSITE: No architect was used on this project, VT gives permission for use of photos on the AUID website

THIS PAGE WILL NOT BE SHARED WITH THE JUDGES, PLEASE DO NOT INCLUDE ANY FLOOR PLANS OR PHOTOS ON THIS PAGE.

IN ORDER TO PRESERVE ANONYMITY WITH THE JUDGES, THE IDENTITY OF YOUR NAME/INSTITUTION SHOULD NOT BE IN YOUR DESIGN INTENT STATEMENT OR IN PHOTOS (WHERE POSSIBLE).

PLEASE EMAIL POWER POINT ENTRY DOCUMENT TO AUID DESIGN COMPETITION EMAIL:

info@aid.org

MISCELLANEOUS CAMPUS SPACES UNDER 5,000 SQ.FT.

PROJECT TITLE: Visitor and Undergraduate Admissions Center

SQUARE FOOTAGE: 1,850

PROJECT BUDGET: \$240,000

DID YOU WORK WITH AN OUTSIDE FIRM OR CONSULTANT? IF

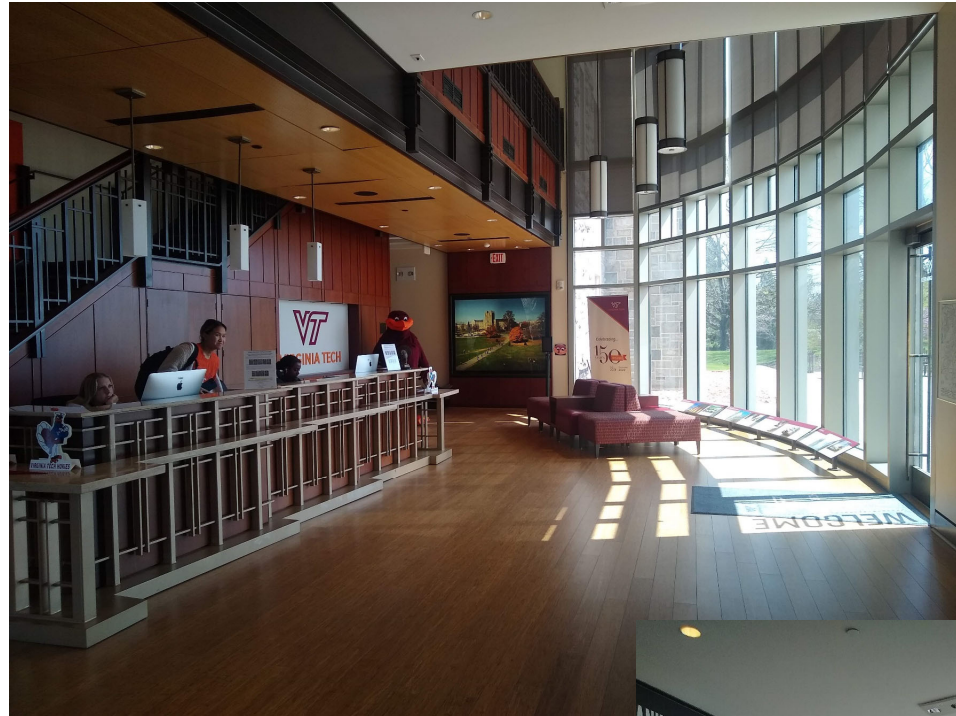
YES, LIST COMPANY NAME: Yes, Barrows Inc was the furniture dealer who acted as a consultant

The Visitor and Undergraduate Admissions Center is a prime building on our campus as it is usually the first interior parents and potential students experience first. It is here where tours and orientations begin, so we wanted this space to be eye-catching, memorable, and spilling over with our brand. There was also some damage to the existing bamboo floor where water had infiltrated the space, causing warping, cupping, and gapping.

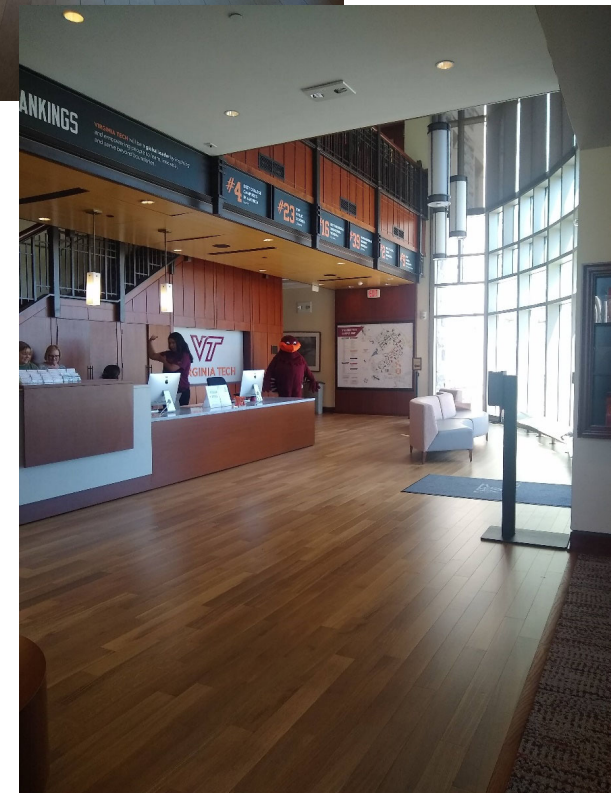
I facilitated finish selection and furniture selection, including the creation of a custom front desk, with the help of a local dealer. The desk component was important as we wanted to add more storage and create more ADA areas. We replaced the flooring, both hardwood and carpet, and fixed the large transition between the two surfaces which to make it ADA compliant. Finally, we make the furniture more functional for the space and visitors. We created different types of seating groups for further accessibility and comfort: tables and chairs, lounge pieces, high backs for more private conversations, larger pieces to accommodate many people and different body types, and open spaces for photo opportunities.

The end users have loved the upgrade so much that they are anxious to replace carpet and furniture in their adjoining event space.

Visitor and Undergraduate Admissions Center



BEFORE



AFTER



BEFORE

AFTER



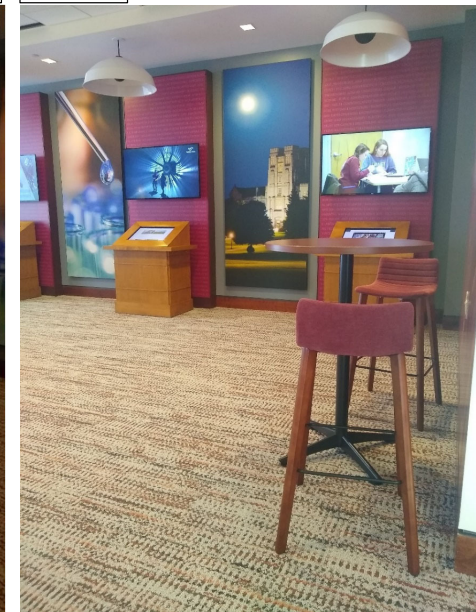
BEFORE

AFTER



AFTER

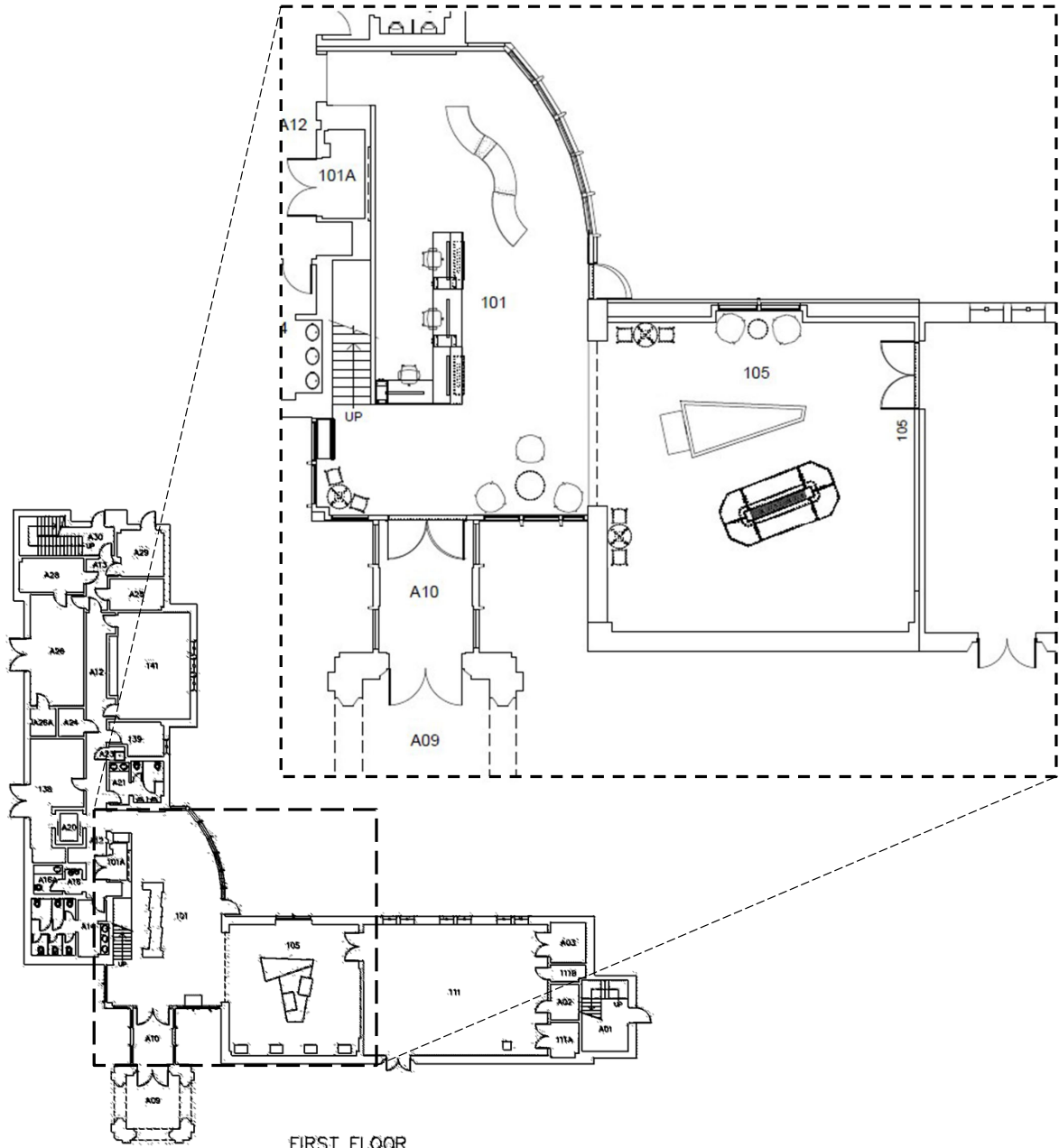
AFTER



Visitor and Undergraduate Admissions Center

PORTION OF PROJECT DESIGNER IS RESPONSIBLE FOR:

- PROGRAMMING
 - SPACE PLANNING FURNITURE LAYOUT
 - FURNITURE SPECIFICATION
 - FINISH SPECIFICATION
 - SPECIALTIES: CUSTOM DETAILS
 - Coordinated the threshold detail between the carpet and hardwood to make the height difference less severe and ADA compliant
- PROJECT COORDINATION AND REVIEW



Visitor and Undergraduate Admissions Center