

STUDENT LIFE & ACADEMICS OVER 20,000 SQ.FT.

DESIGNER: HOLLY HODGE & JENNY GONZALEZ

EMAIL: hhodge@elon.edu

PHONE NUMBER: 336.675.9084

SCHOOL: ELON UNIVERSITY

I HAVE RECEIVED PERMISSION FROM THE ARCHITECT FOR
USE OF PHOTOS OF THEIR WORK TO BE DISPLAYED ON THE
AUID WEBSITE: YES

THIS PAGE WILL NOT BE SHARED WITH THE JUDGES, PLEASE
DO NOT INCLUDE ANY FLOOR PLANS OR PHOTOS ON THIS
PAGE.

IN ORDER TO PRESERVE ANONYMITY WITH THE JUDGES,
THE IDENTITY OF YOUR NAME/INSTITUTION SHOULD NOT BE
IN YOUR DESIGN INTENT STATEMENT OR IN PHOTOS (WHERE
POSSIBLE).

PLEASE EMAIL POWER POINT ENTRY DOCUMENT TO AUID
DESIGN COMPETITION EMAIL:

info@avid.org

STUDENT LIFE & ACADEMICS OVER 20,000 SQ.FT.

PROJECT TITLE: EAST NEIGHBORHOOD COMMONS

SQUARE FOOTAGE: 45,000SF

PROJECT BUDGET: \$23.6 MILLION

DID YOU WORK WITH AN OUTSIDE FIRM OR CONSULTANT? IF YES, LIST COMPANY NAME: YES, AYERS SAINT GROSS

PROJECT DESCRIPTION:

The new East Neighborhood Commons opened in Fall 2024 to our first-year students. The three-story, 45,000-square-foot building houses 90 residential rooms, faculty/staff apartments and office space for the neighborhood office. The commons includes a “forum,” a large multipurpose room for class, meetings and social events. The lower level includes amenities for the East Neighborhood such as a community kitchen and lounge area, and outdoor entertaining patio.

The building serves as a residential hub for Civic Engagement and Social Innovation where students gain a greater awareness of social, cultural and political issues through engagement with faculty and staff, as well as speakers and events hosted in the forum.

Light wood tones and warm neutrals are accented with pops of bright colors in common areas through paint, furniture, and custom graphics. Because this serves as both a residence hall and a neighborhood commons space, we used the custom graphic to ground the space and highlight the iconic buildings of the university as the graphic wraps from the commons space into the residential space.

AFTER



East Neighborhood Commons

AFTER



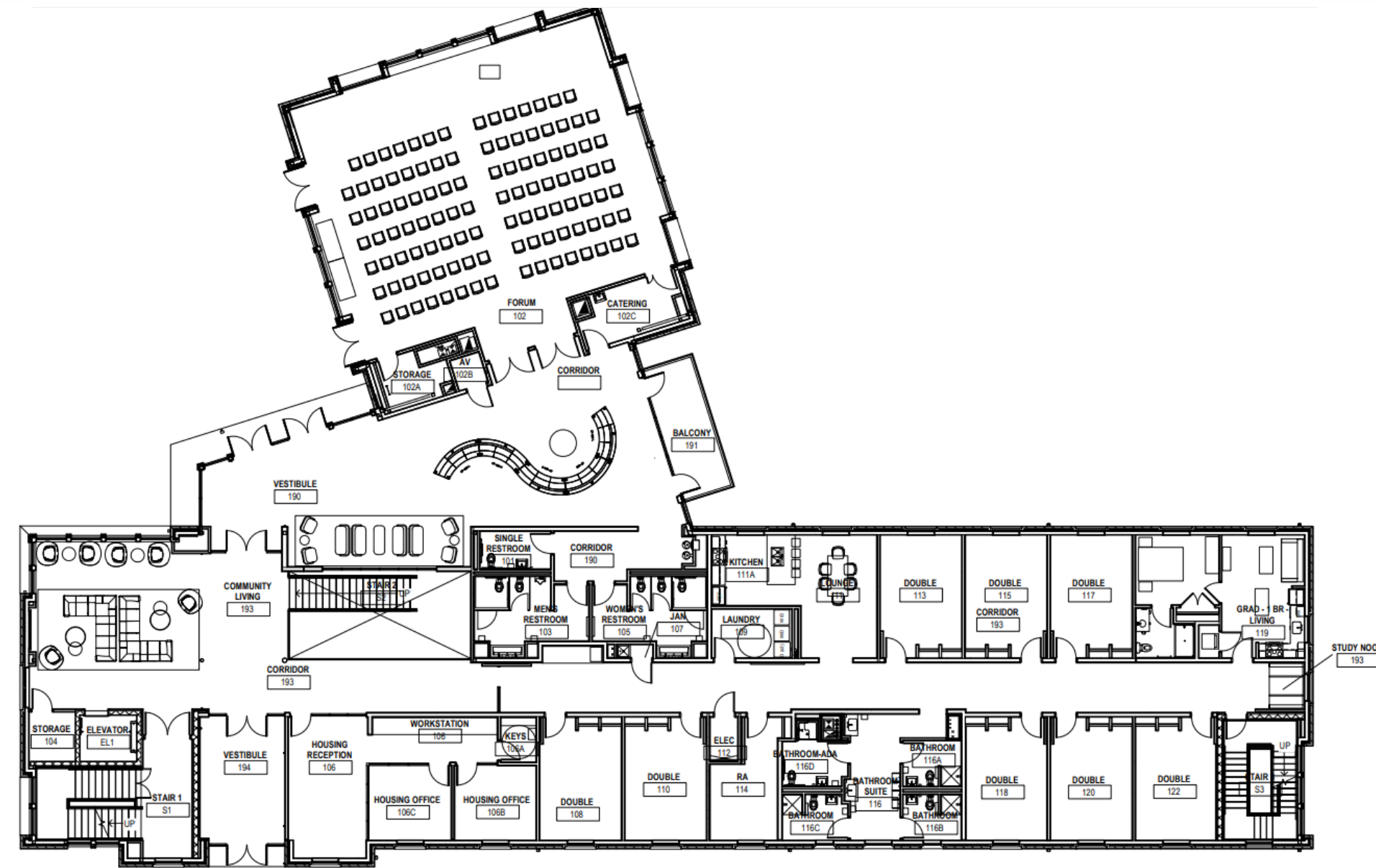
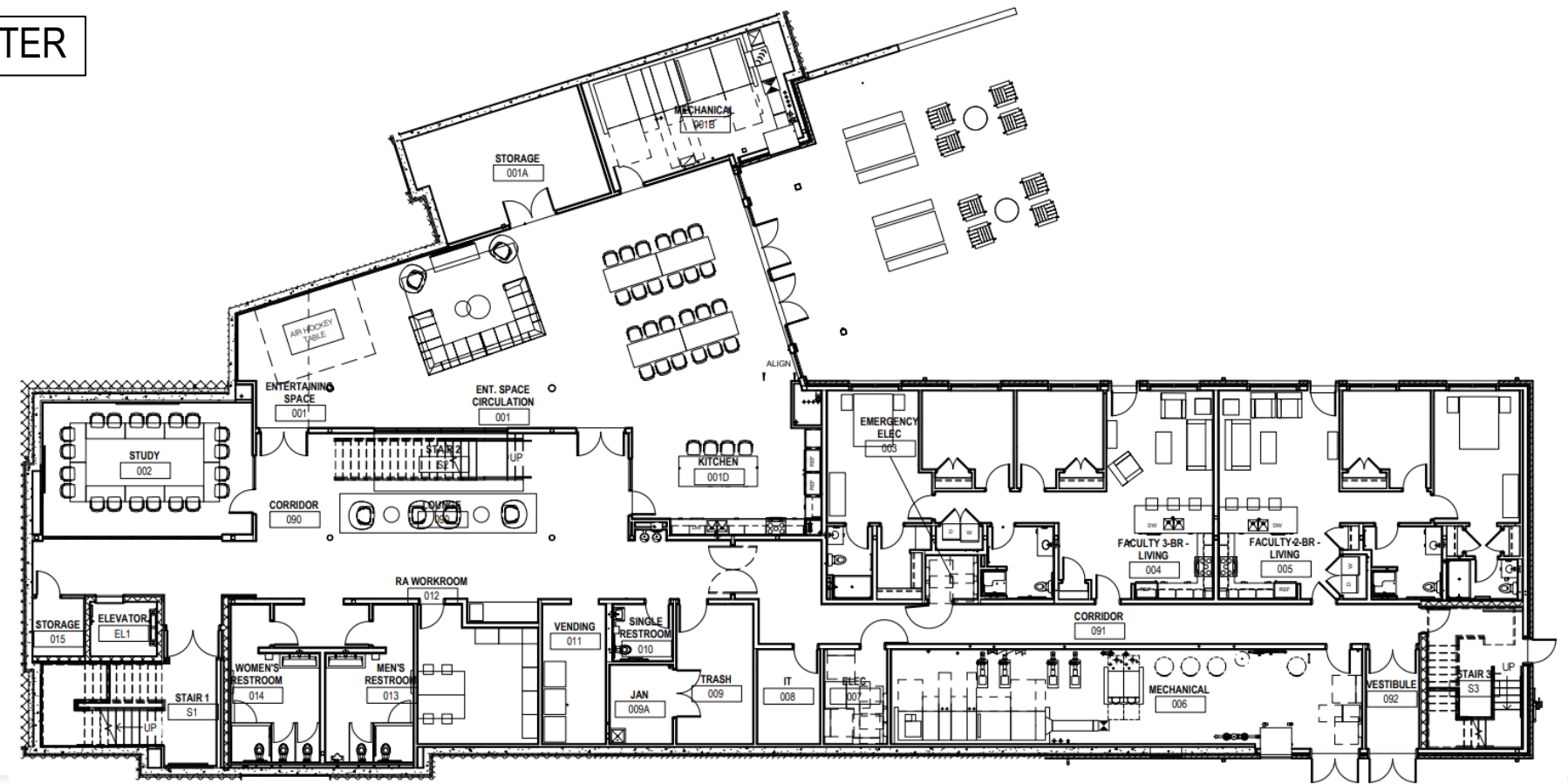
East Neighborhood Commons

PORTION OF PROJECT DESIGNER IS RESPONSIBLE FOR:

- BUDGET PREPARATION
- BUDGET MANAGEMENT
- SPACE PLANNING FURNITURE LAYOUT
- FURNITURE SPECIFICATION
- FINISH SPECIFICATION
- WINDOW TREATMENT SPECIFICATION
- WALL TREATMENT
- CEILING TREATMENT
- GENERAL SIGNAGE
- SPECIALTY SIGNAGE
- SPECIALTIES: CUSTOM DETAILS INCLUDE CUSTOM GRAPHICS
- SPECIFIC TO EAST NEIGHBORHOOD
- PROJECT COORDINATION AND REVIEW

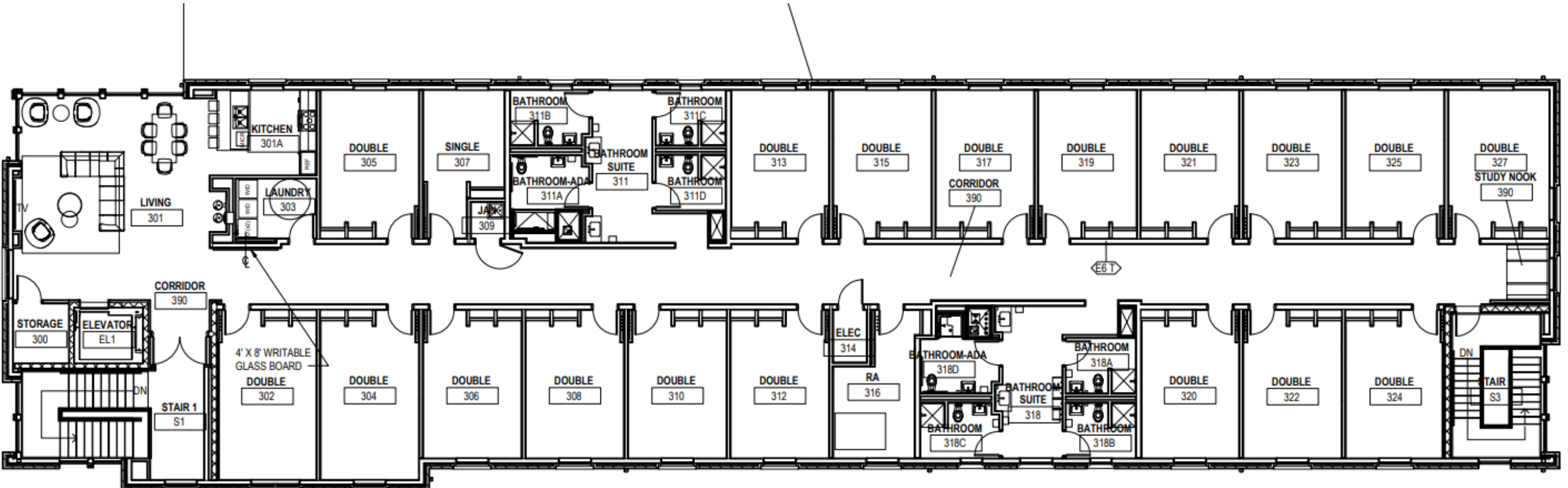
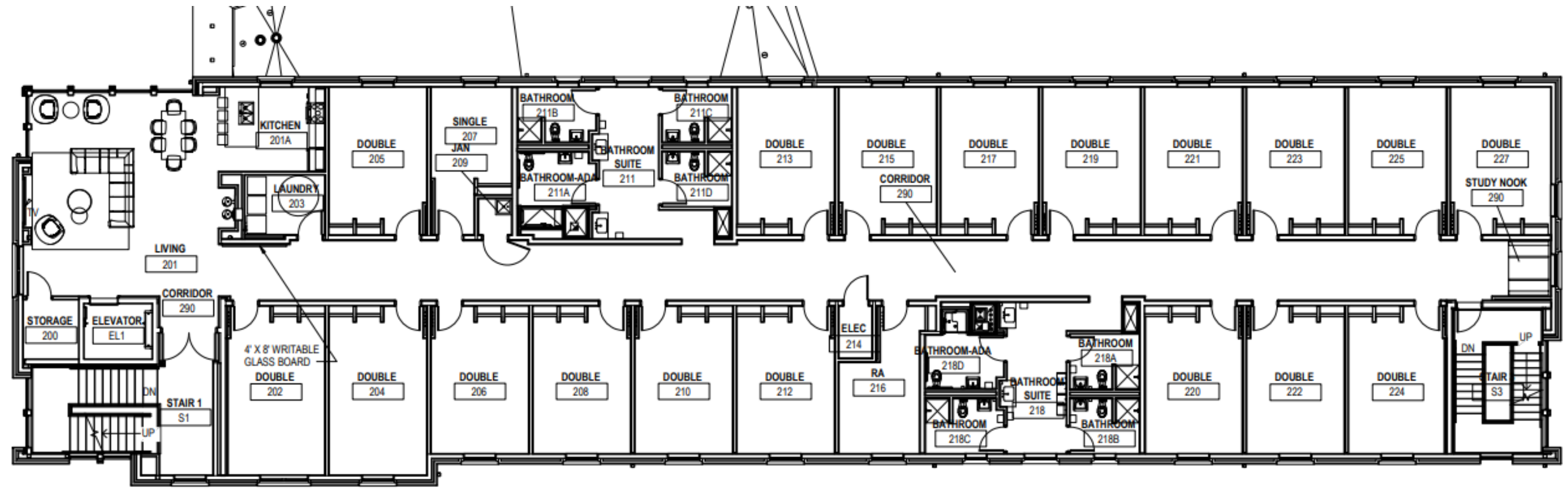
delete tasks not applicable

AFTER



East Neighborhood Commons

AFTER



East Campus Commons