

STUDENT LIFE & ACADEMICS OVER 20,000 SQ.FT.

DESIGNER: Jamie Boynton
EMAIL: jamieboynton@creighton.edu
PHONE NUMBER: 402-510-1966
SCHOOL: Creighton University

I HAVE RECEIVED PERMISSION FROM THE ARCHITECT FOR
USE OF PHOTOS OF THEIR WORK TO BE DISPLAYED ON THE
AUID WEBSITE: YES

THIS PAGE WILL NOT BE SHARED WITH THE JUDGES, PLEASE
DO NOT INCLUDE ANY FLOOR PLANS OR PHOTOS ON THIS
PAGE.

IN ORDER TO PRESERVE ANONYMITY WITH THE JUDGES,
THE IDENTITY OF YOUR NAME/INSTITUTION SHOULD NOT BE
IN YOUR DESIGN INTENT STATEMENT OR IN PHOTOS (WHERE
POSSIBLE).

PLEASE EMAIL POWER POINT ENTRY DOCUMENT TO AUID
DESIGN COMPETITION EMAIL:

info@auid.org

STUDENT LIFE & ACADEMICS OVER 20,000 SQ.FT.

PROJECT TITLE: Jérôme Nadal, SJ, Jesuit Residence

SQUARE FOOTAGE: 37,779 SF

PROJECT BUDGET: \$25,000,000

DID YOU WORK WITH AN OUTSIDE FIRM OR CONSULTANT? IF YES, LIST COMPANY NAME: Yes, Holland Basham Architects

PROJECT DESCRIPTION:

This building provides a new home for University Jesuits residents and functions as a space for students, faculty, staff, alumni, and partners from Omaha to engage in Mass, receive spiritual support, and participate in tutoring and mentoring programs. It features 28 bedrooms for the Jesuits, along with a chapel, dining hall, library, and various areas for spiritual activities.

The architectural design draws inspiration from mid-century and art deco styles, characterized by clean lines and a rich interior aesthetic. The furniture and finishes reflect the university's colors, incorporating classic patterns, solid hues, and leather materials. Walnut and brass elements enhance the mid-century modern look, emphasizing a strong, masculine ambiance.

The project faced obstacles due to budget limitations, starting with an initial allocation of \$1 million for furniture, fixtures, and equipment, which was later reduced to \$670,000. The addition of artwork further strained the budget. Ongoing design changes after initial approvals, combined with leadership efforts, ensured that the building opened on schedule, allowing Jesuit residents to move in and subsequently start renovations on their previous living spaces.



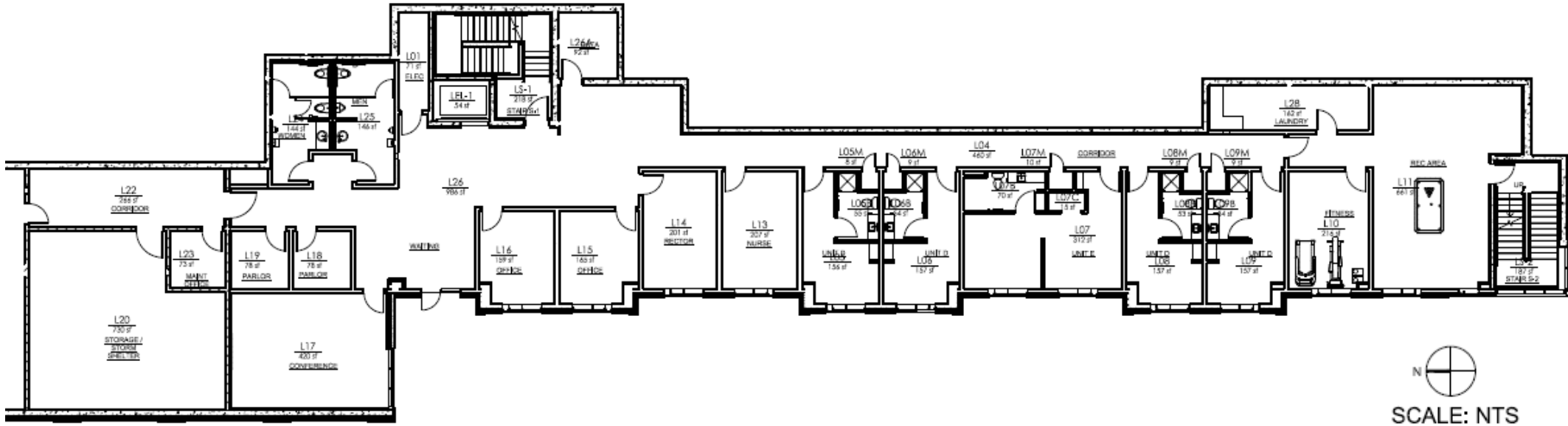
Jesuit Residence



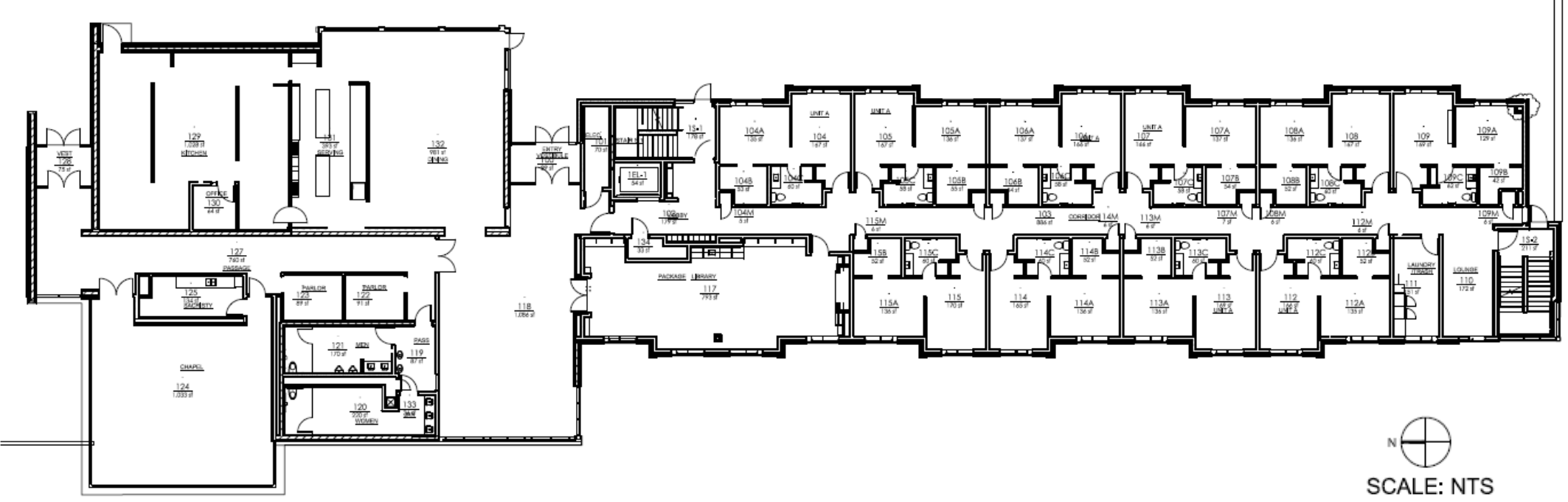
Jesuit Residence

PORTION OF PROJECT DESIGNER IS RESPONSIBLE FOR:

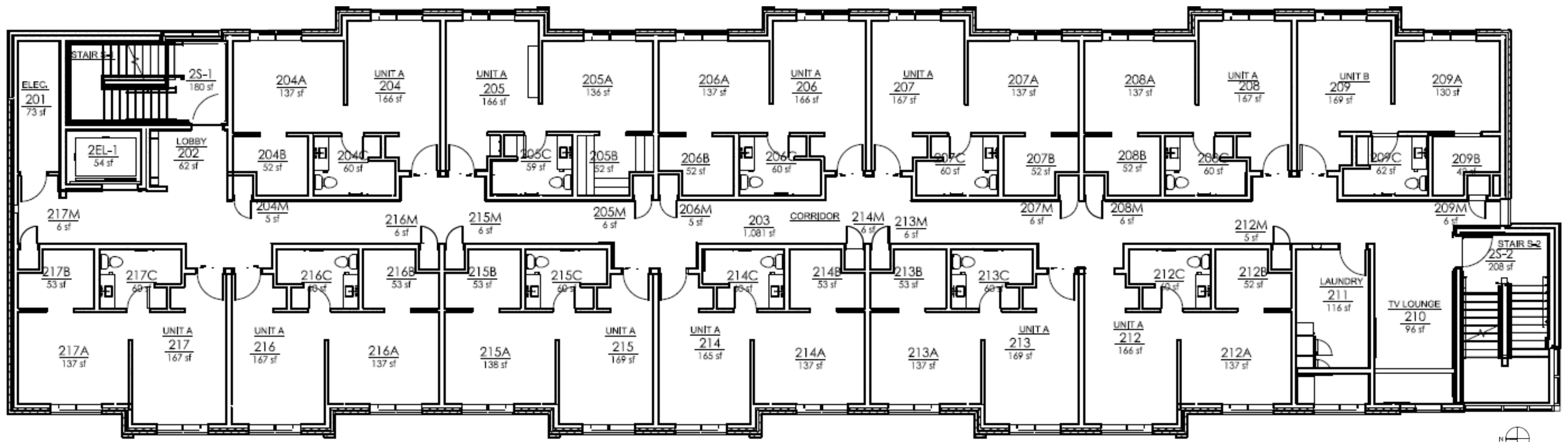
- BUDGET PREPARTION
- BUDGET MANAGEMENT
- SPACE PLANNING FURNITURE LAYOUT
- FURNITURE SPECIFICATION
- FINISH SPECIFICATION
- WINDOW TREATMENT SPECIFICATION
- GENERAL LIGHTING SPECIFICATION
- SPECIALTY SIGNAGE
- SPECIALTIES:
 - CUSTOM ARTWORK SELECTION AND COORDINATION
 - PROJECT COORDINATION AND REVIEW



LOWER LEVEL

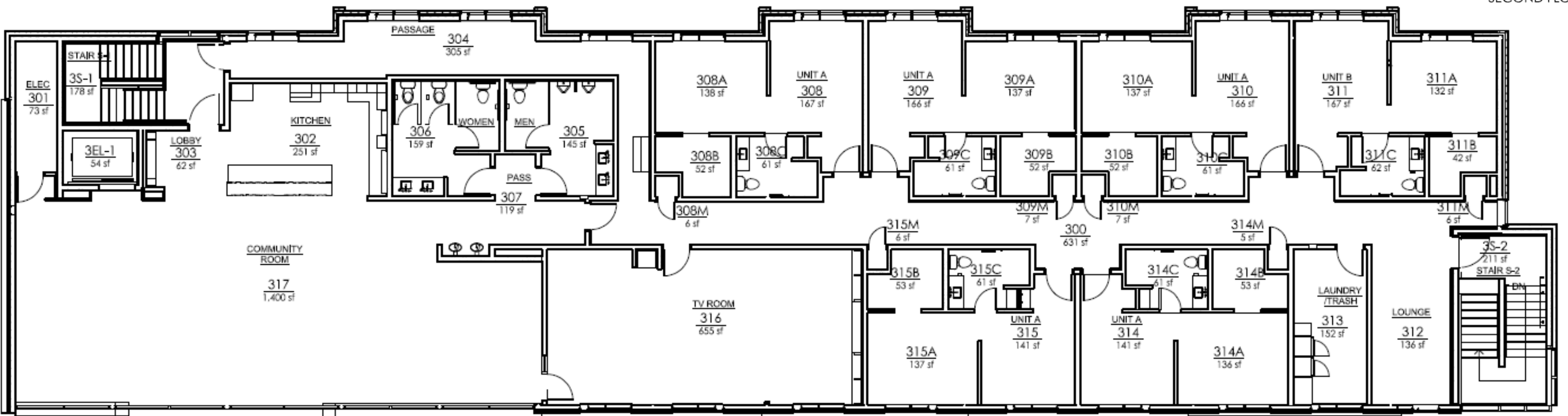


FIRST FLOOR



N
SCALE: NTS

SECOND FLOOR



N
SCALE: NTS

THIRD FLOOR