

STUDENT LIFE & ACADEMICS 5,000-20,000 SQ.FT.

DESIGNER: HOLLY HODGE & JENNY GONZALEZ

EMAIL: hhodge@elon.edu

PHONE NUMBER: 336.675.9084

SCHOOL: ELON UNIVERSITY

I HAVE RECEIVED PERMISSION FROM THE ARCHITECT FOR
USE OF PHOTOS OF THEIR WORK TO BE DISPLAYED ON THE
AUID WEBSITE: yes

THIS PAGE WILL NOT BE SHARED WITH THE JUDGES, PLEASE
DO NOT INCLUDE ANY FLOOR PLANS OR PHOTOS ON THIS
PAGE.

IN ORDER TO PRESERVE ANONYMITY WITH THE JUDGES,
THE IDENTITY OF YOUR NAME/INSTITUTION SHOULD NOT BE
IN YOUR DESIGN INTENT STATEMENT OR IN PHOTOS (WHERE
POSSIBLE).

PLEASE EMAIL POWER POINT ENTRY DOCUMENT TO AUID
DESIGN COMPETITION EMAIL:

info@avid.org

STUDENT LIFE & ACADEMICS 5,000-20,000 SQ.FT.

PROJECT TITLE: CHARLOTTE REGIONAL CENTER

SQUARE FOOTAGE: 14,000 SF

PROJECT BUDGET: \$1.3 million

DID YOU WORK WITH AN OUTSIDE FIRM OR CONSULTANT? IF

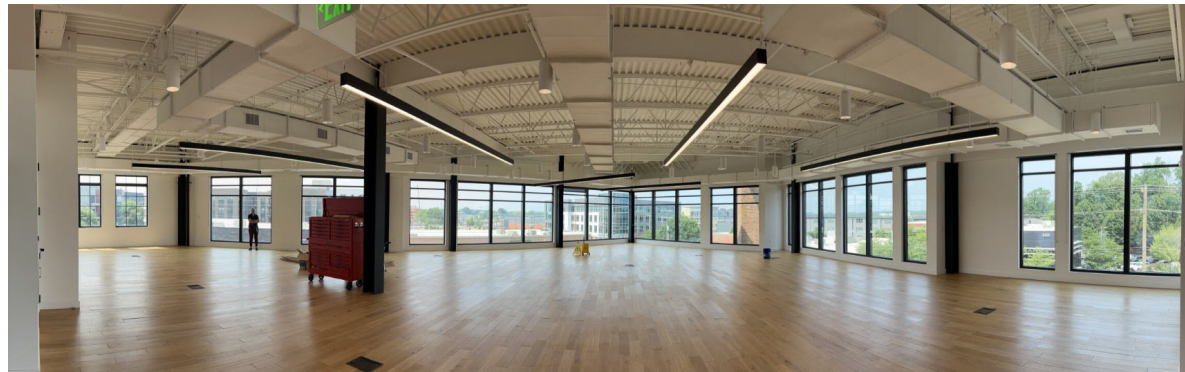
YES, LIST COMPANY NAME: (Y/N) YES-REDLINE DESIGN GROUP

PROJECT DESCRIPTION:

The Regional Center in Charlotte includes nearly 14,000 square feet of classroom and collaboration space, including commons areas and breakout spaces, in addition to faculty and staff offices. The university selected South End as its entry point to Charlotte because of the neighborhood's unique and compelling intersection of arts, culture and business, its walkable landscape and easy access to public transportation, all of which will give students a holistic city experience.

The previous tenant's space was a good foundation with warm neutrals, wood floors and expansive storefront. We modified the existing plan to accommodate the new program, adding classrooms, a small law library, meeting spaces, and additional offices. New classrooms are partitioned with interior glass which extends the natural light and views of uptown and the surrounding neighborhood to the interior common areas of the building. We extended the warm neutral finishes and made it uniquely the university with accents of university colors, custom graphics and branding. The previous tenant left behind some furniture pieces still in good shape, which we incorporated into lounge and office areas. This was an aggressively paced renovation, and the schedule drove many of the new furniture selections. An additional challenge was creating a space to be used by many distinct university groups—the law school, health sciences, study USA for internships, and university advancement. Future phases will add additional space for these groups on other floors.

BEFORE



AFTER



Charlotte Regional Center

AFTER



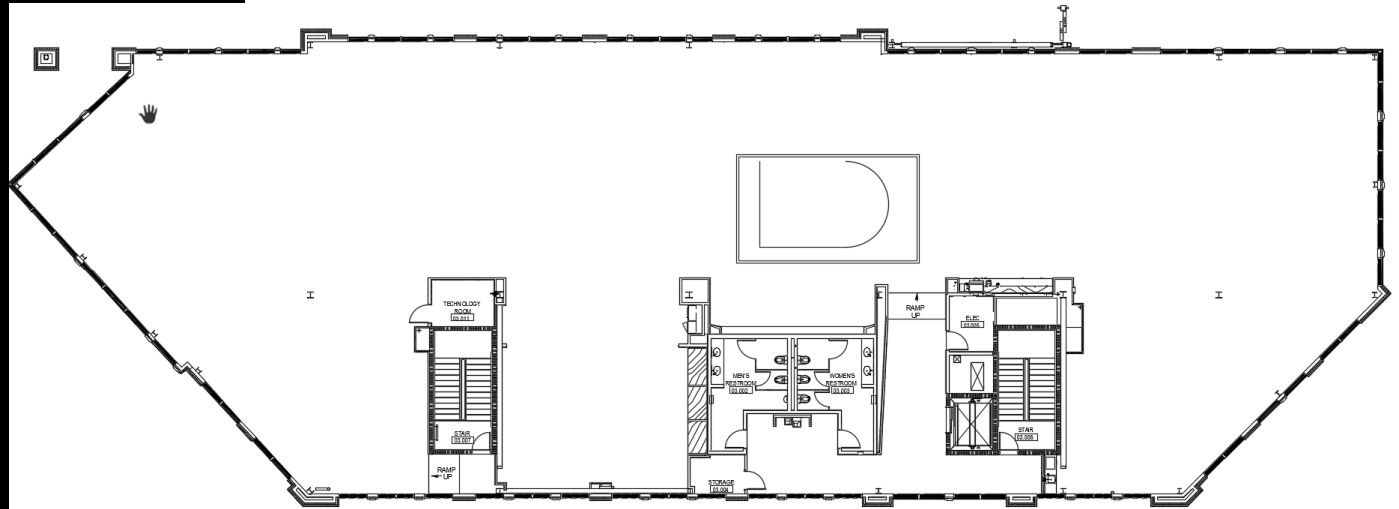
Charlotte Regional Center

PORTION OF PROJECT DESIGNER IS RESPONSIBLE FOR:

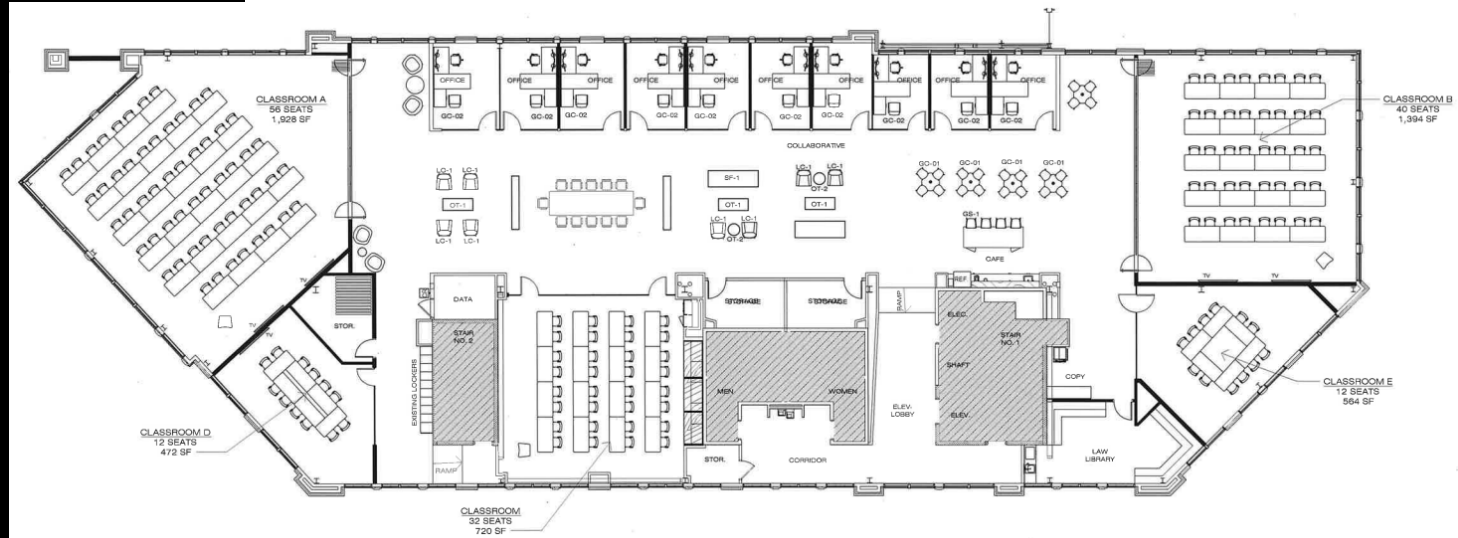
- BUDGET PREPARATION
- BUDGET MANAGEMENT
- SPACE PLANNING FURNITURE LAYOUT
- FURNITURE SPECIFICATION
- FINISH SPECIFICATION
- WALL TREATMENT
- GENERAL SIGNAGE
- SPECIALTY SIGNAGE
- SPECIALTIES: CUSTOM DETAILS: CUSTOM WINDOW
- PRIVACY FILM FOR OFFICES AND CUSTOM SIGNAGE
- PROJECT COORDINATION AND REVIEW

delete tasks not applicable

BEFORE



AFTER



Charlotte Regional Center