

STUDENT LIFE & ACADEMICS UNDER 5,000 SQ.FT.

DESIGNER: JENNY GONZALEZ
EMAIL: jgonzalez10@elon.edu
PHONE NUMBER: 336.266.3906
SCHOOL: ELON UNIVERSITY

I HAVE RECEIVED PERMISSION FROM THE ARCHITECT FOR
USE OF PHOTOS OF THEIR WORK TO BE DISPLAYED ON THE
AUID WEBSITE: (YES/NO) YES

THIS PAGE WILL NOT BE SHARED WITH THE JUDGES, PLEASE
DO NOT INCLUDE ANY FLOOR PLANS OR PHOTOS ON THIS
PAGE.

IN ORDER TO PRESERVE ANONYMITY WITH THE JUDGES,
THE IDENTITY OF YOUR NAME/INSTITUTION SHOULD NOT BE
IN YOUR DESIGN INTENT STATEMENT OR IN PHOTOS (WHERE
POSSIBLE).

PLEASE EMAIL POWER POINT ENTRY DOCUMENT TO AUID
DESIGN COMPETITION EMAIL:

info@auid.org

STUDENT LIFE & ACADEMICS

UNDER 5,000 SQ.FT.

PROJECT TITLE: EcoVillage at Loy Farm
SQUARE FOOTAGE: HOUSE SIZE VARIES (500-600 SF PER HOUSE) +/-3500 SF TOTAL
PROJECT BUDGET: \$2.45 M
DID YOU WORK WITH AN OUTSIDE FIRM OR CONSULTANT? IF YES, LIST COMPANY NAME: YES, STITCH DESIGN SHOP; HAVEN DESIGN BUILD; THE RALEIGH ARCHITECTURE COMPANY; HEIRLOOM BUILDERS

PROJECT DESCRIPTION:

EcoVillage is a new sustainable living-learning community at Loy Farm, with students applying what they learn in the classroom to tending the farm and living out sustainable principles while learning and embracing sustainable practices.

The first phase includes 6 sustainably designed small 2-bedroom homes, each exploring different sustainable methods and materials. Each house was designed by a different architect with a unique approach to sustainability. The first house was designed and constructed by a faculty member and students as part of a class (not included in the project submission). The Raleigh house is designed for low embodied and operational carbon. Knoll is integrated into the landscape with a living roof. Stitch house is a small two-story home for a limited site impact, with water collection for landscape use. The Perch house is an elevated wood "treehouse" with solar panels. Heirloom's house highlights multiple water management strategies.

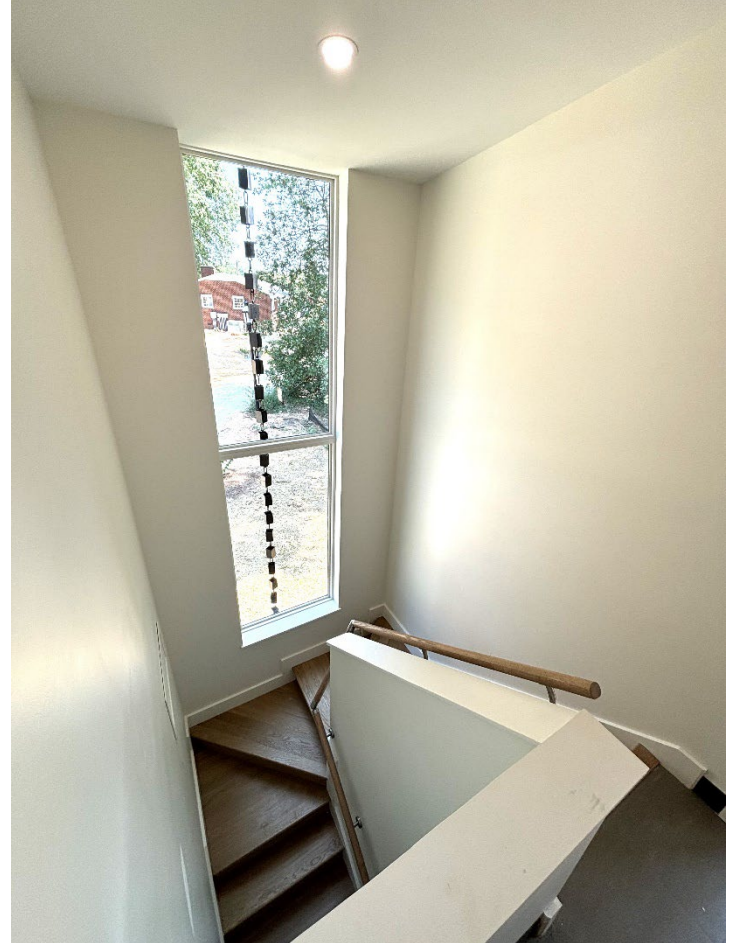
The finish selections were influenced by the architects' sustainable approach to their house and vary depending on the house. The interior finishes are environmentally-friendly, with long term durability for student living. These include climate positive linoleum flooring, high-recycled content tile, recycled glass countertops, and high recycled content laminate casework. Interior furnishings feature replaceable and recyclable parts and slipcovers to extend life and minimize disposal to landfill.

AFTER



EcoVillage at Loy Farm

AFTER



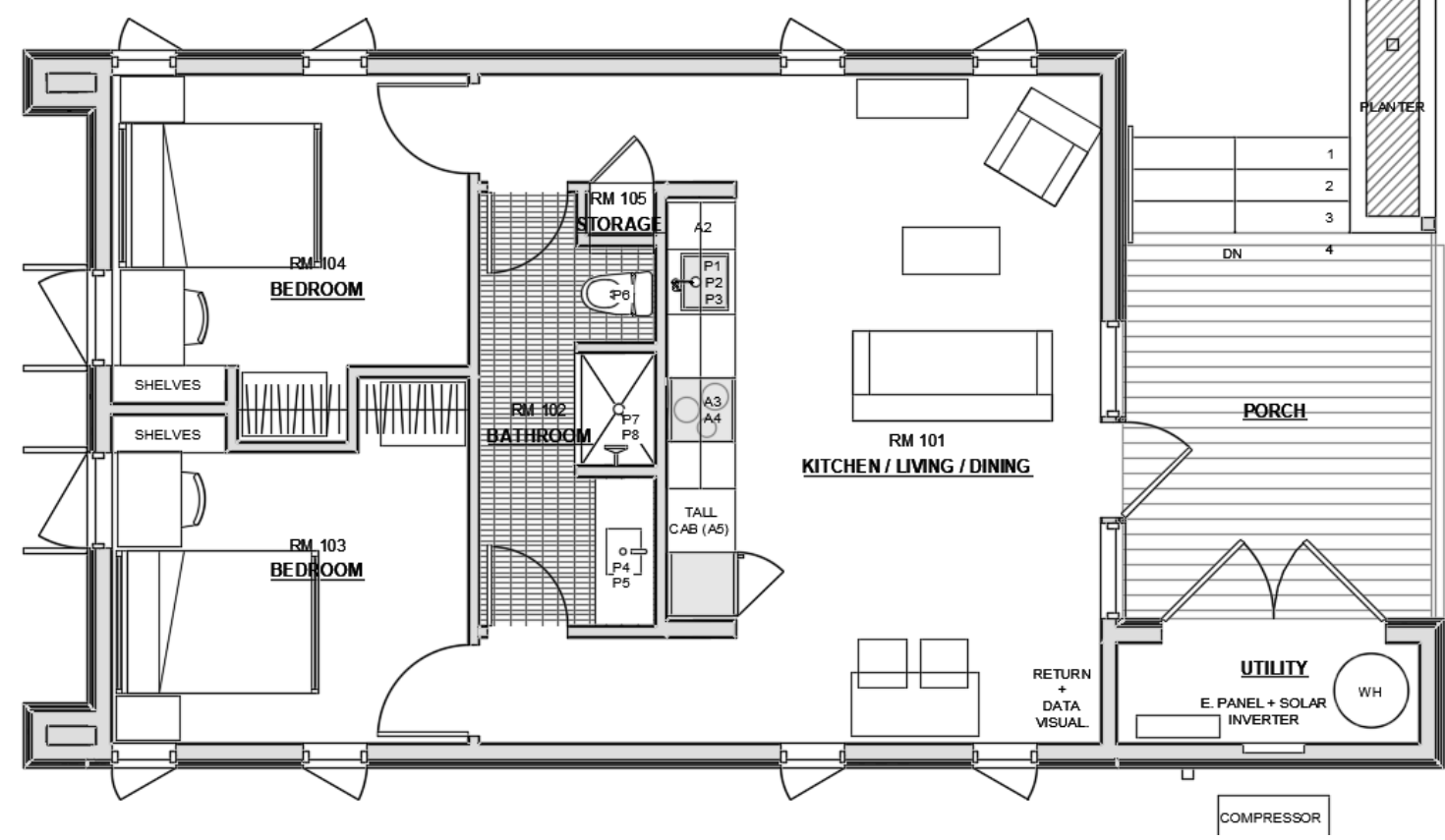
EcoVillage at Loy Farm

PORTION OF PROJECT DESIGNER IS RESPONSIBLE FOR:

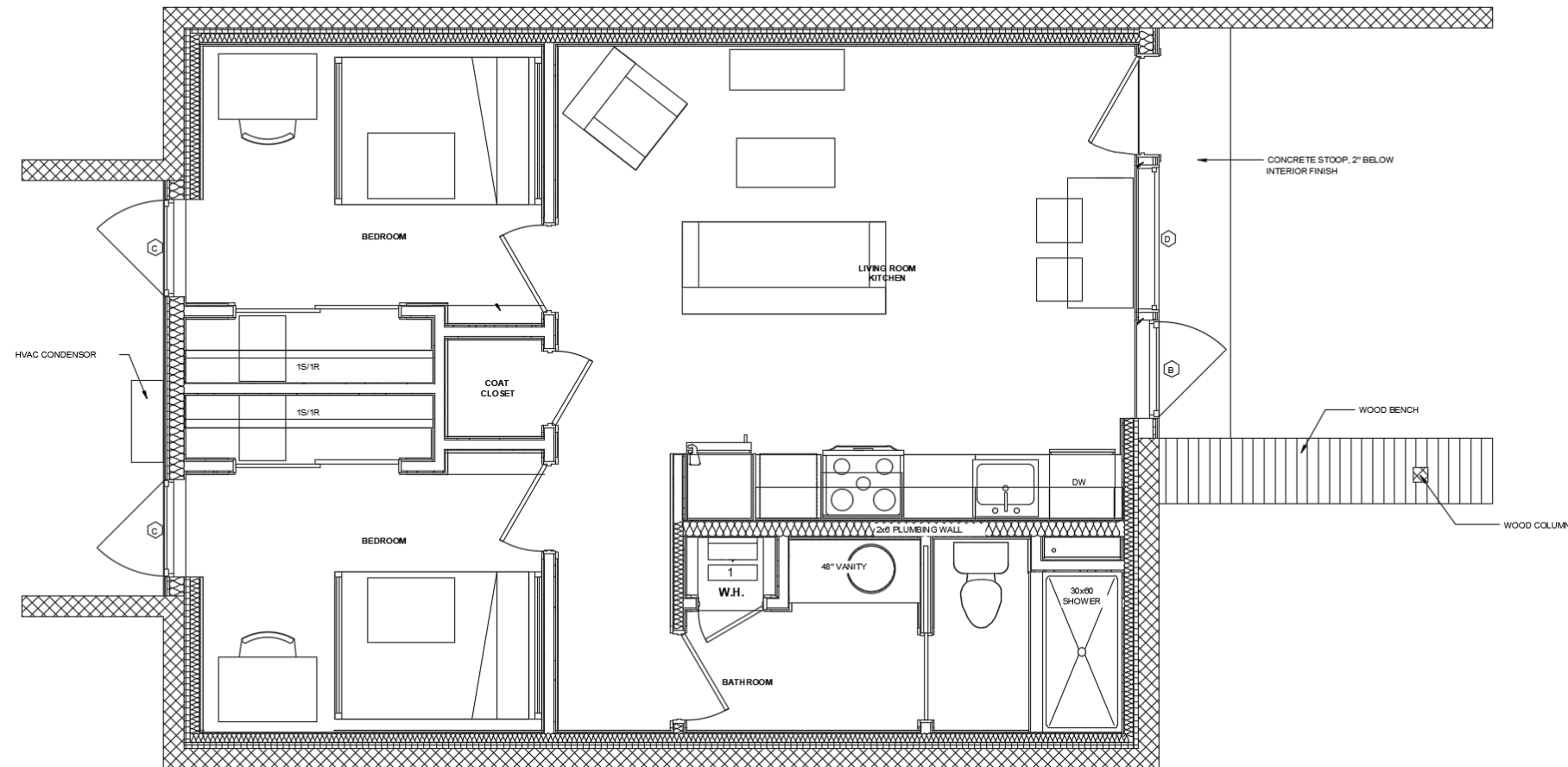
- SPACE PLANNING FURNITURE LAYOUT
- FURNITURE SPECIFICATION
- FINISH SPECIFICATION
- WINDOW TREATMENT SPECIFICATION
- WALL TREATMENT
- GENERAL SIGNAGE
- PROJECT COORDINATION AND REVIEW

delete tasks not applicable

AFTER: (4 of 6 house plans shown)



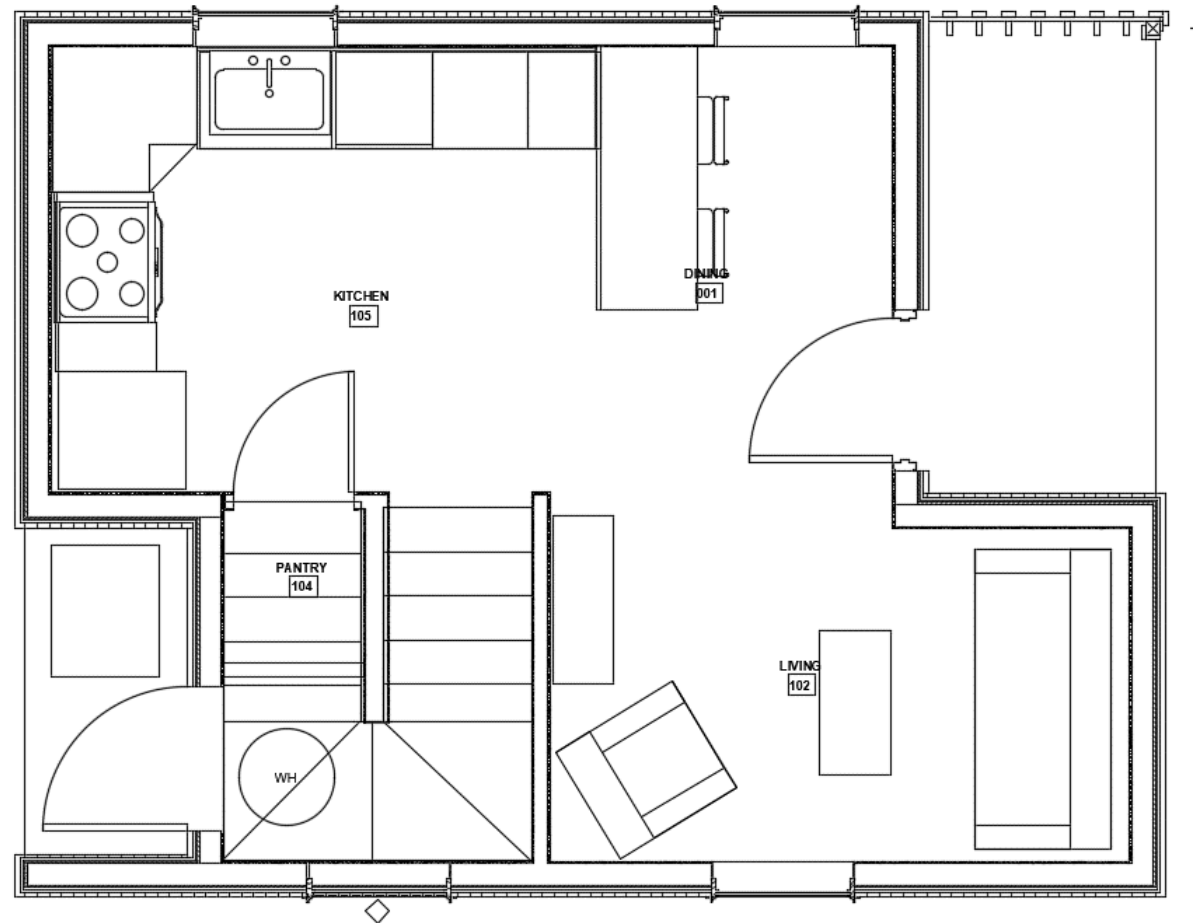
Raleigh House



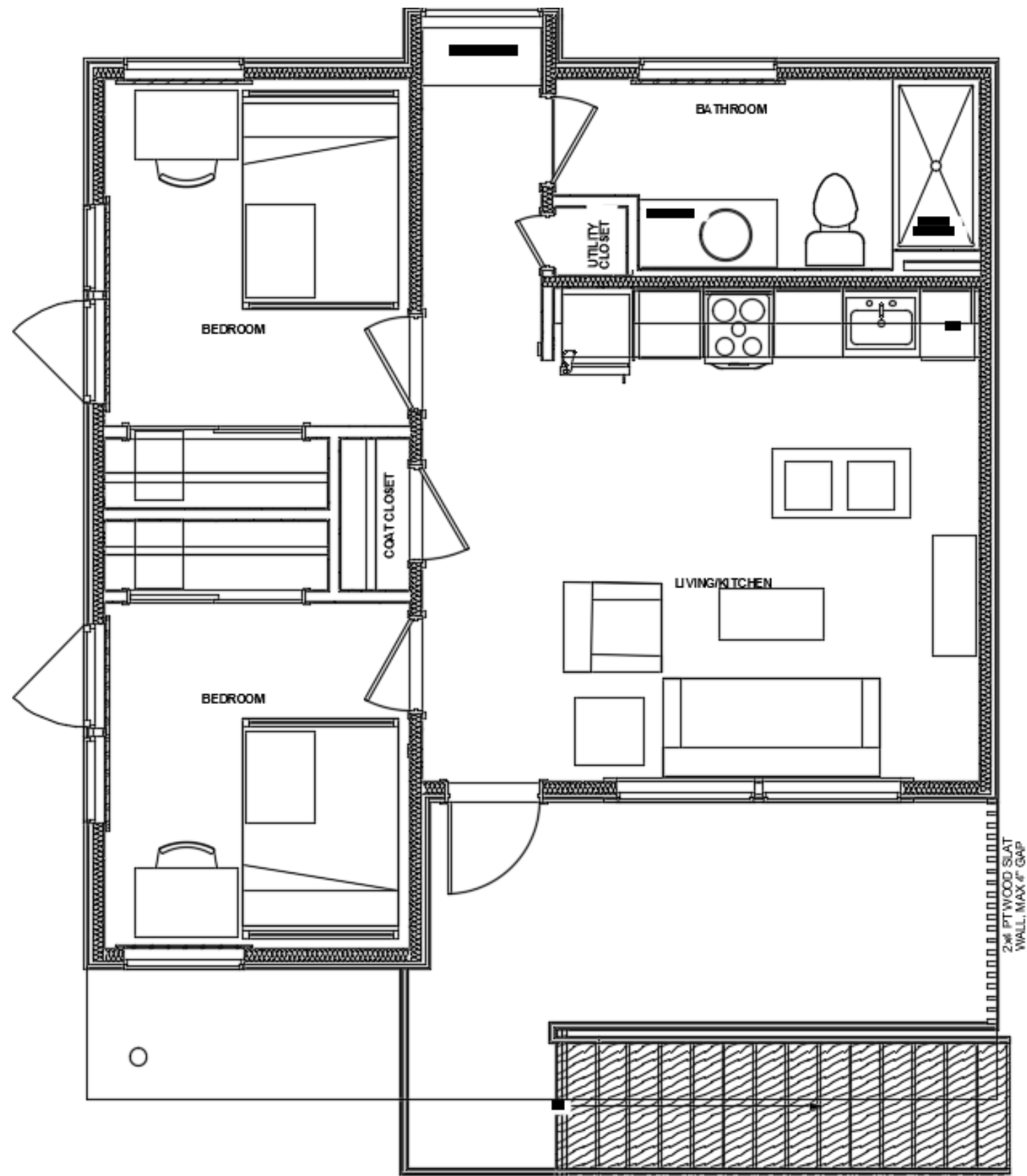
Knoll House

EcoVillage at Loy Farm

AFTER



Stitch House



Perch House